

ChangedOct 20, 2024 15:48

ReviewedOct 20, 2024 15:48

Erudus IDc1c196cb65e14f9086659fdb86159345

Version1.0

14394

Dalston's Pineapple Soda 330ml can

Pineapple Soda 24x

PRODUCT DESCRIPTION

Real Pressed Pineapple & sparkling water

Brand	Dalston's Soda
Manufacturer Product Code	CDPAS009-24
Product Type	Drink
Product Category	Carbonated & Soft Drinks
Storage Type	Ambient
Erudus ID	c1c196cb65e14f9086659fdb86159345
Specification Type	Drinks



Inner Component GTIN	5060494810689
Outer Case GTIN	15060494810686



INGREDIENTS

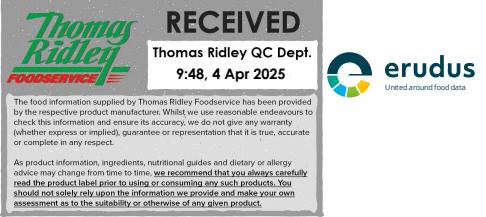
Ingredient Declaration

Sparkling Water, Pineapple Juice From Concentrate (16%), White Grape Juice From Concentrate, Natural Flavourings

ALLERGENS

<i>Product Contains:</i>	
Celery/Celeriac	No
Cereals Containing Gluten	No
Barley	No
Oats	No
Rye	No
Wheat (including Spelt and Khorasan)	No
Crustacea	No
Eggs	No
Fish	No
Lupin	No
Milk	No
Molluscs	No
Mustard	No
Nuts (Tree)	No
Almond nuts	No
Brazil nuts	No
Cashew nuts	No
Hazelnuts	No
Macadamia (Queensland) nuts	No
Pecan nuts	No
Pistachio nuts	No
Walnuts	No
Peanuts	No
Sesame Seeds	No
Soybeans	No
Sulphur Dioxide and Sulphites	No
Palm Oil	No
Hydrogenated Vegetable Oil/Fat	No
GM Protein/DNA	No

SUPPLEMENTARY INGREDIENT INFORMATION



ADDITIVES

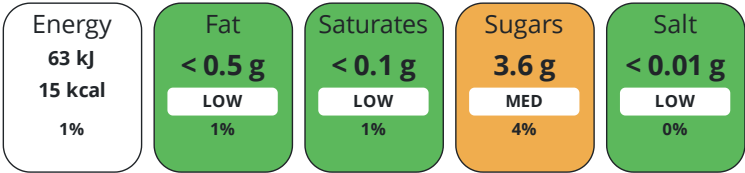
Product Contains:

Artificial Antioxidants	No	Artificial Flavourings	No
Artificial Colours	No	Artificial Preservatives	No
Artificial Flavour Enhancers	No	Artificial Sweeteners	No
Vegan Diet	Suitable for	Vegetarian Diet	Suitable for
Halal Diet	No	Kosher Diet	No

DIET
SUITABILITY

NUTRITIONAL
INFORMATION

Each 100g/ml portion contains:



of your reference intake.

Typical values per 100g/ml : Energy 15kcal / 63kJ

Nutrient	per 100ml	RI per 100ml
Energy (kJ)	63 kJ	1%
Energy (kcal)	15 kcal	1%
Fat	< 0.5 g	1%
of which Saturates	< 0.1 g	1%
Carbohydrate	3.7 g	1%
of which Sugars	3.6 g	4%
Protein	< 0.5 g	1%
Salt	< 0.01 g	0%

SUPPLEMENTARY
NUTRITIONAL
INFORMATION

HANDLING &
STORAGE
INFORMATION

Directions For Use

Drink within 24 hours of opening. Best served chilled.

Storage Instructions

Ambient product. Store in a cool dry place.

Shelf Life from Time of Production	360 Days
Shelf Life From Opening	1 Days

B Corp Certification	BRCGS Certified
Sedex	

ACCREDITATIONS/
CERTIFICATIONS/
ASSURANCE
SCHEMES
ORIGIN

Product Country of Origin	United Kingdom
Additional Origin Details	Manufactured in Somerset, England Primary ingredient sourced from Costa Rica
Origin of the Primary Ingredient	

PRODUCT
CHARACTERISTICS

Standards Testing			
Do you undertake trend analysis of microbiological results?	No	Is shelf life testing undertaken?	No

CONFIGURATION

Case Configuration	Inner Pack Configuration
Total Quantity of Inner Components in Outer Case	24 Units

PRODUCT WEIGHTS	Inner Component						
	Outer Case						
	Outer Case Gross Weight		8.84 kg				
	Outer Case Net Weight		8.84 kg				
PRODUCT DIMENSIONS	Inner Component						
	Inner Component Depth		67 mm				
	Inner Component Width		67 mm				
	Inner Component Height		116 mm				
PALLET INFORMATION	Outer Case						
	Outer Case Depth		404 mm				
	Outer Case Width		272 mm				
	Outer Case Height		118 mm				
	Quantity of Cases Per Pallet Layer		10 Cases		Pallet Type		UK Standard Pallet
	Quantity of Layers Per Pallet		12 Layers		Pallet Height		1.56 MTR
PACKAGING	Quantity of Cases Per Pallet		120 Cases		Pallet Gross Weight		1110 kg
	Inner Component Packaging						
	Type	Materials	Weight	Recycled Plastic %	Recyclable	Returnable	Composite
	Can	Aluminium	17 g	- %			
	Outer Case Packaging						
	Type	Materials	Weight	Recycled Plastic %	Recyclable	Returnable	Composite
	Case	Plastic	5 g	- %			
	Case	Paper/Cardboard	46 g	- %			
MARKETING INFORMATION	Marketing Description						
	49 Kcal - No Added Sugar - No Artificial Sweeteners - Healthy Alternative - Low Calorie - Vegan - Gluten Free						
OTHER INFORMATION							
CONTACT INFORMATION	Address						
	Dalston's Soda 18 Ashwin Street London Borough of Hackney London E8 3DL United Kingdom						
	P: (Phone) 07745661434						

The information on the [Erudus System](#) has been supplied by the manufacturers of the products and, whilst the owners of the Erudus System take steps to ensure the information is regularly updated, they give no warranty and no guarantee that the information is accurate. Product information and ingredients may change, please always read product labels carefully in addition to using the information provided by Erudus.

We do not accept liability for any inaccuracies or incorrect information contained on this site.
Please visit <http://www.erudus.com/terms-and-conditions> for full terms and conditions.