

Cadbury Dairy Milk Freddo 18g



EAN  
96049945

Target market(s)  
GB, IE

Components

Ingredients

Milk\*\*

Sugar

Cocoa Butter

Cocoa Mass

Vegetable Fats (Palm, Shea)

Emulsifiers (E442, E476)

Flavourings

\*\*The equivalent of 426 ml of Fresh Liquid Milk in every 227 g of Milk Chocolate

Milk Solids 20 % minimum, actual 23 %

Cocoa Solids 20 % minimum

Contains Vegetable Fats in addition to Cocoa Butter

Nutrient Profile Score

Nutrient Profile Score UK - 25

Allergy Text


May contain Nuts, Wheat.

Nutrition

	Per 100 g:	Per Bar (18 g):	%* / Per Bar (18 g):
Energy	2210 kJ (530 kcal)	398 kJ (95 kcal)	5 %
Fat	30.5 g	5.5 g	8 %
of which Saturates	18.5 g	3.3 g	17 %
Carbohydrate	56.5 g	10 g	
of which Sugars	56 g	10 g	11 %
Fibre	0.7 g	0.1 g	
Protein	7.5 g	1.4 g	
Salt	0.23 g	0.04 g	1 %
*Reference intake of an average adult (8400 kJ / 2000 kcal)			

Calculated Nutrition

	per 100g	Per Bar (18 g):
Energy (kJ)	2210	398
Energy (kcal)	530	95



RECEIVED

Thomas Ridley QC Dept.

11:42, 7 Apr 2025

The food information supplied by Thomas Ridley Foodservice has been provided by the respective product manufacturers. Whilst we use reasonable endeavours to check this information and ensure its accuracy, we do not give any warranty (whether express or implied), guarantee or representation that it is true, accurate or complete in any respect.

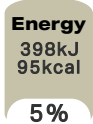
As product information, ingredients, nutritional guides and dietary or allergy advice may change from time to time, we recommend that you always carefully read the product label prior to using or consuming any such products. You should not solely rely upon the information we provide and make your own assessment as to the suitability or otherwise of any given product.

Fat (g)	30.5	5.5
of which saturates (g)	18.5	3.3
Carbohydrate (g)	56.5	10
of which sugars (g)	56	10
Fibre (g)	0.7	0.1
Protein (g)	7.5	1.4
Salt (g)	0.23	0.04

Front of Pack Nutrition

Per Portion

1x Bar = 1 Portion



Reference intake of an average adult (8400 kJ / 2000 kcal)

Reference Intake Statement

Reference Intake Statement - Reference intake of an average adult (8400 kJ / 2000 kcal)

HFSS Indicator

HFSS Indicator - HFSS

HFSS Food or Drink

HFSS Food or Drink - Food

HFSS Food Category

HFSS Food Category - 4 - Confectionary inc. chocolate and sweets

Product Description

Brand

Cadbury

Features

95 Calories Per Bar  
Suitable for vegetarians

Standardised Brand

Brand - Cadbury

Regulated Product Name

Milk chocolate

## Marketing

### Company Name

Mondelez UK / Mondelez Ireland

### Company Address

Mondelez UK,  
PO Box 7008,  
Birmingham,  
B30 2PT.

Mondelez Ireland,  
Malahide Road,  
Coolock,  
Dublin 5.

### Third Party Logos

- Tidyman

### Manufacturer Marketing

By Appointment to H.M. The Queen Cocoa and Chocolate Manufacturers Cadbury UK Ltd., Bournville.

### Other Information

Made under licence from Cadbury UK Ltd.

### Further Description

BeTreatwise.net

Cocoa Life

## Health & Lifestyle

### Lifestyle

- Suitable for Vegetarians

### Allergy Advice

Milk - Contains  
Nuts - May Contain  
Wheat - May Contain

## Storage & Usage

### Storage Type

#### Type

Ambient

### Storage

Store in a dry place. Protect from heat.

## Brandbank Captured Pack Data

### Pack Size

0.04lbs e

### Numeric Size

Numeric Size - 0.04

### Pack Type

Type - Wrap

### Usage Count

Number of uses - Servings

1

### Usage Other Text

1x Bar = 1 Portion

## Customer Services

### Manufacturers Address

Mondelez UK,  
PO Box 7008,  
Birmingham,  
B30 2PT.

Mondelez Ireland,  
Malahide Road,  
Coolock,  
Dublin 5.

### Return To

We are passionate about our great quality Cadbury products. Not completely satisfied? Please contact us:  
Freephone 0800 818181 (UK only).

Mondelez UK,  
PO Box 7008,  
Birmingham,  
B30 2PT.

Mondelez Ireland,  
Freephone 1-800 678708  
Malahide Road,  
Coolock,  
Dublin 5.  
[www.cadbury.co.uk](http://www.cadbury.co.uk)

### Telephone Helpline

0800 818181 (UK)  
1-800 678708

### Web Address

[www.cadbury.co.uk](http://www.cadbury.co.uk)

