

PIZZA TONDA ROMANA 12" (29cm) - 50 units per case

Pizza Tonda Romana 12" (Cm) 50x230g

PRODUCT DESCRIPTION

Frozen Pre Cooked Pizza Base For Adding Toppings - Hand Made

Brand	Passione Pizza
Manufacturer Product Code	PTR12UK
Product Type	Food
Product Category	Pizza & Pizza Bases
Storage Type	Frozen
Erudus ID	d64e650117e44084a091ca81a528571c
Specification Type	Bakery Products

Outer Case GTIN

08050628540350



INGREDIENTS

Ingredient Declaration

INGREDIENTS: Type "0" soft WHEAT flour, SOYBEAN flour (GMO free), durum WHEAT semolina, water, rice flour, sourdough starter 5% (Type "00" WHEAT flour, water, starter cultures), salt, sunflower oil, sourdough (WHEAT flour, water, yeast), natural flavourings.

ALLERGENS

Product Contains:

Celery/Celeriac	No
Cereals Containing Gluten	Yes
Barley	No
Oats	No
Rye	No
Wheat (including Spelt and Khorasan)	Yes
Crustacea	No
Eggs	No
Fish	No
Lupin	No
Milk	No
Molluscs	No

Mustard	No
Nuts (Tree)	No
Almond nuts	No
Brazil nuts	No
Cashew nuts	No
Hazelnuts	No
Macadamia (Queensland) nuts	No
Pecan nuts	No
Pistachio nuts	No
Walnuts	No
Peanuts	No
Sesame Seeds	No
Soybeans	Yes
Sulphur Dioxide and Sulphites	No

SUPPLEMENTARY INGREDIENT INFORMATION

Palm Oil	No
Hydrogenated Vegetable Oil/Fat	No
GM Protein/DNA	No

ADDITIVES

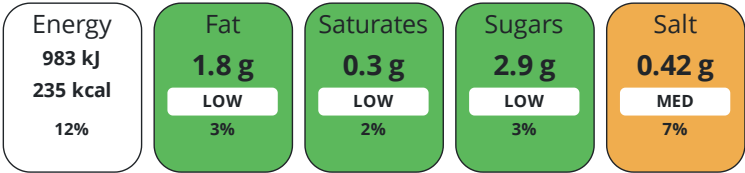
DIET
SUITABILITY

NUTRITIONAL
INFORMATION

Product Contains:

Artificial Antioxidants	No	Artificial Flavourings	No
Artificial Colours	No	Artificial Preservatives	No
Artificial Flavour Enhancers	No	Artificial Sweeteners	No
Vegan Diet	Suitable for	Vegetarian Diet	Suitable for
Halal Diet	Suitable for	Kosher Diet	No

Each 100g/ml portion contains:



of your reference intake.

Typical values per 100g/ml : Energy 235kcal / 983kJ

Nutrient	per 100g	RI per 100g
Energy (kJ)	983 kJ	12%
Energy (kcal)	235 kcal	12%
Fat	1.8 g	3%
of which Saturates	0.3 g	2%
Carbohydrate	45 g	17%
of which Sugars	2.9 g	3%
Protein	9.8 g	20%
Salt	0.42 g	7%

SUPPLEMENTARY
NUTRITIONAL
INFORMATION

HFSS (HIGH IN
FAT, SALT AND
SUGAR)
HANDLING &
STORAGE
INFORMATION

HFSS Status	No
-------------	----

Directions For Use

To be consumed cooked: Defrost the product at room temperature for maximum one hour. Topping to taste and bake in a preheated oven at 300/ 320 °C (572/608 °F), for about 3 minutes; or in ventilated oven at 250 ° C (482 ° F), for about 5 minutes.

Storage Instructions

Store at -18°C/ -22°C (0° F/ -7.6 ° F) Once the product has been defrosted, it cannot be refrozen, Keep refrigerated and use within 24 hours.

Shelf Life from Time of Production	540 Days
------------------------------------	----------

FSSC 22000

ACCREDITATIONS/
CERTIFICATIONS/
ASSURANCE
SCHEMES
ORIGIN

Product Country of Origin	Italy
---------------------------	-------

Additional Origin Details

Hand Made and Packaged : Pizza Art / Intra Food SRL, Via della Magliana, 884, CAP 00148 ROMA - Italy Exclusive UK Import: PASSIONE PIZZA LTD

Origin of the Primary Ingredient

PRODUCT
CHARACTERISTICS

Standards Testing

CONFIGURATION	Do you undertake trend analysis of microbiological results?			Is shelf life testing undertaken?			
	Case Configuration			Inner Pack Configuration			
	Total Quantity of Inner Components in Outer Case			50 Units			
PRODUCT WEIGHTS	Inner Component						
	Variable Weight Consumer Item			No			
	Inner Component Weight			230 g			
	Outer Case						
	Outer Case Gross Weight			11.12 kg			
	Outer Case Net Weight			11.1 kg			
PRODUCT DIMENSIONS	Inner Component						
	Inner Component Depth			300 mm			
	Inner Component Width			300 mm			
	Inner Component Height			50 mm			
	Outer Case						
	Outer Case Depth			300 mm			
	Outer Case Width			600 mm			
	Outer Case Height			200 mm			
	PALLET INFORMATION	Quantity of Cases Per Pallet Layer			Pallet Type		UK Standard Pallet
Quantity of Layers Per Pallet			Pallet Height		1.81 MTR		
Quantity of Cases Per Pallet			48 Cases				
PACKAGING	Inner Component Packaging						
	Type	Materials	Weight	Recycled Plastic %	Recyclable	Returnable	Composite
	Heat Sealed	Plastic	0.1 g	- %			
	Outer Case Packaging						
	Type	Materials	Weight	Recycled Plastic %	Recyclable	Returnable	Composite
	Case	Paper/Cardboard	200 g	- %			
OTHER INFORMATION	Intrastat/Taric Code			19059080			
	Manufacturer Comments						
	Orders are per full pallet of product (non mixed) Lead time TBA Forecast required to ensure smooth supply						

CONTACT
INFORMATION

Address

Passione Pizza
8 St John street
London
London
EC1M 4AY
United Kingdom

P: (Phone) 07929463377

Commercial Contact

Paul Cancellari
Director of Sales
paul@passionepizza.co.uk

P: (Phone) 07522996371

The information on the [Erudus System](#) has been supplied by the manufacturers of the products and, whilst the owners of the Erudus System take steps to ensure the information is regularly updated, they give no warranty and no guarantee that the information is accurate. Product information and ingredients may change, please always read product labels carefully in addition to using the information provided by Erudus.

We do not accept liability for any inaccuracies or incorrect information contained on this site.
Please visit <http://www.erudus.com/terms-and-conditions> for full terms and conditions.