

14419

LEE KUM KEE CHILLI GARLIC PASTE 6X1.05KG

Chilli Garlic Paste 6x1050g

PRODUCT DESCRIPTION

A medium hot concentrated chilli paste made from a careful blend of salted chillies and minced garlic to create a unique ingredient paste.

Brand	LEE KUM KEE
Manufacturer Product Code	619159 / 1300080424
Product Type	Food
Product Category	Sauces & Dips
Storage Type	Ambient
Erudus ID	e8802152fa52481baedb5ffd9d3e83e0
Specification Type	Generic
Inner Component GTIN	078895123210
Outer Case GTIN	20078895123214



INGREDIENTS

Ingredient Declaration
Salted Chilli Peppers 60% (Chilli Peppers 80%, Salt), Sugar, Water, Rice Vinegar, Dehydrated Garlic 4%, Salt, Corn Starch.

ALLERGENS

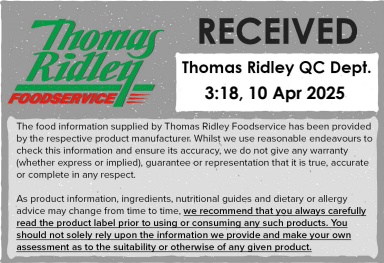
Product Contains:

Celery/Celeriac	No
Cereals Containing Gluten	No
Barley	No
Oats	No
Rye	No
Wheat (including Spelt and Khorasan)	No
Crustacea	No
Eggs	No
Fish	No
Lupin	No
Milk	No
Molluscs	No

Mustard	No
Nuts (Tree)	No
Almond nuts	No
Brazil nuts	No
Cashew nuts	No
Hazelnuts	No
Macadamia (Queensland) nuts	No
Pecan nuts	No
Pistachio nuts	No
Walnuts	No
Peanuts	No
Sesame Seeds	No
Soybeans	No
Sulphur Dioxide and Sulphites	No

SUPPLEMENTARY INGREDIENT INFORMATION

Palm Oil	No
Hydrogenated Vegetable Oil/Fat	No
GM Protein/DNA	No



ADDITIVES

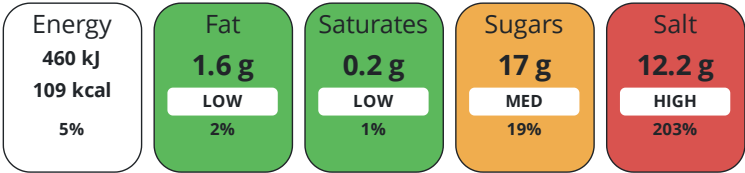
Product Contains:

Artificial Antioxidants	No	Artificial Flavourings	No
Artificial Colours	No	Artificial Preservatives	No
Artificial Flavour Enhancers	No	Artificial Sweeteners	No
Vegan Diet	Suitable for	Vegetarian Diet	Suitable for
Halal Diet	No	Kosher Diet	No

DIET
SUITABILITY

NUTRITIONAL
INFORMATION

Each 100g/ml portion contains:



of your reference intake.

Typical values per 100g/ml : Energy 109kcal / 460kJ

Nutrient	per 100g	RI per 100g
Energy (kJ)	460 kJ	5%
Energy (kcal)	109 kcal	5%
Fat	1.6 g	2%
of which Saturates	0.2 g	1%
Carbohydrate	20 g	8%
of which Sugars	17 g	19%
Protein	1.8 g	4%
Salt	12.2 g	203%

SUPPLEMENTARY
NUTRITIONAL
INFORMATION

HANDLING &
STORAGE
INFORMATION

Directions For Use

READY TO USE

Storage Instructions

STORE IN COOL DRY PLACE. REFRIGERATE AFTER OPENING AND USE WITHIN 8 WEEKS & BEFORE EXPIRY DATE. FOR BEST BEFORE SEE NECK OF BOTTLE.

Shelf Life from Time of Production	456 Days
------------------------------------	----------

ORIGIN

Product Country of Origin	China
Origin of the Primary Ingredient	

PRODUCT
CHARACTERISTICS
CONFIGURATION

Standards Testing	
Case Configuration	Inner Pack Configuration
Total Quantity of Inner Components in Outer Case	6 Units

PRODUCT WEIGHTS

Inner Component	
Variable Weight Consumer Item	No
Inner Component Weight	1050 g
Outer Case	
Outer Case Gross Weight	7.4 kg
Outer Case Net Weight	6.3 kg

PRODUCT DIMENSIONS

Inner Component	
Inner Component Depth	94 mm
Inner Component Width	94 mm
Inner Component Height	170 mm
Outer Case	
Outer Case Depth	290 mm
Outer Case Width	200 mm
Outer Case Height	180 mm

PALLET INFORMATION

Quantity of Cases Per Pallet Layer	20 Cases	Pallet Height	1.08 MTR
Quantity of Layers Per Pallet	6 Layers	Pallet Gross Weight	925 kg
Quantity of Cases Per Pallet	120 Cases		

PACKAGING

Inner Component Packaging						
Type	Materials	Weight	Recycled Plastic %	Recyclable	Returnable	Composite
Bottle	Paper/Cardboard	2 g	- %	Yes		
Bottle	Plastic	101 g	- %	Yes		
Outer Case Packaging						
Type	Materials	Weight	Recycled Plastic %	Recyclable	Returnable	Composite
Box	Paper/Cardboard	232 g	- %			
Transport Packaging						
Type	Materials	Weight	Recycled Plastic %	Recyclable	Returnable	Composite
Other	Wood	35000 g	- %			
Other	Plastic	2000 g	- %			

OTHER INFORMATION
CONTACT INFORMATION

Commodity Code	2103909089	
Address		Technical Contact
Petty Wood & Co		Helen Syme-Nicholson
Livingstone Road		QA Manager
Andover		hsnicholson@pettywood.com
SP10 5NS		
United Kingdom		P: (Phone) 01264345546
P: (Phone) 01264 345500		
Complaints Contact		
Sophia Twigg		
QA Assistant		
stwiggg@pettywood.co.uk		
P: (Phone) 0126434580		

The information on the [Erudus System](#) has been supplied by the manufacturers of the products and, whilst the owners of the Erudus System take steps to ensure the information is regularly updated, they give no warranty and no guarantee that the information is accurate. Product information and ingredients may change, please always read product labels carefully in addition to using the information provided by Erudus.

We do not accept liability for any inaccuracies or incorrect information contained on this site.
Please visit <http://www.erudus.com/terms-and-conditions> for full terms and conditions.