

14440

# Frozen Cooked Caramelised Onion & Goats Cheese Quiche 11"

Frozen Cooked Caramelised Onion & Goats Cheese Quiche 11" 1x2kg

## PRODUCT DESCRIPTION

Frozen Cooked Caramelised Onion & Goats Cheese Quiche 11"

|                           |                                  |
|---------------------------|----------------------------------|
| Brand                     | Tailormade Newhaven Ltd          |
| Manufacturer Product Code | 1664F                            |
| Product Type              | Food                             |
| Product Category          | Pies, Sausage Rolls, Savouries   |
| Storage Type              | Chilled                          |
| Erudus ID                 | 676024101b2c4dd880720394ce33c80a |
| Specification Type        | Bakery Products                  |

Outer Case GTIN5060296372477



## INGREDIENTS

### Ingredient Declaration

EGG Mix 50% (Water, free Range EGG, MILK powder (MILK protein)), garlic puree (hydrated fresh garlic (98%)), preservative (citric acid), salt, pepper, potato starch, Caramelised Onion 20% (onion, red wine vinegar, sugar), Cheddar cheese (MILK), anti-caking agent (Potato starch), Flour 17% (WHEAT Flour), Absorbic Acid, Goats Cheese 9% (MILK), Shortening (Palm Oil, Rapeseed Oil), Onion 5%, water, mixed herbs

## ALLERGENS

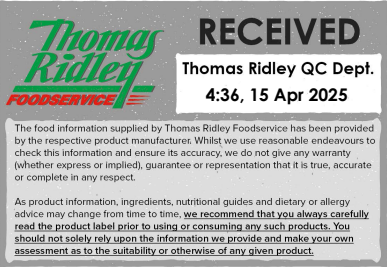
Product Contains:

|                                      |     |
|--------------------------------------|-----|
| Celery/Celeriac                      | No  |
| Cereals Containing Gluten            | Yes |
| Barley                               | No  |
| Oats                                 | No  |
| Rye                                  | No  |
| Wheat (including Spelt and Khorasan) | Yes |
| Crustacea                            | No  |
| Eggs                                 | Yes |
| Fish                                 | No  |
| Lupin                                | No  |
| Milk                                 | Yes |
| Molluscs                             | No  |

|                               |    |
|-------------------------------|----|
| Mustard                       | No |
| Nuts (Tree)                   | No |
| Almond nuts                   | No |
| Brazil nuts                   | No |
| Cashew nuts                   | No |
| Hazelnuts                     | No |
| Macadamia (Queensland) nuts   | No |
| Pecan nuts                    | No |
| Pistachio nuts                | No |
| Walnuts                       | No |
| Peanuts                       | No |
| Sesame Seeds                  | No |
| Soybeans                      | No |
| Sulphur Dioxide and Sulphites | No |

## SUPPLEMENTARY INGREDIENT INFORMATION

|                                |     |
|--------------------------------|-----|
| Palm Oil                       | Yes |
| Hydrogenated Vegetable Oil/Fat | No  |
| GM Protein/DNA                 | No  |



ADDITIVES

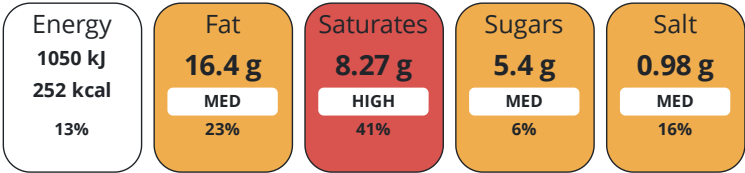
Product Contains:

|                              |    |                          |     |
|------------------------------|----|--------------------------|-----|
| Artificial Antioxidants      | No | Artificial Flavourings   | No  |
| Artificial Colours           | No | Artificial Preservatives | Yes |
| Artificial Flavour Enhancers | No | Artificial Sweeteners    | No  |
| Vegan Diet                   | No | Vegetarian Diet          | No  |
| Halal Diet                   | No | Kosher Diet              | No  |

DIET  
SUITABILITY

NUTRITIONAL  
INFORMATION

Each 100g/ml portion contains:



of your reference intake.

Typical values per 100g/ml : Energy 252kcal / 1050kJ

| Nutrient           | per 100g | RI per 100g |
|--------------------|----------|-------------|
| Energy (kJ)        | 1050 kJ  | 13%         |
| Energy (kcal)      | 252 kcal | 13%         |
| Fat                | 16.4 g   | 23%         |
| of which Saturates | 8.27 g   | 41%         |
| Carbohydrate       | 17.9 g   | 7%          |
| of which Sugars    | 5.4 g    | 6%          |
| Protein            | 9.03 g   | 18%         |
| Salt               | 0.98 g   | 16%         |

SUPPLEMENTARY  
NUTRITIONAL  
INFORMATION

HANDLING &  
STORAGE  
INFORMATION

|  |  |
|--|--|
| Directions For Use                     | Frozen Quiche - Defrost Overnight - Best Serve Chilled |
| Storage Instructions                   | Frozen Quiche - Store at -18°C                         |
| Shelf Life from Time of Production     | 365 Days   |
| SALSA (Safe & Local Supplier Approval) |  |

ACCREDITATIONS/  
CERTIFICATIONS/  
ASSURANCE  
SCHEMES  
ORIGIN

|                                  |                |
|----------------------------------|----------------|
| Product Country of Origin        | United Kingdom |
| Origin of the Primary Ingredient |                |

PRODUCT  
CHARACTERISTICS

|   |    |                                   |    |
|---|----|-----------------------------------|----|
| Standards Testing   |    |                                   |    |
| Do you undertake trend analysis of microbiological results? | No | Is shelf life testing undertaken? | No |

CONFIGURATION

|  |                          |
|--|--------------------------|
| Case Configuration                               | Inner Pack Configuration |
| Total Quantity of Inner Components in Outer Case | 1 Units                  |

|                                       |                                    |                 |               |                    |            |            |           |
|---------------------------------------|------------------------------------|-----------------|---------------|--------------------|------------|------------|-----------|
| PRODUCT WEIGHTS                       | Inner Component                    |                 |               |                    |            |            |           |
|                                       | Variable Weight Consumer Item      | No              |               |                    |            |            |           |
|                                       | Inner Component Weight             | 2 kg            |               |                    |            |            |           |
|                                       | Net Drained Weight                 | 1.92 kg         |               |                    |            |            |           |
|                                       | Outer Case                         |                 |               |                    |            |            |           |
|                                       | Outer Case Gross Weight            | 2.05 kg         |               |                    |            |            |           |
| PRODUCT DIMENSIONS                    | Outer Case Net Weight              |                 | 1.92 kg       |                    |            |            |           |
|                                       | Inner Component                    |                 |               |                    |            |            |           |
|                                       | Inner Component Depth              | 0 mm            |               |                    |            |            |           |
|                                       | Inner Component Width              | 310 mm          |               |                    |            |            |           |
|                                       | Inner Component Height             | 40 mm           |               |                    |            |            |           |
|                                       | Outer Case                         |                 |               |                    |            |            |           |
| PALLET INFORMATION                    | Outer Case Depth                   | 315 mm          |               |                    |            |            |           |
|                                       | Outer Case Width                   | 315 mm          |               |                    |            |            |           |
|                                       | Outer Case Height                  | 75 mm           |               |                    |            |            |           |
|                                       | Quantity of Cases Per Pallet Layer | 9 Cases         | Pallet Height | 0 MTR              |            |            |           |
|                                       | Quantity of Layers Per Pallet      | 11 Layers       |               |                    |            |            |           |
|                                       | Quantity of Cases Per Pallet       | 99 Cases        |               |                    |            |            |           |
| PACKAGING                             | Outer Case Packaging               |                 |               |                    |            |            |           |
|                                       | Type                               | Materials       | Weight        | Recycled Plastic % | Recyclable | Returnable | Composite |
|                                       | Case                               | Paper/Cardboard | 202.7 g       | - %                |            |            |           |
|                                       | Case                               | Aluminium       | 38.7 g        | - %                |            |            |           |
|                                       |                                    |                 |               |                    |            |            |           |
| OTHER INFORMATION CONTACT INFORMATION | Address                            |                 |               |                    |            |            |           |
|                                       | Tailormade Newhaven Ltd            |                 |               |                    |            |            |           |
|                                       | Unit 6 Pine Close                  |                 |               |                    |            |            |           |
|                                       | Newhaven                           |                 |               |                    |            |            |           |
|                                       | East Sussex                        |                 |               |                    |            |            |           |
|                                       | BN9 0EH                            |                 |               |                    |            |            |           |
|                                       | United Kingdom                     |                 |               |                    |            |            |           |
| P: (Phone) 01273517035                |                                    |                 |               |                    |            |            |           |

The information on the [Erudus System](#) has been supplied by the manufacturers of the products and, whilst the owners of the Erudus System take steps to ensure the information is regularly updated, they give no warranty and no guarantee that the information is accurate. Product information and ingredients may change, please always read product labels carefully in addition to using the information provided by Erudus.

We do not accept liability for any inaccuracies or incorrect information contained on this site.  
Please visit <http://www.erudus.com/terms-and-conditions> for full terms and conditions.