

14441

Frozen Cooked Quiche Lorraine 11"

Frozen Cooked Quiche Lorraine 11" 1x2kg

PRODUCT DESCRIPTION

Frozen Cooked Quiche Lorraine 11"

Brand	Tailormade Newhaven Ltd
Manufacturer Product Code	1601F
Product Type	Food
Product Category	Pies, Sausage Rolls, Savouries
Storage Type	Frozen
Erudus ID	4ba86ae0f80f4622bad8a0bd0d150b7c
Specification Type	Bakery Products
Outer Case GTIN	5060296372453



INGREDIENTS

Ingredient Declaration

EGG Mix 50% (Water, free Range EGG, MILK powder (MILK protein)), garlic puree (hydrated fresh garlic (98%)), preservative (citric acid), salt, pepper, potato starch, Bacon 18% (Pork, salt, Dextrose, Preservative Sodium nitrite, Potassium nitrate, Antioxidant Sodium ascorbate), Cheddar cheese (MILK), anti-caking agent (Potato starch), Flour 17%(WHEAT Flour), Absorbic Acid, Shortening (Palm Oil, Rapeseed Oil), Onion 5%, water, mixed herbs

ALLERGENS

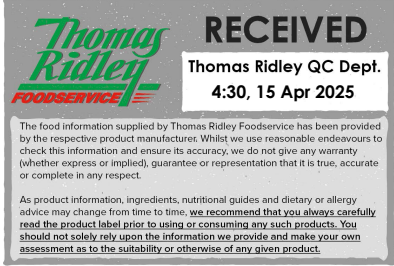
Product Contains:

Celery/Celeriac	No
Cereals Containing Gluten	Yes
Barley	No
Oats	No
Rye	No
Wheat (including Spelt and Khorasan)	Yes
Crustacea	No
Eggs	Yes
Fish	No
Lupin	No
Milk	Yes
Molluscs	No

Mustard	No
Nuts (Tree)	No
Almond nuts	No
Brazil nuts	No
Cashew nuts	No
Hazelnuts	No
Macadamia (Queensland) nuts	No
Pecan nuts	No
Pistachio nuts	No
Walnuts	No
Peanuts	No
Sesame Seeds	No
Soybeans	No
Sulphur Dioxide and Sulphites	No

SUPPLEMENTARY
INGREDIENT
INFORMATION

Palm Oil	Yes
Hydrogenated Vegetable Oil/Fat	No
GM Protein/DNA	No



ADDITIVES

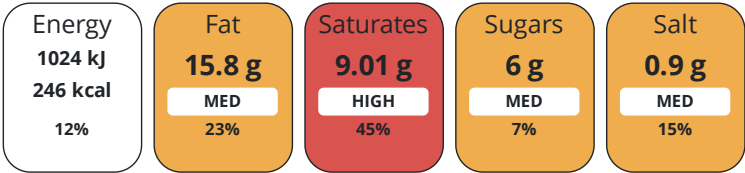
Product Contains:

Artificial Antioxidants	No	Artificial Flavourings	No
Artificial Colours	No	Artificial Preservatives	Yes
Artificial Flavour Enhancers	No	Artificial Sweeteners	No
Vegan Diet	No	Vegetarian Diet	No
Halal Diet	No	Kosher Diet	No

DIET
SUITABILITY

NUTRITIONAL
INFORMATION

Each 100g/ml portion contains:



of your reference intake.

Typical values per 100g/ml : Energy 246kcal / 1024kJ

Nutrient	per 100g	RI per 100g
Energy (kJ)	1024 kJ	12%
Energy (kcal)	246 kcal	12%
Fat	15.8 g	23%
of which Saturates	9.01 g	45%
Carbohydrate	21.2 g	8%
of which Sugars	6 g	7%
Protein	8.5 g	17%
Salt	0.9 g	15%

SUPPLEMENTARY
NUTRITIONAL
INFORMATION

HANDLING &
STORAGE
INFORMATION

Directions For Use	Defrost Overnight - Best Serve Chilled
Storage Instructions	Frozen Quiche - Store at -18°C
Shelf Life from Time of Production	365 Days
SALSA (Safe & Local Supplier Approval)	

ACCREDITATIONS/
CERTIFICATIONS/
ASSURANCE
SCHEMES
ORIGIN

Product Country of Origin	United Kingdom
Origin of the Primary Ingredient	

PRODUCT
CHARACTERISTICS

Standards Testing		
Do you undertake trend analysis of microbiological results?	No	Is shelf life testing undertaken? No

CONFIGURATION

Case Configuration	Inner Pack Configuration
Total Quantity of Inner Components in Outer Case	1 Units

PRODUCT WEIGHTS	Inner Component						
	Variable Weight Consumer Item	No					
	Inner Component Weight	2 kg					
	Net Drained Weight	1.92 kg					
	Outer Case						
	Outer Case Gross Weight	2.05 kg					
PRODUCT DIMENSIONS	Outer Case Net Weight		1.92 kg				
	Inner Component						
	Inner Component Depth	0 mm					
	Inner Component Width	310 mm					
	Inner Component Height	40 mm					
	Outer Case						
PALLET INFORMATION	Outer Case Depth	315 mm					
	Outer Case Width	315 mm					
	Outer Case Height	75 mm					
	Quantity of Cases Per Pallet Layer	9 Cases	Pallet Height	0 MTR			
	Quantity of Layers Per Pallet	11 Layers					
	Quantity of Cases Per Pallet	99 Cases					
PACKAGING	Outer Case Packaging						
	Type	Materials	Weight	Recycled Plastic %	Recyclable	Returnable	Composite
	Case	Paper/Cardboard	202.7 g	- %			
	Case	Aluminium	38.7 g	- %			
OTHER INFORMATION CONTACT INFORMATION	Address						
	Tailormade Newhaven Ltd						
	Unit 6 Pine Close						
	Newhaven						
	East Sussex						
	BN9 0EH						
	United Kingdom						
P: (Phone) 01273517035							

The information on the [Erudus System](#) has been supplied by the manufacturers of the products and, whilst the owners of the Erudus System take steps to ensure the information is regularly updated, they give no warranty and no guarantee that the information is accurate. Product information and ingredients may change, please always read product labels carefully in addition to using the information provided by Erudus.

We do not accept liability for any inaccuracies or incorrect information contained on this site.
Please visit <http://www.erudus.com/terms-and-conditions> for full terms and conditions.