

This specification is published by [Erudus](#) for Caterfood Buying Group

14456

Caterfood Select American Style Seasoned 2oz Beef Burger (90 x 56g)

Frozen Beef Burger With Seasonings And Onion 90x56g

PRODUCT DESCRIPTION

American Style Seasoned Beef Burger 56g

Brand	Caterfood Buying Group
Label Own Label Code	C20103
Product Type	Food
Product Category	Meatballs, Burgers & Sausages
Storage Type	Frozen
Erudus ID	e72e1d933289405780d2c8d351edb363
Specification Type	Meat
Outer Case GTIN	5056750402088



INGREDIENTS

Ingredient Declaration
Beef (80%), Water, Rusk (**WHEAT** Flour (**WHEAT** Flour, Calcium Carbonate, Iron, Niacin, Thiamin), Salt, Raising Agent: Ammonium Carbonates; Seasoning (Salt, Dextrose, Hydrolysed **SOYA** Protein, Preservative: Sodium **METABISULPHITE**; Natural Flavouring, Acidity Regulator: Citric Acid; Antioxidant: Sodium Ascorbate), **SOYA** Protein, Onion.

ALLERGENS

Product Contains:

Celery/Celeriac	No
Cereals Containing Gluten	Yes
Barley	No
Oats	No
Rye	No
Wheat (including Spelt and Khorasan)	Yes
Crustacea	No
Eggs	No
Fish	No
Lupin	No
Milk	No
Molluscs	No

Mustard	No
Nuts (Tree)	No
Almond nuts	No
Brazil nuts	No
Cashew nuts	No
Hazelnuts	No
Macadamia (Queensland) nuts	No
Pecan nuts	No
Pistachio nuts	No
Walnuts	No
Peanuts	No
Sesame Seeds	No
Soybeans	Yes
Sulphur Dioxide and Sulphites	Yes

Allergen Statement On Pack

For allergens, including cereals containing gluten, see ingredients in CAPITALS.

SUPPLEMENTARY
INGREDIENT
INFORMATION

Palm Oil	No
Hydrogenated Vegetable Oil/Fat	No
GM Protein/DNA	No

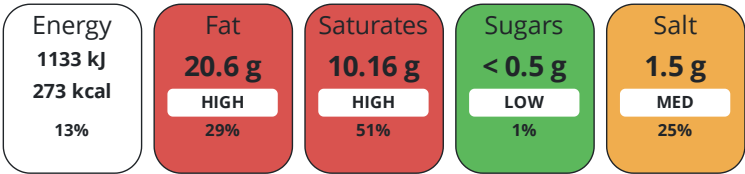
ADDITIVES

Product Contains:			
Artificial Antioxidants	Yes	Artificial Flavourings	No
Artificial Colours	No	Artificial Preservatives	Yes
Artificial Flavour Enhancers	No	Artificial Sweeteners	No
Halal Diet	No	Kosher Diet	No

DIET
SUITABILITY

NUTRITIONAL
INFORMATION

Each 100g/ml portion contains:



of your reference intake.

Typical values per 100g/ml : Energy 273kcal / 1133kJ

Nutrient	per 100g	RI per 100g	per 56g serving	RI per 56g serving
Energy (kJ)	1133 kJ	13%	634.5 kJ	8%
Energy (kcal)	273 kcal	14%	152.9 kcal	8%
Fat	20.6 g	29%	11.5 g	16%
of which Saturates	10.16 g	51%	5.7 g	29%
Carbohydrate	3.6 g	1%	2 g	1%
of which Sugars	< 0.5 g	1%	0.3 g	0%
Fibre	< 0.5 g		0.3 g	
Protein	18.2 g	36%	10.2 g	20%
Salt	1.5 g	25%	0.8 g	13%
Sodium	600 mg		336 mg	

Serving Size	56 g
--------------	------

SUPPLEMENTARY
NUTRITIONAL
INFORMATION

HANDLING &
STORAGE
INFORMATION

Directions For Use	
For best results chargrill or griddle from frozen. Turn occasionally until no pink colour remains and all juices run clear. This is a raw product and must be cooked to a minimum core temperature of 75°C for 30 seconds.	
Storage Instructions	
Store at -18°C or below. Once defrosted, do not refreeze and use within 48 hours.	
Shelf Life from Time of Production	365 Days

ACCREDITATIONS/
CERTIFICATIONS/
ASSURANCE
SCHEMES
ORIGIN

BRCGS Certified	BRCGS Food Safety
Product Country of Origin	United Kingdom
Additional Origin Details	
Made with beef from UK and non-UK countries.	
Origin of the Primary Ingredient	Belgium, France, Great Britain, Ireland, Italy, Netherlands (the), Poland

PRODUCT CHARACTERISTICS

Standards Testing					
Do you undertake trend analysis of microbiological results?		Yes	Is shelf life testing undertaken?		Yes
			Commercially Sterile		No
Microbiological Standards					
Organism	Description	Frequency	Target	Maximum	Sample (g or ml)
E. Coli (cfu/g or ml)		Every Batch	<10	50	56
Enterobacteriaceae (cfu/g or ml)		Every Batch	<100	10000	56
Salmonella (cfu/g or ml)		Every Batch	<0	0	56
Aerobic Colony Count (ACC) (cfu/g or ml)		Every Batch	<10000	1000000	56
Coagulase-positive Staphylococci (cfu/g or ml)		Every Batch	<20	100	56

ORGANOLEPTICS

Appearance
Burgers should be well formed, slightly oval in shape with a well blended appearance. Burgers should be rose pink at production, aging to typical brownish/light grey during storage.
Aroma
Good beef & seasoning aroma
Taste
Seasoned beefy flavour
Texture
Slight resistance to bite. Medium meaty texture

HAZARD CONTROLS

CONFIGURATION	Metal Detection	Yes		
	Case Configuration		Inner Pack Configuration	
	Total Quantity of Inner Components in Outer Case	90 Units	Count per Inner Component	90
	Is the Outer Case Splittable?	No		
PRODUCT WEIGHTS	Inner Component			
	Variable Weight Consumer Item	No		
	Inner Component Weight	56 g		
	Outer Case			
	Outer Case Gross Weight	5.37 kg		
	Outer Case Net Weight	5.16 kg		
PRODUCT DIMENSIONS	Inner Component			
	Inner Component Depth	396 mm		
	Inner Component Width	302 mm		
	Inner Component Height	85 mm		
	Outer Case			
	Outer Case Depth	396 mm		
	Outer Case Width	302 mm		
	Outer Case Height	80 mm		
PALLET INFORMATION	Quantity of Cases Per Pallet Layer	10 Cases	Pallet Height	1.6 MTR
	Quantity of Layers Per Pallet	17 Layers	Pallet Gross Weight	913 kg
	Quantity of Cases Per Pallet	170 Cases		

PACKAGING

Inner Component Packaging

Type	Materials	Weight	Recycled Plastic %	Recyclable	Returnable	Composite
Bag	Plastic	25 g	- %			
Parchment Paper	Paper/Cardboard	90 g	- %			

Outer Case Packaging

Type	Materials	Weight	Recycled Plastic %	Recyclable	Returnable	Composite
Tape	Plastic	4 g	- %			
Case	Paper/Cardboard	212 g	- %			

Transport Packaging

Type	Materials	Weight	Recycled Plastic %	Recyclable	Returnable	Composite
Pallet Wrap	Plastic	200 g	- %			
Pallet	Wood	28000 g	- %			

OTHER
INFORMATION
CONTACT
INFORMATION

Identification/Health Marks	GB DK019
-----------------------------	----------

ADDRESS

Caterfood Buying Group
BFS Group Ltd
814 Leigh Road
Slough
Berkshire
SL1 4BD
United Kingdom

The information on the [Erudus System](#) has been supplied by the manufacturers of the products and, whilst the owners of the Erudus System take steps to ensure the information is regularly updated, they give no warranty and no guarantee that the information is accurate. Product information and ingredients may change, please always read product labels carefully in addition to using the information provided by Erudus.

We do not accept liability for any inaccuracies or incorrect information contained on this site.
Please visit <http://www.erudus.com/terms-and-conditions> for full terms and conditions.