

CBG - CHICKEN BOUILLON POWDER

Cbg - Chicken Bouillon Powder 1x2kg

PRODUCT DESCRIPTION

Chicken powder concentrate.

Brand	Non-branded
Manufacturer Product Code	CBGCHIMIX2
Product Type	Food
Product Category	Gravy / Bouillon
Storage Type	Ambient
Erudus ID	084c0f5b60634930a0a4d8a399e4fc3d
Specification Type	Generic

Inner Component GTIN	5056750402804
Manufacturer Component Code	CBGCHIMIX2

INGREDIENTS

Ingredient Declaration
Dextrose Monohydrate, Salt, Maize Maltodextrin, Yeast Extract, Potato Flakes, Flavorings, Rapeseed Oil, Chicken Powder (2%) (Cooked Chicken Meat (99.9%), Antioxidant: Extract of Rosemary (0.1%)), Herbs & Spices (Turmeric Powder, White Pepper, and Ground Sage).

ALLERGENS

Product Contains:			
Celery/Celeriac	No	Mustard	No
Cereals Containing Gluten	No	Nuts (Tree)	No
Barley	No	Almond nuts	No
Oats	No	Brazil nuts	No
Rye	No	Cashew nuts	No
Wheat (including Spelt and Khorasan)	No	Hazelnuts	No
Crustacea	No	Macadamia (Queensland) nuts	No
Eggs	No	Pecan nuts	No
Fish	No	Pistachio nuts	No
Lupin	No	Walnuts	No
Milk	No	Peanuts	No
Molluscs	No	Sesame Seeds	No
		Soybeans	No
		Sulphur Dioxide and Sulphites	No

SUPPLEMENTARY INGREDIENT INFORMATION

Palm Oil	No
Hydrogenated Vegetable Oil/Fat	No
GM Protein/DNA	No

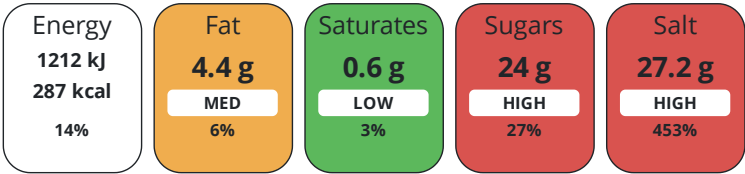
ADDITIVES

Product Contains:			
Artificial Antioxidants	No	Artificial Flavourings	Yes
Artificial Flavour Enhancers	No	Artificial Preservatives	No
		Artificial Sweeteners	No

DIET SUITABILITY

Vegan Diet	No	Vegetarian Diet	No
Halal Diet	No	Kosher Diet	No

Each 100g/ml portion contains:



of your reference intake.

Typical values per 100g/ml : Energy 287kcal / 1212kJ

Nutrient	per 100g	RI per 100g	per 25g serving	RI per 25g serving	per 25g of prepared product
Energy (kJ)	1212 kJ	14%	303 kJ	4%	-
Energy (kcal)	287 kcal	14%	71.8 kcal	4%	-
Fat	4.4 g	6%	1.1 g	2%	-
of which Saturates	0.6 g	3%	0.2 g	1%	-
Carbohydrate	50 g	19%	12.5 g	5%	-
of which Sugars	24 g	27%	6 g	7%	-
Protein	6.7 g	13%	1.7 g	3%	-
Salt	27.2 g	453%	6.8 g	113%	-

Serving Size	25 g
Serving Size Description	25g of mix diluted in 1 litre of water
Number of Servings	80 Servings

Source of Nutritional Information Calculation based on known values of ingredients

SUPPLEMENTARY
NUTRITIONAL
INFORMATION

HFSS (HIGH IN
FAT, SALT AND
SUGAR)

HFSS Status	Yes
HFSS Score	18

HANDLING &
STORAGE
INFORMATION

Directions For Use
25g of mix requires 1 litre of water. Simply blend the required amount of bouillon powder into the appropriate amount of boiling water until dissolved. The contents of this tub if prepared as directed will yield approximately 80 litres.

Storage Instructions
Unopened: Store ambient and use within best before date. Opened: Once opened, keep sealed when not in use

Storage Instructions After Opening
Once opened, keep sealed when not in use

Shelf Life from Time of Production 547 Days

ACCREDITATIONS/
CERTIFICATIONS/
ASSURANCE
SCHEMES
ORIGIN

BRCGS Certified	BRCGS Food Safety
ISO 14001 (Environmental Management)	Roundtable of Sustainable Palm Oil (RSPO)
Product Country of Origin	United Kingdom
Place of Provenance	
Product is manufactured in Northern Ireland (UK).	
Additional Origin Details	
Product is manufactured in Northern Ireland (UK).	
Origin of the Primary Ingredient	Netherlands (the)

PRODUCT CHARACTERISTICS

Standards Testing					
Do you undertake trend analysis of microbiological results?		Yes	Is shelf life testing undertaken?		Yes
			Commercially Sterile		No
Microbiological Standards					
Organism	Description	Frequency	Target	Maximum	Sample (g or ml)
Total Viable Count (TVC) (cfu/g or ml)		Weekly	<1000	100000	20
Enterobacteriaceae (cfu/g or ml)		Weekly	<100	1000	20
Yeast (cfu/g or ml)		Weekly	<100	1000	20
Moulds (cfu/g or ml)		Weekly	<100	1000	20
Salmonella (cfu/g or ml)		Weekly	<0	0	25
Clostridium Perfringens (cfu/g or ml)		Weekly	<100	100	20

ORGANOLEPTICS

Appearance
Smooth, free flowing yellow powder.

Aroma
Chicken tones

Taste
Smooth, free flowing yellow powder with chicken tones.

Texture
Fine, dry and loose

HAZARD CONTROLS

CONFIGURATION

Metal Detection	Yes	Sieving	Yes
Case Configuration		Inner Pack Configuration	
Total Quantity of Inner Components in Outer Case	1 Units	Is Inner Pack Splittable?	No
		Count per Inner Component	1

PRODUCT WEIGHTS

Inner Component	
Variable Weight Consumer Item	No
Inner Component Weight	2 kg
Inner Component Volume	4.33 litre
e mark	Yes
Outer Case	
Outer Case Gross Weight	2.14 kg
Outer Case Net Weight	2 kg

PRODUCT DIMENSIONS

Inner Component		Inner Pack	
Inner Component Depth	181 mm	Inner Pack Depth	181 mm
Inner Component Width	181 mm	Inner Pack Width	181 mm
Inner Component Height	172 mm	Inner Pack Height	172 mm
Outer Case			
Outer Case Depth	181 mm		
Outer Case Width	181 mm		
Outer Case Height	172 mm		

PALLET
INFORMATION

Quantity of Cases Per Pallet Layer	30 Cases	Pallet Type	UK Standard Pallet
Quantity of Layers Per Pallet	6 Layers	Pallet Height	1.3 MTR
Quantity of Cases Per Pallet	180 Cases	Pallet Gross Weight	416 kg

PACKAGING

Inner Pack Packaging						
Type	Materials	Weight	Recycled Plastic %	Recyclable	Returnable	Composite
Tub	Plastic / PP (Polypropylene)	110 g	0 %	Yes	No	Yes
Lid	Plastic / PP (Polypropylene)	27 g	0 %	Yes	No	Yes
Outer Case Packaging						
Type	Materials	Weight	Recycled Plastic %	Recyclable	Returnable	Composite
Divider	Plastic / PP (Polypropylene)	672 g	0 %	Yes	No	No
Transport Packaging						
Type	Materials	Weight	Recycled Plastic %	Recyclable	Returnable	Composite
Pallet	Wood	27000 g	- %	Yes	Yes	No
Pallet Wrap	Plastic / PE (Polyethylene)	140 g	0 %	Yes	No	Yes

MARKETING
INFORMATION

Marketing Description
A rich, savoury chicken-flavoured powder concentrate designed to enhance the depth of soups, stews, and sauces.

OTHER
INFORMATION
CONTACT
INFORMATION

Address	Technical Contact
Rich Sauces	Lynsey Mawhinney
34 Jubilee Road	QA Team Lead
Newtownards	lynsey.mawhinney@richsauces.com
Down	
BT23 6YH	P: (Phone) +44 2891 819004
England	
P: (Phone) 02891819004	
Complaints Contact	Commercial Contact
Lynsey Mawhinney	Pam Gourley
QA Team Lead	Sales Manager
lynsey.mawhinney@richsauces.com	pam@richsauces.com
P: (Phone) +44 2891 819004	P: (Phone) +44 2891 819004

The information on the [Erudus System](#) has been supplied by the manufacturers of the products and, whilst the owners of the Erudus System take steps to ensure the information is regularly updated, they give no warranty and no guarantee that the information is accurate. Product information and ingredients may change, please always read product labels carefully in addition to using the information provided by Erudus.

We do not accept liability for any inaccuracies or incorrect information contained on this site.
Please visit <http://www.erudus.com/terms-and-conditions> for full terms and conditions.