

# CBG - BEEF BOUILLON PASTE

Cbg - Beef Bouillon Paste

## PRODUCT DESCRIPTION

Beef paste concentrate.

Brand	Non-branded
Manufacturer Product Code	CBGBEPAS1X2
Product Type	Food
Product Category	Gravy / Bouillon
Storage Type	Ambient
Erudus ID	c53514eba96a45cfbee4ffd7adac2e63
Specification Type	Generic

Inner Component GTIN	5056750402835
Outer Case GTIN	5056750402842

## INGREDIENTS

**Ingredient Declaration**  
Salt, Palm Oil, Maltodextrin Maize, Flavourings (Containing Flavourings, Yeast Extract, Hydrolised Vegetable Protein, MSG and Rapeseed Oil), Potato Flakes, Yeast Extract, Sugar, Rapeseed Oil, Beef Extract (1.5%) (Maltodextrin, Beef Extract), Beef Stock (1%) (Salt, Maltodextrin, Yeast Extract, Flavouring, Rapeseed Oil, Beef Extract, Colour: Ammonia Caramel), Natural Fried Onion Flavouring, Garlic Powder, Carrot Powder, Black Pepper Oil (Black Pepper Oil, Yeast, and Maltodextrin).

## ALLERGENS

<i>Product Contains:</i>	
Celery/Celeriac	No
Cereals Containing Gluten	No
Barley	No
Oats	No
Rye	No
Wheat (including Spelt and Khorasan)	No
Crustacea	No
Eggs	No
Fish	No
Lupin	No
Milk	No
Molluscs	No
Mustard	No
Nuts (Tree)	No
Almond nuts	No
Brazil nuts	No
Cashew nuts	No
Hazelnuts	No
Macadamia (Queensland) nuts	No
Pecan nuts	No
Pistachio nuts	No
Walnuts	No
Peanuts	No
Sesame Seeds	No
Soybeans	No
Sulphur Dioxide and Sulphites	No

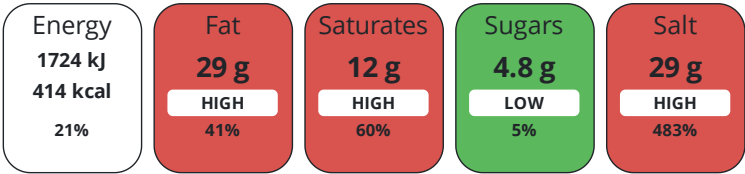
## SUPPLEMENTARY INGREDIENT INFORMATION

Palm Oil	Yes
GM Protein/DNA	No

## ADDITIVES

<i>Product Contains:</i>	
Artificial Flavour Enhancers	No
Artificial Flavourings	Yes
Vegan Diet	No
Vegetarian Diet	No
Halal Diet	No
Kosher Diet	No

Each 100g/ml portion contains:



of your reference intake.

Typical values per 100g/ml : Energy 414kcal / 1724kJ

Nutrient	per 100g	RI per 100g	per 25g serving	RI per 25g serving	per 25g of prepared product
Energy (kJ)	1724 kJ	21%	431 kJ	5%	-
Energy (kcal)	414 kcal	21%	103.5 kcal	5%	-
Fat	29 g	41%	7.3 g	10%	-
of which Saturates	12 g	60%	3 g	15%	-
Carbohydrate	32 g	12%	8 g	3%	-
of which Sugars	4.8 g	5%	1.2 g	1%	-
Protein	6.4 g	13%	1.6 g	3%	-
Salt	29 g	483%	7.3 g	122%	-

Serving Size	25 g
Serving Size Description	25g of mix diluted in 1 litre of water
Number of Servings	40 Servings

Source of Nutritional Information      Calculation based on known values of ingredients

SUPPLEMENTARY  
NUTRITIONAL  
INFORMATION

HFSS (HIGH IN  
FAT, SALT AND  
SUGAR)  
HANDLING &  
STORAGE  
INFORMATION

HFSS Status	No
-------------	----

Directions For Use

25g of mix requires 1 litre of water. Simply blend the required amount of bouillon paste into the appropriate amount of boiling water until dissolved. The contents of this tub if prepared as directed will yield approximately 40 litres.

Storage Instructions

Unopened: Store ambient and use within best before date. Opened: Once opened, keep sealed when not in use

Storage Instructions After Opening

Once opened, keep sealed when not in use

Shelf Life from Time of Production	547 Days
------------------------------------	----------

ACCREDITATIONS/  
CERTIFICATIONS/  
ASSURANCE  
SCHEMES

BRCGS Certified
ISO 14001 (Environmental Management)
Other Accreditation

BRCGS Food Safety
Roundtable of Sustainable Palm Oil (RSPO)

ORIGIN	Product Country of Origin		Northern Ireland					
	Place of Provenance							
	Product is manufactured in Northern Ireland (UK)							
	Additional Origin Details							
PRODUCT CHARACTERISTICS	Product is manufactured in Northern Ireland (UK).							
	Origin of the Primary Ingredient		United Kingdom					
	Standards Testing							
	Do you undertake trend analysis of microbiological results?		Yes		Is shelf life testing undertaken?		Yes	
					Commercially Sterile		No	
	Microbiological Standards							
	Organism		Description	Frequency	Target	Maximum	Sample (g or ml)	
	Total Viable Count (TVC) (cfu/g or ml)			Every Batch	<1000	100000	20	
	Enterobacteriaceae (cfu/g or ml)			Weekly	<100	1000	20	
	Yeast (cfu/g or ml)			Weekly	<100	1000	20	
	Moulds (cfu/g or ml)			Weekly	<100	1000	20	
	Salmonella (cfu/g or ml)			Weekly	<0	0	25	
	Clostridium Perfringens (cfu/g or ml)			Weekly	<100	100	20	
CONFIGURATION	ORGANOLEPTICS							
	Appearance							
	Brown							
	Aroma							
	Beef tones							
	Taste							
	Beef							
	Texture							
	A smooth, but firm paste							
	HAZARD CONTROLS							
	Metal Detection		Yes		Sieving		Yes	
	Case Configuration				Inner Pack Configuration			
	Variable Inner Components in Outer Case		No		Is Inner Pack Splittable?		No	
Total Quantity of Inner Components in Outer Case		2 Units		Quantity of Inner Components in Inner Pack		1		
Total Quantity of Inner Packs in Outer Case		2 Units		Count per Inner Component		1		
Is the Outer Case Splittable?		Yes						
PRODUCT WEIGHTS	Inner Component				Inner Pack			
	Variable Weight Consumer Item		Yes		Inner Pack Gross Weight		1045 g	
	Inner Component Weight		1000 kg		Inner Pack Net Weight		1000 g	
	Inner Component Volume		1050 ml					
	e mark		Yes					
	Outer Case							
	Outer Case Gross Weight		2.1 kg					
	Outer Case Net Weight		2 kg					

PRODUCT  
DIMENSIONS

Inner Component		Inner Pack	
Inner Component Depth	132 mm	Inner Pack Depth	132.4 mm
Inner Component Width	132 mm	Inner Pack Width	132.4 mm
Inner Component Height	119 mm	Inner Pack Height	119 mm
Outer Case			
Outer Case Depth	132 mm		
Outer Case Width	265 mm		
Outer Case Height	119 mm		

PALLET  
INFORMATION

Quantity of Cases Per Pallet Layer	36 Cases	Pallet Type	UK Standard Pallet		
Quantity of Layers Per Pallet	8 Layers	Pallet Height	1.5 MTR		
Quantity of Cases Per Pallet	288 Cases	Pallet Gross Weight	637 kg		

PACKAGING

Inner Pack Packaging						
Type	Materials	Weight	Recycled Plastic %	Recyclable	Returnable	Composite
Tub	Plastic / PP (Polypropylene)	34 g	0 %	Yes	No	No
Lid	Plastic / PP (Polypropylene)	9 g	0 %	Yes	No	No
Outer Case Packaging						
Type	Materials	Weight	Recycled Plastic %	Recyclable	Returnable	Composite
Shrink Wrap	Plastic / LDPE (Low Density Polyethylene)	14.4 g	0 %	Yes	No	Yes
Divider	Plastic / PP (Polypropylene)	672 g	0 %	Yes	No	No
Transport Packaging						
Type	Materials	Weight	Recycled Plastic %	Recyclable	Returnable	Composite
Pallet	Wood	27000 g	- %	Yes	Yes	No
Pallet Wrap	Plastic / PE (Polyethylene)	140 g	0 %	Yes	No	Yes

MARKETING  
INFORMATION

**Marketing Description**

A rich, savoury beef paste concentrate designed to enhance the depth of soups, stews, and sauces.

OTHER  
INFORMATION

CONTACT  
INFORMATION

Address

Rich Sauces  
34 Jubilee Road  
Newtownards  
Down  
BT23 6YH  
England

P: (Phone) 02891819004

Complaints Contact

Lynsey Mawhinney  
QA Team Lead  
lynsey.mawhinney@richsauces.com

P: (Phone) +44 2891 819004

Technical Contact

Lynsey Mawhinney  
QA Team Lead  
lynsey.mawhinney@richsauces.com

P: (Phone) +44 2891 819004

Commercial Contact

Pam Gourley  
Sales Manager  
pam@richsauces.com

P: (Phone) +44 2891 819004

The information on the [Erudus System](#) has been supplied by the manufacturers of the products and, whilst the owners of the Erudus System take steps to ensure the information is regularly updated, they give no warranty and no guarantee that the information is accurate. Product information and ingredients may change, please always read product labels carefully in addition to using the information provided by Erudus.

We do not accept liability for any inaccuracies or incorrect information contained on this site.  
Please visit <http://www.erudus.com/terms-and-conditions> for full terms and conditions.