

# CBG - CHICKEN BOUILLON PASTE

Cbg - Chicken Bouillon Paste

## PRODUCT DESCRIPTION

Chicken paste concentrate.

Brand	Non-branded
Manufacturer Product Code	CBGCHIPAS1X2
Product Type	Food
Product Category	Gravy / Bouillon
Storage Type	Ambient
Erudus ID	33dceaf6904042aca1a58b078b85b3aa
Specification Type	Generic

Inner Component GTIN	5056750402859
Outer Case GTIN	5056750402866

## INGREDIENTS

**Ingredient Declaration**  
Palm Oil, Salt, Maltodextrin Maize, Yeast Extract, Flavourings, Potato Flake, Sugar, Rapeseed Oil, Chicken Powder (2%) (Cooked Chicken Meat, Antioxidant: Extract of Rosemary), White Pepper, Turmeric Powder, Sage.

## ALLERGENS

<i>Product Contains:</i>	
Celery/Celeriac	No
Cereals Containing Gluten	No
Barley	No
Oats	No
Rye	No
Wheat (including Spelt and Khorasan)	No
Crustacea	No
Eggs	No
Fish	No
Lupin	No
Milk	No
Molluscs	No
Mustard	No
Nuts (Tree)	No
Almond nuts	No
Brazil nuts	No
Cashew nuts	No
Hazelnuts	No
Macadamia (Queensland) nuts	No
Pecan nuts	No
Pistachio nuts	No
Walnuts	No
Peanuts	No
Sesame Seeds	No
Soybeans	No
Sulphur Dioxide and Sulphites	No

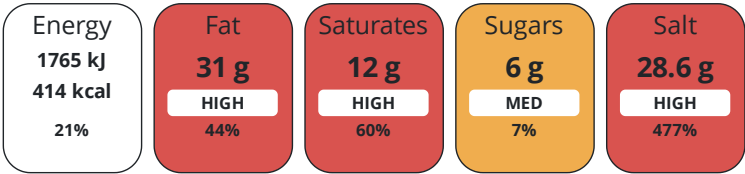
## SUPPLEMENTARY INGREDIENT INFORMATION

Palm Oil	Yes
GM Protein/DNA	No

## ADDITIVES

<i>Product Contains:</i>	
Artificial Antioxidants	No
Artificial Colours	No
Artificial Flavour Enhancers	No
Artificial Flavourings	No
Artificial Preservatives	No
Artificial Sweeteners	No
Vegan Diet	No
Vegetarian Diet	No
Halal Diet	No
Kosher Diet	No

Each 100g/ml portion contains:



of your reference intake.

Typical values per 100g/ml : Energy 414kcal / 1765kJ

Nutrient	per 100g	RI per 100g	per 25g serving	RI per 25g serving	per 25g of prepared product
Energy (kJ)	1765 kJ	21%	441.3 kJ	5%	-
Energy (kcal)	414 kcal	21%	103.5 kcal	5%	-
Fat	31 g	44%	7.8 g	11%	-
of which Saturates	12 g	60%	3 g	15%	-
Carbohydrate	29 g	11%	7.3 g	3%	-
of which Sugars	6 g	7%	1.5 g	2%	-
Protein	8 g	16%	2 g	4%	-
Salt	28.6 g	477%	7.2 g	120%	-

Serving Size	25 g
Serving Size Description	25g of mix diluted in 1 litre of water
Number of Servings	40 Servings

Source of Nutritional Information	Calculation based on known values of ingredients
-----------------------------------	--

SUPPLEMENTARY  
NUTRITIONAL  
INFORMATION

HFSS (HIGH IN  
FAT, SALT AND  
SUGAR)  
HANDLING &  
STORAGE  
INFORMATION

HFSS Status	No
-------------	----

Directions For Use

25g of mix requires 1 litre of water. Simply blend the required amount of bouillon paste into the appropriate amount of boiling water until dissolved. The contents of this tub if prepared as directed will yield approximately 40 litres.

Storage Instructions

Unopened: Store ambient and use within best before date. Opened: Once opened, keep sealed when not in use

Storage Instructions After Opening

Once opened, keep sealed when not in use

Shelf Life from Time of Production	547 Days
------------------------------------	----------

ACCREDITATIONS/  
CERTIFICATIONS/  
ASSURANCE  
SCHEMES  
ORIGIN

BRCGS Certified	BRCGS Food Safety
ISO 14001 (Environmental Management)	Roundtable of Sustainable Palm Oil (RSPO)
Product Country of Origin	Northern Ireland
Place of Provenance	Product is manufactured in Northern Ireland (UK).
Additional Origin Details	Product is manufactured in Northern Ireland (UK).
Origin of the Primary Ingredient	United Kingdom

PRODUCT CHARACTERISTICS

Standards Testing	
Do you undertake trend analysis of microbiological results?	Yes
Is shelf life testing undertaken?	Yes
Commercially Sterile	No

Microbiological Standards					
Organism	Description	Frequency	Target	Maximum	Sample (g or ml)
Total Viable Count (TVC) (cfu/g or ml)		Weekly	<1000	100000	20
Enterobacteriaceae (cfu/g or ml)		Weekly	<100	1000	20
Yeast (cfu/g or ml)		Every Batch	<100	1000	20
Moulds (cfu/g or ml)		Every Batch	<100	1000	20
Salmonella (cfu/g or ml)		Every Batch	<0	0	25
Clostridium Perfringens (cfu/g or ml)		Weekly	<100	100	20

ORGANOLEPTICS

**Appearance**  
Light brown colour

**Aroma**  
Chicken tones

**Taste**  
Chicken

**Texture**  
A smooth, but firm paste

HAZARD CONTROLS

CONFIGURATION

Metal Detection	Yes	Sieving	Yes
Case Configuration		Inner Pack Configuration	
Variable Inner Components in Outer Case	No	Is Inner Pack Splittable?	No
Total Quantity of Inner Components in Outer Case	2 Units	Quantity of Inner Components in Inner Pack	1
Total Quantity of Inner Packs in Outer Case	2 Units	Count per Inner Component	1
Is the Outer Case Splittable?	Yes		

PRODUCT WEIGHTS

Inner Component		Inner Pack	
Variable Weight Consumer Item	Yes	Inner Pack Gross Weight	1045 g
Inner Component Weight	1000 kg	Inner Pack Net Weight	1000 g
Inner Component Volume	1050 ml		
e mark	Yes		
Outer Case			
Outer Case Gross Weight	2.1 kg		
Outer Case Net Weight	2 kg		

PRODUCT  
DIMENSIONS

Inner Component		Inner Pack	
Inner Component Depth	132 mm	Inner Pack Depth	132.4 mm
Inner Component Width	132 mm	Inner Pack Width	132.4 mm
Inner Component Height	119 mm	Inner Pack Height	119 mm
Outer Case			
Outer Case Depth	132 mm		
Outer Case Width	265 mm		
Outer Case Height	119 mm		

PALLET  
INFORMATION

Quantity of Cases Per Pallet Layer	36 Cases	Pallet Type	UK Standard Pallet		
Quantity of Layers Per Pallet	8 Layers	Pallet Height	1.5 MTR		
Quantity of Cases Per Pallet	288 Cases	Pallet Gross Weight	637 kg		

PACKAGING

Inner Pack Packaging						
Type	Materials	Weight	Recycled Plastic %	Recyclable	Returnable	Composite
Tub	Plastic / PP (Polypropylene)	34 g	0 %	Yes	No	No
Lid	Plastic / PP (Polypropylene)	9 g	0 %	Yes	No	No
Outer Case Packaging						
Type	Materials	Weight	Recycled Plastic %	Recyclable	Returnable	Composite
Shrink Wrap	Plastic / LDPE (Low Density Polyethylene)	14.4 g	0 %	Yes	No	Yes
Divider	Plastic / PP (Polypropylene)	672 g	0 %	Yes	No	No
Transport Packaging						
Type	Materials	Weight	Recycled Plastic %	Recyclable	Returnable	Composite
Pallet	Wood	27000 g	- %	Yes	Yes	No
Pallet Wrap	Plastic / PE (Polyethylene)	140 g	0 %	Yes	No	Yes

MARKETING  
INFORMATION

Marketing Description	A rich, savoury chicken paste concentrate designed to enhance the depth of soups, stews, and sauces.				
-----------------------	--	--	--	--	--

OTHER  
INFORMATION

CONTACT  
INFORMATION

Address

Rich Sauces  
34 Jubilee Road  
Newtownards  
Down  
BT23 6YH  
England

P: (Phone) 02891819004

Complaints Contact

Lynsey Mawhinney  
QA Team Lead  
lynsey.mawhinney@richsauces.com

P: (Phone) +44 2891 819004

Technical Contact

Lynsey Mawhinney  
QA Team Lead  
lynsey.mawhinney@richsauces.com

P: (Phone) +44 2891 819004

Commercial Contact

Pam Gourley  
Sales Manager  
pam@richsauces.com

P: (Phone) +44 2891 819004

The information on the [Erudus System](#) has been supplied by the manufacturers of the products and, whilst the owners of the Erudus System take steps to ensure the information is regularly updated, they give no warranty and no guarantee that the information is accurate. Product information and ingredients may change, please always read product labels carefully in addition to using the information provided by Erudus.

We do not accept liability for any inaccuracies or incorrect information contained on this site.  
Please visit <http://www.erudus.com/terms-and-conditions> for full terms and conditions.