

14484

# White Bloomer (14+2) x8 Frozen

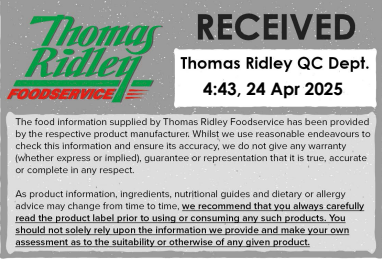
White Bloomer 8x

## PRODUCT DESCRIPTION

A white dough baked in a dome lidded tin, sliced 16+/-2mm to give 14 slices + 2 crusts

Brand	Fosters Bakery (Staincross) Limited
Manufacturer Product Code	6598
Product Type	Food
Product Category	Bread and Bread Products
Storage Type	Frozen
Erudus ID	9828eb1dd1eb4bfb85501704da3bdf19
Specification Type	Legacy

Outer Case GTIN5020179065988



## INGREDIENTS

### Ingredient Declaration

**WHEAT FLOUR** (WHEAT Flour, Calcium Carbonate, Iron, Niacin, Thiamin), Water, Yeast, Salt, Palm Oil, Rapeseed Oil, Emulsifiers[Mono and di-glycerides of fatty acids,Mono and di-acetyltartaric acid esters of mono and di-glycerides of fatty acids], **BARLEY** Malt Flour, Flour treatment agent[Ascorbic Acid],

## ALLERGENS

Product Contains:

Celery/Celeriac	No
Cereals Containing Gluten	Yes
Barley	Yes
Oats	No
Rye	No
Wheat (including Spelt and Khorasan)	Yes
Gluten content <20ppm	No
Crustacea	No
Eggs	May Contain
Fish	No
Lupin	No
Milk	May Contain
Molluscs	No

Mustard	No
Nuts (Tree)	No
Almond nuts	No
Brazil nuts	No
Cashew nuts	No
Hazelnuts	No
Macadamia (Queensland) nuts	No
Pecan nuts	No
Pistachio nuts	No
Walnuts	No
Peanuts	No
Sesame Seeds	No
Soybeans	May Contain
Sulphur Dioxide and Sulphites	No

Risk Source:

### Additional Allergen Information

Manufactured on a site that handles milk, egg, soya May contain Milk, Egg, Soya

## SUPPLEMENTARY INGREDIENT INFORMATION

Palm Oil	Yes
Hydrogenated Vegetable Oil/Fat	No
GM Protein/DNA	No

ADDITIVES

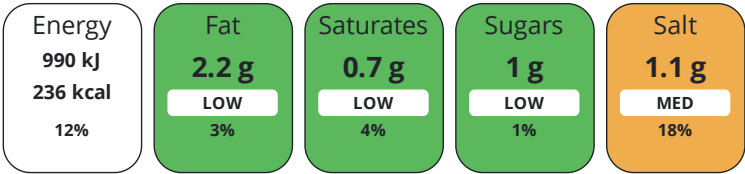
Product Contains:

Artificial Antioxidants	No	Artificial Flavourings	No
Artificial Colours	No	Artificial Preservatives	No
Artificial Flavour Enhancers	No	Artificial Sweeteners	No
Suitable for Coeliacs	No	Halal Diet	No
Kosher Diet	No	Vegetarian Diet	Suitable for
Vegan Diet	Suitable for		

DIET  
SUITABILITY

NUTRITIONAL  
INFORMATION

Each 100g/ml portion contains:



of your reference intake.

Typical values per 100g/ml : Energy 236kcal / 990kJ

Nutrient	per 100g/ml	RI per 100g/ml	per 51g/ml serving	RI per 51g/ml serving
Energy (kJ)	990 kJ	12%	504.9 kJ	6%
Energy (kcal)	236 kcal	12%	120.4 kcal	6%
Fat	2.2 g	3%	1.1 g	2%
of which Saturates	0.7 g	4%	0.4 g	2%
of which Mono-unsaturates	0.56 g		0.3 g	
of which Polyunsaturates	0.57 g		0.3 g	
Carbohydrate	45.3 g	17%	23.1 g	9%
of which Sugars	1 g	1%	0.5 g	1%
Fibre	2.8 g		1.4 g	
Protein	8.6 g	17%	4.4 g	9%
Salt	1.1 g	18%	0.6 g	10%
Sodium	436 mg		222.4 mg	

Serving Size	51 g
--------------	------

SUPPLEMENTARY  
NUTRITIONAL  
INFORMATION

HFSS (HIGH IN  
FAT, SALT AND  
SUGAR)  
HANDLING &  
STORAGE  
INFORMATION

HFSS Status	No
-------------	----

Directions For Use

Defrost in unopened packaging at room temperature. Once defrosted, do not refreeze.

Storage Instructions

Frozen < -18 C

Shelf Life from Time of Production	365 Days
------------------------------------	----------

ACCREDITATIONS/  
CERTIFICATIONS/  
ASSURANCE  
SCHEMES

BRCGS Certified	Roundtable of Sustainable Palm Oil (RSPO)
Other Accreditation	

ORIGIN	Product Country of Origin		United Kingdom				
	Additional Origin Details						
PRODUCT CHARACTERISTICS	Manufactured in the UK from ingredients sourced from multiple countries						
	Standards Testing						
	Do you undertake trend analysis of microbiological results?		Yes		Is shelf life testing undertaken?		Yes
	Microbiological Standards						
	Organism	Description	Frequency	Target	Maximum	Sample (g or ml)	
	Coliforms (cfu/g or ml)		Annually	<100	1000	-	
	E. Coli (cfu/g or ml)		Annually	<20	10	-	
	Listeria SPP (cfu/g or ml)		Annually	<0	0	25	
	Salmonella (cfu/g or ml)		Annually	<0	0	25	
	Aerobic Colony Count (ACC) (cfu/g or ml)		Annually	<10000	1000000	-	
Coagulase-positive Staphylococci (cfu/g or ml)		Annually	<20	1000	-		
CONFIGURATION	Case Configuration			Inner Pack Configuration			
	Total Quantity of Inner Components in Outer Case		8 Units				
	Is the Outer Case Splittable?		No				
PRODUCT WEIGHTS	Inner Component						
	Variable Weight Consumer Item		No				
	Weight/Volume						
	800g						
	Outer Case						
PRODUCT DIMENSIONS	Outer Case Gross Weight		7 kg				
	Outer Case Net Weight		6.4 kg				
	Inner Component						
	Inner Component Depth		265 mm				
	Inner Component Width		150 mm				
	Inner Component Height		120 mm				
	Outer Case						
	Outer Case Depth		600 mm				
	Outer Case Width		275 mm				
	Outer Case Height		242 mm				
PALLET INFORMATION	Quantity of Cases Per Pallet Layer		6 Cases		Pallet Height		1.6 MTR
	Quantity of Layers Per Pallet		6 Layers		Pallet Gross Weight		277 kg
	Quantity of Cases Per Pallet		36 Cases				
PACKAGING	Inner Component Packaging						
	Type	Materials	Weight	Recycled Plastic %	Recyclable	Returnable	Composite
	Bag	Plastic	48 g	- %			
	Outer Case Packaging						
	Type	Materials	Weight	Recycled Plastic %	Recyclable	Returnable	Composite
	Case	Paper/Cardboard	466 g	- %			

Transport Packaging

Type	Materials	Weight	Recycled Plastic %	Recyclable	Returnable	Composite
Other	Plastic	120 g	- %		Yes	
Other	Wood	25000 g	- %		Yes	

OTHER  
INFORMATION

Manufacturer Comments

None

CONTACT  
INFORMATION

Address

Fosters Bakery (Staincross) Limited  
Towngate  
Mapplewell  
Barnsley  
South Yorkshire  
S75 6AS  
England

P: (Phone) 01226 382877

Complaints Contact

Mollie Stradling  
Technical Team  
technical@fostersbakery.co.uk

P: (Phone) 01226 382877

Technical Contact

technical@fostersbakery.co.uk

P: (Phone) 01226 382877

Commercial Contact

Shaun Fearnley  
Sales  
sf@fostersbakery.co.uk

P: (Phone) 07974 442864

The information on the [Erudus System](#) has been supplied by the manufacturers of the products and, whilst the owners of the Erudus System take steps to ensure the information is regularly updated, they give no warranty and no guarantee that the information is accurate. Product information and ingredients may change, please always read product labels carefully in addition to using the information provided by Erudus.

We do not accept liability for any inaccuracies or incorrect information contained on this site.  
Please visit <http://www.erudus.com/terms-and-conditions> for full terms and conditions.