

14486

Shaken Udder Chocolush Ambient 8 x 330ml

Su Chocolush Amb 8x365g

PRODUCT DESCRIPTION

Shaken Udder Ambient Chocolate Milkshake 8 x 330ml, UHT pasteurised milk drink with Belgian chocolate

Brand	Shaken Udder
Manufacturer Product Code	S4100
Product Type	Drink
Product Category	Drinks - General
Storage Type	Ambient
Erudus ID	54e3c82643dc454fa34d9379aff9be39
Specification Type	Drinks

Inner Component GTIN	5060342471482
Outer Case GTIN	05060342471499



INGREDIENTS

Ingredient Declaration
Semi-Skimmed MILK (93%), Sugar, MILK Chocolate (1.5%) (Sugar, Cocoa Mass, Whole MILK Powder, Cocoa Butter, Skimmed MILK Powder), Dark Chocolate (Sugar, Cocoa Mass, Fat Reduced Cocoa Powder, Natural Vanilla Flavouring), Stabilisers (Cellulose, Cellulose Gum, Carrageenan), Fat Reduced Cocoa Powder, Natural Flavourings, Salt.

ALLERGENS

Product Contains:

Celery/Celeriac	No	Mustard	No
Cereals Containing Gluten	No	Nuts (Tree)	No
Barley	No	Almond nuts	No
Oats	No	Brazil nuts	No
Rye	No	Cashew nuts	No
Wheat (including Spelt and Khorasan)	No	Hazelnuts	No
Crustacea	No	Macadamia (Queensland) nuts	No
Eggs	No	Pecan nuts	No
Fish	No	Pistachio nuts	No
Lupin	No	Walnuts	No
Milk	Yes	Peanuts	No
Molluscs	No	Sesame Seeds	No
		Soybeans	No
		Sulphur Dioxide and Sulphites	No

Additional Allergen Information

Contains Milk

SUPPLEMENTARY
INGREDIENT
INFORMATION

Palm Oil	No
Hydrogenated Vegetable Oil/Fat	No
GM Protein/DNA	No

ADDITIVES

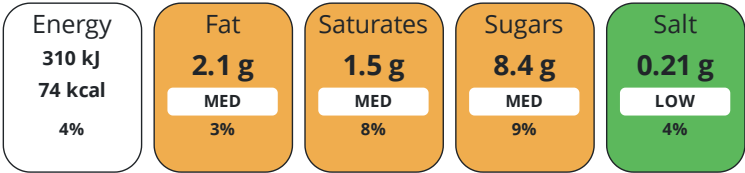
Product Contains:

Artificial Antioxidants	No	Artificial Flavourings	No
Artificial Colours	No	Artificial Preservatives	No
Artificial Flavour Enhancers	No	Artificial Sweeteners	No
Vegan Diet	No	Vegetarian Diet	Suitable for
Halal Diet	No	Kosher Diet	No

DIET
SUITABILITY

NUTRITIONAL
INFORMATION

Each 100g/ml portion contains:



of your reference intake.

Typical values per 100g/ml : Energy 74kcal / 310kJ

Nutrient	per 100ml	RI per 100ml	per 330ml serving	RI per 330ml serving
Energy (kJ)	310 kJ	4%	1023 kJ	12%
Energy (kcal)	74 kcal	4%	244.2 kcal	12%
Fat	2.1 g	3%	6.9 g	10%
of which Saturates	1.5 g	8%	5 g	25%
Carbohydrate	10 g	4%	33 g	13%
of which Sugars	8.4 g	9%	27.7 g	31%
Fibre	0.9 g		3 g	
Protein	3.5 g	7%	11.6 g	23%
Salt	0.21 g	4%	0.7 g	12%
Serving Size	330 ml			

VITAMINS AND
MINERALS

Nutrient	per 100ml	RI per 100ml	per 330ml serving	RI per 330ml serving
Calcium	124 mg	16%	409.2 mg	51%

SUPPLEMENTARY
NUTRITIONAL
INFORMATION

HFSS (HIGH IN
FAT, SALT AND
SUGAR)
HANDLING &
STORAGE
INFORMATION

HFSS Status	No
Directions For Use	Best Served chilled
Storage Instructions	Store as Ambient. Once opened keep refrigerated and consume within 2 days
Shelf Life from Time of Production	120 Days
BRCGS Certified	
Product Country of Origin	Germany
Origin of the Primary Ingredient	

ACCREDITATIONS/
CERTIFICATIONS/
ASSURANCE
SCHEMES
ORIGIN

PRODUCT CHARACTERISTICS	Standards Testing						
	Do you undertake trend analysis of microbiological results?	Yes	Is shelf life testing undertaken?		Yes		
CONFIGURATION	Case Configuration		Inner Pack Configuration				
	Total Quantity of Inner Components in Outer Case	8 Units					
PRODUCT WEIGHTS	Inner Component						
	Inner Component Weight	365 g					
	Net Drained Weight	0.03 g					
	Outer Case						
	Outer Case Gross Weight	3.14 kg					
	Outer Case Net Weight	2.68 kg					
PRODUCT DIMENSIONS	Inner Component						
	Inner Component Depth	60 mm					
	Inner Component Width	60 mm					
	Inner Component Height	168 mm					
	Outer Case						
	Outer Case Depth	243 mm					
	Outer Case Width	125 mm					
	Outer Case Height	171 mm					
	PALLET INFORMATION	Quantity of Cases Per Pallet Layer	27 Cases	Pallet Type		UK Standard Pallet	
		Quantity of Layers Per Pallet	9 Layers	Pallet Height		1.7 MTR	
Quantity of Cases Per Pallet		243 Cases	Pallet Gross Weight		761 kg		
PACKAGING	Inner Component Packaging						
	Type	Materials	Weight	Recycled Plastic %	Recyclable	Returnable	Composite
	Bottle	Plastic	29 g	- %			
	Outer Case Packaging						
	Type	Materials	Weight	Recycled Plastic %	Recyclable	Returnable	Composite
	Case	Plastic	3.3 g	- %			
	Case	Paper/Cardboard	35 g	- %			
MARKETING INFORMATION	Marketing Description						
	Packed full of fabulous flavour and incredible ingredients, this silky-smooth milkshake is made with bags of blockbusting Belgian chocolate and no artificial colours, flavours or preservatives						
OTHER INFORMATION	Commodity Code		2202999990				
CONTACT INFORMATION	Address						
	Shaken Udder						
	Heathwell Farm						
	Simpsons Lane						
	Tiptree						
	Colchester						
	CO5 0PP						
United Kingdom							
	P: (Phone) 01621 868710						

The information on the [Erudus System](#) has been supplied by the manufacturers of the products and, whilst the owners of the Erudus System take steps to ensure the information is regularly updated, they give no warranty and no guarantee that the information is accurate. Product information and ingredients may change, please always read product labels carefully in addition to using the information provided by Erudus.

We do not accept liability for any inaccuracies or incorrect information contained on this site.
Please visit <http://www.erudus.com/terms-and-conditions> for full terms and conditions.