

14487

Shaken Udder Strawberry Dream Ambient 8 x 330ml

Su Strawberry Amb 8x365g

PRODUCT DESCRIPTION

Shaken Udder Ambient Strawberry Milkshake 8 x 330ml UHT pasteururised milk drink with Strawberries and cream

Brand	Shaken Udder
Manufacturer Product Code	S4104
Effective Date	Dec 9, 2024
Product Type	Drink
Product Category	Drinks - General
Storage Type	Ambient
Erudus ID	229385c5216d499089b38aee61fbf9b9
Specification Type	Drinks

Inner Component GTIN	5060342471529
Outer Case GTIN	05060342471536



INGREDIENTS

Ingredient Declaration
Semi-Skimmed **Milk** (92%), Sugar, Strawberry Puree (2%), Cream (1%) **Milk**, Stabilisers (Cellulose, Cellusose Gum, Carrageenan), Natural Colouring: Lycopene From Red Tomatoes, Natural Flavourings, Acidity Regulator: Sodium Carbonate

ALLERGENS

<i>Product Contains:</i>	
Celery/Celeriac	No
Cereals Containing Gluten	No
Barley	No
Oats	No
Rye	No
Wheat (including Spelt and Khorasan)	No
Crustacea	No
Eggs	No
Fish	No
Lupin	No
Milk	Yes
Molluscs	No
Mustard	No
Nuts (Tree)	No
Almond nuts	No
Brazil nuts	No
Cashew nuts	No
Hazelnuts	No
Macadamia (Queensland) nuts	No
Pecan nuts	No
Pistachio nuts	No
Walnuts	No
Peanuts	No
Sesame Seeds	No
Soybeans	No
Sulphur Dioxide and Sulphites	No

Additional Allergen Information
Contains Milk

SUPPLEMENTARY
INGREDIENT
INFORMATION

Palm Oil	No
Hydrogenated Vegetable Oil/Fat	No
GM Protein/DNA	No

ADDITIVES

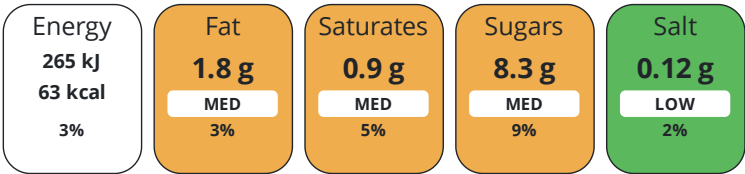
Product Contains:			
Artificial Antioxidants	No	Artificial Flavourings	No
Artificial Colours	No	Artificial Preservatives	No
Artificial Flavour Enhancers	No	Artificial Sweeteners	No

DIET
SUITABILITY

Vegan Diet	No	Vegetarian Diet	Suitable for
Halal Diet	No	Kosher Diet	No

NUTRITIONAL
INFORMATION

Each 100g/ml portion contains:



of your reference intake.

Typical values per 100g/ml : Energy 63kcal / 265kj

Nutrient	per 100ml	RI per 100ml	per 330ml serving	RI per 330ml serving
Energy (kJ)	265 kJ	3%	874.5 kJ	10%
Energy (kcal)	63 kcal	3%	207.9 kcal	10%
Fat	1.8 g	3%	5.9 g	8%
of which Saturates	0.9 g	5%	3 g	15%
Carbohydrate	8.8 g	3%	29 g	11%
of which Sugars	8.3 g	9%	27.4 g	30%
Protein	2.7 g	5%	8.9 g	18%
Salt	0.12 g	2%	0.4 g	7%

Serving Size	330 ml
--------------	--------

VITAMINS AND
MINERALS

Nutrient	per 100ml	RI per 100ml	per 330ml serving	RI per 330ml serving
Calcium	111 mg	14%	366.3 mg	46%

SUPPLEMENTARY
NUTRITIONAL
INFORMATION

HFSS (HIGH IN
FAT, SALT AND
SUGAR)
HANDLING &
STORAGE
INFORMATION

HFSS Status	No
-------------	----

Directions For Use

Best Served Chilled

Storage Instructions

Store as Ambient, once opened keep refrigerated and consume within 2 days

Shelf Life from Time of Production	270 Days
------------------------------------	----------

ACCREDITATIONS/
CERTIFICATIONS/
ASSURANCE
SCHEMES
ORIGIN

BRCGS Certified

Product Country of OriginGermany

Origin of the Primary Ingredient

PRODUCT
CHARACTERISTICS

Standards Testing

Do you undertake trend analysis of microbiological results?	Yes	Is shelf life testing undertaken?	Yes
---	-----	-----------------------------------	-----

CONFIGURATION

Case Configuration	Inner Pack Configuration
Total Quantity of Inner Components in Outer Case	8 Units

PRODUCT
WEIGHTS

Inner Component	
Inner Component Weight	365 g
Net Drained Weight	0.03 g
Outer Case	
Outer Case Gross Weight	3.14 kg
Outer Case Net Weight	2.68 kg

PRODUCT
DIMENSIONS

Inner Component	
Inner Component Depth	60 mm
Inner Component Width	60 mm
Inner Component Height	168 mm
Outer Case	
Outer Case Depth	243 mm
Outer Case Width	125 mm
Outer Case Height	175 mm

PALLET
INFORMATION

Quantity of Cases Per Pallet Layer	27 Cases	Pallet Height	1.7 MTR
Quantity of Layers Per Pallet	9 Layers	Pallet Gross Weight	786 kg
Quantity of Cases Per Pallet	243 Cases		

PACKAGING

Inner Component Packaging							
Type	Materials	Weight	Recycled Plastic %	Recyclable	Returnable	Composite	
Bottle	Plastic	29 g	- %				
Outer Case Packaging							
Type	Materials	Weight	Recycled Plastic %	Recyclable	Returnable	Composite	
Case	Plastic	3.3 g	- %				
Case	Paper/Cardboard	35 g	- %				

MARKETING
INFORMATION

Marketing Description

Packed full of fabulous flavour and incredible ingredients, this silky-smooth milkshake is made with succulent strawberries and no artificial colours, flavours or preservatives

OTHER
INFORMATION

Commodity Code2202999990

CONTACT
INFORMATION

Address

Shaken Udder
Heathwell Farm
Simpsons Lane
Tiptree
Colchester
CO5 0PP
United Kingdom

P: (Phone) 01621 868710

The information on the [Erudus System](#) has been supplied by the manufacturers of the products and, whilst the owners of the Erudus System take steps to ensure the information is regularly updated, they give no warranty and no guarantee that the information is accurate. Product information and ingredients may change, please always read product labels carefully in addition to using the information provided by Erudus.

We do not accept liability for any inaccuracies or incorrect information contained on this site.
Please visit <http://www.erudus.com/terms-and-conditions> for full terms and conditions.