

14489

Shaken Udder Chocolate Protein Milkshake

Su Chocolate Protein Milkshake 8x0.37kg

PRODUCT DESCRIPTION

Chocolate Protein Milkshake made with real Belgium Chocolate

Brand	Shaken Udder
Manufacturer Product Code	S4090
Product Type	Drink
Product Category	Milkshakes & Flavoured Milk
Storage Type	Ambient
Erudus ID	6223a65949714d93a538c165dafda300
Specification Type	Dairy



Inner Component GTIN	5060342471390
Outer Case GTIN	05060342471406



INGREDIENTS

Ingredient Declaration

Semi-Skimmed **Milk** (64%), **Milk** Protein (29%), Sugar, **Milk** Chocolate (1.5%) (Sugar, Cocoa Mass, Whole **Milk** Powder, Cocoa Butter, Skimmed **Milk** Powder), Chocolate (1%) (Sugar, Cocoa Mass, Fat Reduced Cocoa, Natural Vanilla Flavouring), Fat Reduced Cocoa (0.4%), Stabilisers (Cellulose, Cellulose Gum, Carrageenan), Natural Flavourings, Salt.

ALLERGENS

Product Contains:

Celery/Celeriac	No
Cereals Containing Gluten	No
Barley	No
Oats	No
Rye	No
Wheat (including Spelt and Khorasan)	No
Crustacea	No
Eggs	No
Fish	No
Lupin	No
Milk	Yes
Molluscs	No

Mustard	No
Nuts (Tree)	No
Almond nuts	No
Brazil nuts	No
Cashew nuts	No
Hazelnuts	No
Macadamia (Queensland) nuts	No
Pecan nuts	No
Pistachio nuts	No
Walnuts	No
Peanuts	No
Sesame Seeds	No
Soybeans	No
Sulphur Dioxide and Sulphites	No

SUPPLEMENTARY INGREDIENT INFORMATION	GM Protein/DNA	No
--------------------------------------------	----------------	----

Thomas
Ridley

FOODSERVICE

RECEIVED

Thomas Ridley QC Dept.

4:58, 25 Apr 2025

The food information supplied by Thomas Ridley Foodservice has been provided by the respective product manufacturer. Whilst we use reasonable endeavours to check this information and ensure its accuracy, we do not give any warranty (whether express or implied), guarantee or representation that it is true, accurate or complete in any respect.

As product information, ingredients, nutritional guides and dietary or allergy advice may change from time to time, we recommend that you always carefully read the product label prior to using or consuming any such products. You should not solely rely upon the information we provide and make your own assessment as to the suitability or otherwise of any given product.



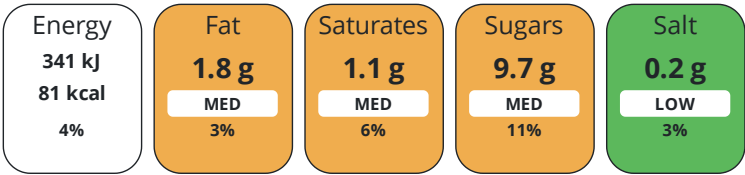
ADDITIVES

Product Contains:

Artificial Colours	No	Artificial Flavourings	No
Artificial Flavour Enhancers	No	Artificial Sweeteners	No

NUTRITIONAL
INFORMATION

Each 100g/ml portion contains:



of your reference intake.

Typical values per 100g/ml : Energy 81kcal / 341kJ

Nutrient	per 100ml	RI per 100ml	per 330ml serving	RI per 330ml serving
Energy (kJ)	341 kJ	4%	1125.3 kJ	13%
Energy (kcal)	81 kcal	4%	267.3 kcal	13%
Fat	1.8 g	3%	5.9 g	8%
of which Saturates	1.1 g	6%	3.6 g	18%
Carbohydrate	9.8 g	4%	32.3 g	12%
of which Sugars	9.7 g	11%	32 g	36%
Protein	6 g	12%	19.8 g	40%
Salt	0.2 g	3%	0.7 g	12%

Serving Size	330 ml
--------------	--------

SUPPLEMENTARY
NUTRITIONAL
INFORMATION

HFSS (HIGH IN
FAT, SALT AND
SUGAR)

HFSS Status	No
HFSS Score	-1

HANDLING &
STORAGE
INFORMATION

Directions For Use

Shake well. Served Chilled

Storage Instructions

Store in a cool, dry place. Once opened keep refrigerated and consume within 2 days

Storage Instructions After Opening

Once opened keep refrigerated and consume within 2 days

Shelf Life from Time of Production	150 Days
------------------------------------	----------

BRCGS Certified

ACCREDITATIONS/
CERTIFICATIONS/
ASSURANCE
SCHEMES
ORIGIN

Product Country of Origin	Germany
Origin of the Primary Ingredient	

PRODUCT
CHARACTERISTICS
CONFIGURATION

Standards Testing	
Case Configuration	Inner Pack Configuration
Variable Inner Components in Outer Case	No
Total Quantity of Inner Components in Outer Case	8 Units
Is the Outer Case Splittable?	Yes

PRODUCT WEIGHTS

Inner Component	
Variable Weight Consumer Item	No
Inner Component Weight	0.37 kg
Inner Component Volume	330 ml
Outer Case	
Outer Case Gross Weight	3 kg
Outer Case Net Weight	2.96 kg

PRODUCT DIMENSIONS

Inner Component	
Inner Component Depth	64 mm
Inner Component Width	64 mm
Inner Component Height	170 mm
Outer Case	
Outer Case Depth	265 mm
Outer Case Width	134 mm
Outer Case Height	173 mm

PALLET INFORMATION

Quantity of Cases Per Pallet Layer	27 Cases	Pallet Height	1.7 MTR
Quantity of Layers Per Pallet	9 Layers	Pallet Gross Weight	731 kg
Quantity of Cases Per Pallet	243 Cases		

MARKETING INFORMATION

Marketing Description

Hurrah! A protein packed milkshake that tastes delicious. Its made with lashings of marvellous milk, nutritious milk protein and bags of glorious Belgian chocolate.

OTHER INFORMATION CONTACT INFORMATION

Address
Shaken Udder
Factory
Shaken Udder
Heathwell Farm
Tiptree
Colchester
CO5 0PP

The information on the [Erudus System](#) has been supplied by the manufacturers of the products and, whilst the owners of the Erudus System take steps to ensure the information is regularly updated, they give no warranty and no guarantee that the information is accurate. Product information and ingredients may change, please always read product labels carefully in addition to using the information provided by Erudus.

We do not accept liability for any inaccuracies or incorrect information contained on this site.
Please visit <http://www.erudus.com/terms-and-conditions> for full terms and conditions.