

ChangedOct 07, 2024 14:00

ReviewedOct 07, 2024 14:00

Erudus ID19684ef23db142e6ad8d2d642a8aac6c

Version1.0

14491

Shaken Udder White Choc Protein Milkshake

Shaken Udder White Choc Protein Milkshake 8x0.37kg

PRODUCT DESCRIPTION

White Choc Protein Milkshake made with real white chocolate

Brand	Shaken Udder
Manufacturer Product Code	S4096
Product Type	Drink
Product Category	Milkshakes & Flavoured Milk
Storage Type	Ambient
Erudus ID	19684ef23db142e6ad8d2d642a8aac6c
Specification Type	Dairy



Inner Component GTIN	5060342471437
Outer Case GTIN	05060342471444




INGREDIENTS

Ingredient Declaration
Semi-Skimmed **Milk** (64%), **Milk** Protein (30%), Sugar, White Chocolate (2%) (Sugar, Cocoa Butter, Whole **Milk** Powder, Skimmed **Milk** Powder), Stabilisers (Cellulose, Cellulose Gum, Carrageenan), Natural Flavourings.


ALLERGENS

Product Contains:			
Celery/Celeriac	No	Mustard	No
Cereals Containing Gluten	No	Nuts (Tree)	No
Barley	No	Almond nuts	No
Oats	No	Brazil nuts	No
Rye	No	Cashew nuts	No
Wheat (including Spelt and Khorasan)	No	Hazelnuts	No
Crustacea	No	Macadamia (Queensland) nuts	No
Eggs	No	Pecan nuts	No
Fish	No	Pistachio nuts	No
Lupin	No	Walnuts	No
Milk	Yes	Peanuts	No
Molluscs	No	Sesame Seeds	No
		Soybeans	No
		Sulphur Dioxide and Sulphites	No

SUPPLEMENTARY INGREDIENT INFORMATION	Palm Oil	No
	Hydrogenated Vegetable Oil/Fat	No
	GM Protein/DNA	No



RECEIVED
Thomas Ridley QC Dept.
5:00, 25 Apr 2025



The food information supplied by Thomas Ridley Foodservice has been provided by the respective product manufacturer. Whilst we use reasonable endeavours to check this information and ensure its accuracy, we do not give any warranty (whether express or implied), guarantee or representation that it is true, accurate or complete in any respect.

As product information, ingredients, nutritional guides and dietary or allergy advice may change from time to time, we recommend that you always carefully read the product label prior to using or consuming any such products. You should not solely rely upon the information we provide and make your own assessment as to the suitability or otherwise of any given product.

ADDITIVES

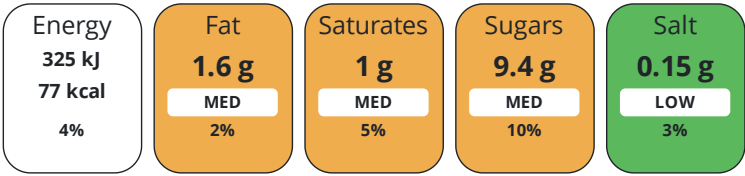
Product Contains:

Artificial Antioxidants	No
Artificial Colours	No
Vegetarian Diet	Suitable for

DIET
SUITABILITY

NUTRITIONAL
INFORMATION

Each 100g/ml portion contains:



of your reference intake.
Typical values per 100g/ml : Energy 77kcal / 325kJ

Nutrient	per 100ml	RI per 100ml	per 330ml serving	RI per 330ml serving
Energy (kJ)	325 kJ	4%	1072.5 kJ	13%
Energy (kcal)	77 kcal	4%	254.1 kcal	13%
Fat	1.6 g	2%	5.3 g	8%
of which Saturates	1 g	5%	3.3 g	17%
Carbohydrate	9.4 g	4%	31 g	12%
of which Sugars	9.4 g	10%	31 g	34%
Protein	6 g	12%	19.8 g	40%
Salt	0.15 g	3%	0.5 g	8%

Serving Size	330 ml
--------------	--------

VITAMINS AND
MINERALS

Nutrient	per 100ml	RI per 100ml	per 330ml serving	RI per 330ml serving
Vitamin B12	0.16 µg	6%	0.5 µg	20%
Calcium	180 mg	23%	594 mg	74%

SUPPLEMENTARY
NUTRITIONAL
INFORMATION

HFSS (HIGH IN
FAT, SALT AND
SUGAR)

HFSS Status	No
HFSS Score	-2

HANDLING &
STORAGE
INFORMATION

Directions For Use	Shake well. Served Chilled
Storage Instructions	Store in a cool, dry place. Once opened keep refrigerated and consume within 2 days
Storage Instructions After Opening	Once opened keep refrigerated and consume within 2 days
Shelf Life from Time of Production	120 Days
Shelf Life From Opening	2 Days

ACCREDITATIONS/
CERTIFICATIONS/
ASSURANCE
SCHEMES

BRCGS Certified

ORIGIN	Product Country of Origin		Germany	
	Origin of the Primary Ingredient			
PRODUCT CHARACTERISTICS	Standards Testing			
	Do you undertake trend analysis of microbiological results?	Yes	Is shelf life testing undertaken?	Yes
CONFIGURATION	Case Configuration		Inner Pack Configuration	
	Variable Inner Components in Outer Case	No	Count per Inner Component	8
	Total Quantity of Inner Components in Outer Case	8 Units		
	Is the Outer Case Splittable?	No		
PRODUCT WEIGHTS	Inner Component			
	Variable Weight Consumer Item	No		
	Inner Component Weight	0.37 kg		
	Inner Component Volume	330 ml		
	Net Drained Weight	0.03 kg		
PRODUCT DIMENSIONS	Outer Case			
	Outer Case Gross Weight	3 kg		
	Outer Case Net Weight	2.96 kg		
	Inner Component			
	Inner Component Depth	64 mm		
	Inner Component Width	64 mm		
	Inner Component Height	170 mm		
	Outer Case			
	Outer Case Depth	265 mm		
PALLET INFORMATION	Outer Case Width	134 mm		
	Outer Case Height	173 mm		
	Quantity of Cases Per Pallet Layer	27 Cases	Pallet Type	UK Standard Pallet
	Quantity of Layers Per Pallet	9 Layers	Pallet Height	1.7 MTR
	Quantity of Cases Per Pallet	243 Cases	Pallet Gross Weight	731 kg
MARKETING INFORMATION	Marketing Description			
	Hurrah! A protein packed milkshake that tastes delicious. It's made with lashings of marvellous milk, nutritious milk protein and creamy white chocolate.			
OTHER INFORMATION	Commodity Code	220299959	Does this product require a "Not for EU" label?	Yes
CONTACT INFORMATION	Address			
	Shaken Udder			
	Factory			
	Shaken Udder			
	Heathwell Farm			
	Tiptree			
	Colchester			
CO5 0PP				

The information on the [Erudus System](#) has been supplied by the manufacturers of the products and, whilst the owners of the Erudus System take steps to ensure the information is regularly updated, they give no warranty and no guarantee that the information is accurate. Product information and ingredients may change, please always read product labels carefully in addition to using the information provided by Erudus.

