

TRIP CBD infused Peach Ginger drink - 12 x 250ml

Trip Peach Ginger 12 X 250ml 12x250g

PRODUCT DESCRIPTION

TRIP CBD infused Peach Ginger drink - 12 x 250ml

Brand	Trip Drink Ltd
Manufacturer Product Code	PGSRP
Product Type	Drink
Product Category	Drinks - General
Storage Type	Ambient
Erudus ID	9d0819e790464964bee147a75800589f
Specification Type	Drinks

Inner Component GTIN	5070000120713
Outer Case GTIN	45070000120711



INGREDIENTS

Ingredient Declaration

Water, fruit juices from concentrate (peach (20%), passion fruit), ginseng, turmeric, lemon balm, chamomile, L-theanine, natural sweeteners (steviol glycosides), natural flavouring (ginger 0.1.%) flavour enhancer (erythritol), CBD (15 MG), contains traces of SOYA LECITHIN

ALLERGENS

Product Contains:

Celery/Celeriac	No
Cereals Containing Gluten	No
Barley	No
Oats	No
Rye	No
Wheat (including Spelt and Khorasan)	No
Crustacea	No
Eggs	No
Fish	No
Lupin	No
Milk	No
Molluscs	No

Mustard	No
Nuts (Tree)	No
Almond nuts	No
Brazil nuts	No
Cashew nuts	No
Hazelnuts	No
Macadamia (Queensland) nuts	No
Pecan nuts	No
Pistachio nuts	No
Walnuts	No
Peanuts	No
Sesame Seeds	No
Soybeans	Yes
Sulphur Dioxide and Sulphites	No

SUPPLEMENTARY INGREDIENT INFORMATION

Palm Oil	No
Hydrogenated Vegetable Oil/Fat	No
GM Protein/DNA	No

ADDITIVES

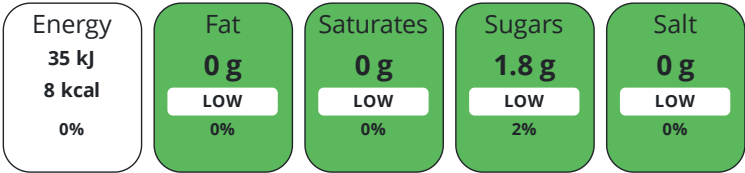
Product Contains:

Artificial Antioxidants	No	Artificial Flavourings	No
Artificial Colours	No	Artificial Preservatives	No
Artificial Flavour Enhancers	No	Artificial Sweeteners	No
Vegan Diet	No	Vegetarian Diet	Suitable for
Halal Diet	No	Kosher Diet	No

DIET
SUITABILITY

NUTRITIONAL
INFORMATION

Each 100g/ml portion contains:



of your reference intake.

Typical values per 100g/ml : Energy 8kcal / 35kJ

Nutrient	per 100ml	RI per 100ml	per 250ml serving	RI per 250ml serving
Energy (kJ)	35.1 kJ	0%	87.8 kJ	1%
Energy (kcal)	8.4 kcal	0%	21 kcal	1%
Fat	0 g	0%	-	
of which Saturates	0 g	0%	-	
of which Mono-unsaturates	0 g		-	
of which Polyunsaturates	0 g		-	
Carbohydrate	2.1 g	1%	5.3 g	2%
of which Sugars	1.8 g	2%	4.5 g	5%
Protein	0 g	0%	-	
Salt	0 g	0%	-	

Serving Size	250 ml
--------------	--------

SUPPLEMENTARY
NUTRITIONAL
INFORMATION

Trans Fats per 100 g/ml	0 g
-------------------------	-----

HFSS (HIGH IN
FAT, SALT AND
SUGAR)
HANDLING &
STORAGE
INFORMATION

HFSS Status	No
-------------	----

Directions For Use

Enjoy me cold (refrigerate before drinking). See base for best before.

Storage Instructions

Store in a cool, dry place.

Shelf Life from Time of Production	547 Days
------------------------------------	----------

ACCREDITATIONS/
CERTIFICATIONS/
ASSURANCE
SCHEMES
ORIGIN

BRCGS Certified	SALSA (Safe & Local Supplier Approval)
-----------------	--

Product Country of Origin	United Kingdom
---------------------------	----------------

Origin of the Primary Ingredient	
----------------------------------	--

PRODUCT
CHARACTERISTICS

Standards Testing			
Do you undertake trend analysis of microbiological results?	No	Is shelf life testing undertaken?	Yes

CONFIGURATION	Case Configuration		Inner Pack Configuration				
	Total Quantity of Inner Components in Outer Case		12 Units				
PRODUCT WEIGHTS	Inner Component						
	Inner Component Weight		250 g				
	Outer Case						
	Outer Case Gross Weight		3.3 kg				
	Outer Case Net Weight		0.13 kg				
PRODUCT DIMENSIONS	Inner Component						
	Inner Component Depth		50 mm				
	Inner Component Width		50 mm				
	Inner Component Height		134 mm				
	Outer Case						
	Outer Case Depth		160 mm				
	Outer Case Width		210 mm				
	Outer Case Height		140 mm				
PALLET INFORMATION	Quantity of Cases Per Pallet Layer		29 Cases		Pallet Height		1.12 MTR
	Quantity of Layers Per Pallet		8 Layers		Pallet Gross Weight		765.6 kg
	Quantity of Cases Per Pallet		232 Cases				
PACKAGING	Inner Component Packaging						
	Type	Materials	Weight	Recycled Plastic %	Recyclable	Returnable	Composite
	Can	Aluminium	12 g	- %			
	Outer Case Packaging						
	Type	Materials	Weight	Recycled Plastic %	Recyclable	Returnable	Composite
	Case	Plastic	30 g	- %			
	Case	Paper/Cardboard	60 g	- %			
OTHER INFORMATION CONTACT INFORMATION	Address						
	Trip Drink Ltd						
	291 Kilburn High Road						
	London						
	NW6 7JR						
	United Kingdom						
P: (Phone) 07805532493							

The information on the [Erudus System](#) has been supplied by the manufacturers of the products and, whilst the owners of the Erudus System take steps to ensure the information is regularly updated, they give no warranty and no guarantee that the information is accurate. Product information and ingredients may change, please always read product labels carefully in addition to using the information provided by Erudus.

We do not accept liability for any inaccuracies or incorrect information contained on this site.
Please visit <http://www.erudus.com/terms-and-conditions> for full terms and conditions.