

Beef Chilli Con Carne 350g

Beef Chilli Con Carne 12x350g

PRODUCT DESCRIPTION

Minced British Beef, Red Kidney Beans, Red and Green Peppers in a Chilli Sauce

Brand	The Authentic Curry Company Limited
Manufacturer Product Code	OCC72
Product Type	Food
Product Category	Ready Meals
Storage Type	Frozen
Erudus ID	de6be97cfc3b4199baa3a355eb6a8480
Specification Type	Generic
Outer Case GTIN	5056750402545

INGREDIENTS

Ingredient Declaration

Water, Onions, Minced Beef (17%), Red Kidney Beans (12%), Red and Green Peppers, Chopped Tomatoes, Tomato Puree, Modified Maize Starch, Brown Sugar, Beef Stock [Beef, Onion, Tomato, Carrot Extract, Herbs, Spices, Garlic, Salt, Glucose Syrup, Flavourings, Maltodextrin. Yeast Extract, Rapeseed Oil, Colour: Ammonia Caramel, Sugar], Colour: Ammonia Caramel, Garlic Puree, Ground Cumin, Paprika, Chilli Powder, Oregano.

ALLERGENS

Product Contains:

Celery/Celeriac	No
Cereals Containing Gluten	No
Barley	No
Oats	No
Rye	No
Wheat (including Spelt and Khorasan)	No
Crustacea	No
Eggs	No
Fish	No
Lupin	No
Milk	No
Molluscs	No

Mustard	No
Nuts (Tree)	No
Almond nuts	No
Brazil nuts	No
Cashew nuts	No
Hazelnuts	No
Macadamia (Queensland) nuts	No
Pecan nuts	No
Pistachio nuts	No
Walnuts	No
Peanuts	No
Sesame Seeds	No
Soybeans	No
Sulphur Dioxide and Sulphites	No

Additional Allergen Information

Produced in a factory or made with ingredients from suppliers that use nuts, gluten, crustaceans, fish, eggs, peanuts, soya, milk, celery, mustard, sesame, sulphur dioxide and molluscs

SUPPLEMENTARY INGREDIENT INFORMATION

Palm Oil	No
Hydrogenated Vegetable Oil/Fat	No
GM Protein/DNA	No

ADDITIVES

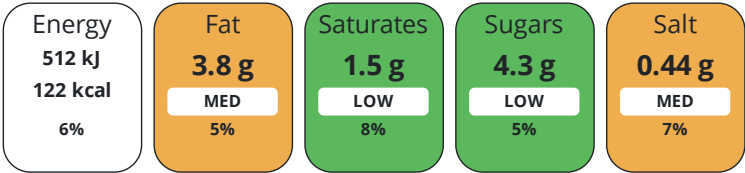
Product Contains:

Artificial Antioxidants	No	Artificial Flavourings	No
Artificial Colours	No	Artificial Preservatives	No
Artificial Flavour Enhancers	No	Artificial Sweeteners	No
Vegan Diet	No	Vegetarian Diet	No
Halal Diet	No	Kosher Diet	No

DIET
SUITABILITY

NUTRITIONAL
INFORMATION

Each 100g/ml portion contains:



of your reference intake.

Typical values per 100g/ml : Energy 122kcal / 512kJ

Nutrient	per 100g	RI per 100g
Energy (kJ)	512 kJ	6%
Energy (kcal)	122 kcal	6%
Fat	3.8 g	5%
of which Saturates	1.5 g	8%
Carbohydrate	12.1 g	5%
of which Sugars	4.3 g	5%
Fibre	1.7 g	
Protein	8.2 g	16%
Salt	0.44 g	7%
Sodium	176 mg	

SUPPLEMENTARY
NUTRITIONAL
INFORMATION

HFSS (HIGH IN
FAT, SALT AND
SUGAR)

HANDLING &
STORAGE
INFORMATION

ACCREDITATIONS/
CERTIFICATIONS/
ASSURANCE
SCHEMES

Source of Nutritional Information	Calculation from known/accepted datasets
Fibre Type	Fibre Unknown
HFSS Status	No
HFSS Score	0
Directions For Use	All appliances vary, the following are guidelines only. Microwave (800 Watt or Category D). Reheat from Frozen. Pierce film several times and microwave on full power for 3 minutes, move product from side to side and microwave on full power for a further 3 minutes. When heated carefully remove the film lid. Ensure the product is piping hot throughout before serving. Stir and serve. Do not reheat.
Storage Instructions	Store at -18c or below.
Shelf Life from Time of Production	365 Days
Shelf Life Once Defrosted	2 Days
BRCGS Certified	BRCGS Food Safety
Other Accreditation	

ORIGIN	Product Country of Origin		Great Britain			
	Additional Origin Details					
PRODUCT CHARACTERISTICS	Produced in Wales					
	Origin of the Primary Ingredient		United Kingdom			
	Standards Testing					
	Do you undertake trend analysis of microbiological results?		Yes	Is shelf life testing undertaken?		No
				Commercially Sterile		No
	Microbiological Standards					
	Organism	Description	Frequency	Target	Maximum	Sample (g or ml)
	Total Viable Count (TVC) (cfu/g or ml)		Annually	<10000	10000	100
	Enterobacteriaceae (cfu/g or ml)		Annually	<100	1000	100
	E. Coli (cfu/g or ml)		Annually	<10	100	100
Staphylococcus Aureus (cfu/g or ml)		Annually	<20	100	100	
Bacillus Cereus (cfu/g or ml)		Annually	<100	10000	100	
Clostridium Perfringens (cfu/g or ml)		Annually	<100	1000	100	
Salmonella (cfu/g or ml)		Annually	=0	0	25	
Listeria SPP (cfu/g or ml)		Annually	=0	0	25	
Aerobic Colony Count (ACC) (cfu/g or ml)		Annually	<10000	10000	100	
Coagulase-positive Staphylococci (cfu/g or ml)		Annually	<20	100	100	
Yeast (cfu/g or ml)		Annually	<200	2000	100	
Moulds (cfu/g or ml)		Annually	<200	2000	100	
ORGANOLEPTICS						
Appearance						
Minced beef cooked in a medium thick sauce with visible red kidney beans, peppers and onions						
Aroma						
Spicy, beef sauce with aroma of red peppers and onions						
Taste						
Chilli with minced beef, red kidney beans, peppers and onions in a spicy tomato based sauce						
Texture						
Tender beef with aldenete beans, peppers and onions						
HAZARD CONTROLS						
CONFIGURATION	Metal Detection		Yes			
	Case Configuration		Inner Pack Configuration			
	Total Quantity of Inner Components in Outer Case		12 Units			
	Is the Outer Case Splittable?		No			

PRODUCT WEIGHTS

Inner Component	
Variable Weight Consumer Item	No
Inner Component Weight	350 g
e mark	Yes
Outer Case	
Outer Case Gross Weight	4.6 kg
Outer Case Net Weight	4.2 kg

PRODUCT DIMENSIONS

Inner Component	
Inner Component Depth	164 mm
Inner Component Width	123 mm
Inner Component Height	35 mm
Outer Case	
Outer Case Depth	325 mm
Outer Case Width	245 mm
Outer Case Height	103 mm

PALLET INFORMATION

Quantity of Cases Per Pallet Layer	14 Cases	Pallet Type	UK Standard Pallet
Quantity of Layers Per Pallet	12 Layers	Pallet Height	1.4 MTR
Quantity of Cases Per Pallet	168 Cases	Pallet Gross Weight	796.7 kg

PACKAGING

Inner Component Packaging						
Type	Materials	Weight	Recycled Plastic %	Recyclable	Returnable	Composite
Poly Treated PET/PE	Plastic	18 g	30.00 %			
Outer Case Packaging						
Type	Materials	Weight	Recycled Plastic %	Recyclable	Returnable	Composite
Case	Plastic	1 g	- %			
Case	Paper/Cardboard	162 g	- %			
Transport Packaging						
Type	Materials	Weight	Recycled Plastic %	Recyclable	Returnable	Composite
Other	Plastic	428 g	- %			
Other	Wood	28000 g	- %			

MARKETING INFORMATION

Marketing Description
Minced British Beef, Red Kidney Beans, Red and Green Peppers in a Chilli Sauce

OTHER INFORMATION

Intrastat/Taric Code	0	Identification/Health Marks	UK RX014
		Value Added Tax Rate	No VAT

CONTACT
INFORMATION

Address

The Authentic Curry Company Limited
Unit 46-47
Hirwaun Industrial Estate, Hirwaun
Aberdare
South Wales
CF44 9UP
Wales

P: (Phone) 01685 810044

Complaints Contact

Kay Tonkin
Technical Manager
kay.tonkin@authenticcurry.co.uk

P: (Phone) 01685 810044

Technical Contact

Kay Tonkin
Technical Manager
kay.tonkin@authenticcurry.co.uk

P: (Phone) 01685 810044

Commercial Contact

Daniel Benbow
Commercial Manager
daniel.benbow@authenticcurry.co.uk

P: (Phone) 01685 810044

The information on the [Erudus System](#) has been supplied by the manufacturers of the products and, whilst the owners of the Erudus System take steps to ensure the information is regularly updated, they give no warranty and no guarantee that the information is accurate. Product information and ingredients may change, please always read product labels carefully in addition to using the information provided by Erudus.

We do not accept liability for any inaccuracies or incorrect information contained on this site.
Please visit <http://www.erudus.com/terms-and-conditions> for full terms and conditions.