

Smoky Three Bean Chilli

Smoky Three Bean Chilli 12x350g

PRODUCT DESCRIPTION

Red Kidney, Black Turtle and Cannellini Beans in a Smoky, Spicy Sauce

Brand	The Authentic Curry Company Limited
Manufacturer Product Code	OSB72
Product Type	Food
Product Category	Ready Meals
Storage Type	Frozen
Erudus ID	2b60e56cdbbd472db19db5db57cce4f5
Specification Type	Generic
Outer Case GTIN	5056750402576



INGREDIENTS

Ingredient Declaration
Mixed Beans (38%), Diced Onions, Water, Chopped Tomato, Diced Red Peppers, Tomato Puree, Modified Maize Starch, Soft Brown Sugar, Rapeseed Oil, Ground Cumin, Smoked Paprika, Caramel, Garlic Puree, Salt, Chilli Powder, Oregano.

Ingredient Statements
Made in a factory where meat is handled.

ALLERGENS

<i>Product Contains:</i>			
Celery/Celeriac	No	Mustard	No
Cereals Containing Gluten	No	Nuts (Tree)	No
Barley	No	Almond nuts	No
Oats	No	Brazil nuts	No
Rye	No	Cashew nuts	No
Wheat (including Spelt and Khorasan)	No	Hazelnuts	No
Crustacea	No	Macadamia (Queensland) nuts	No
Eggs	No	Pecan nuts	No
Fish	No	Pistachio nuts	No
Lupin	No	Walnuts	No
Milk	No	Peanuts	No
Molluscs	No	Sesame Seeds	No
		Soybeans	No
		Sulphur Dioxide and Sulphites	No

Additional Allergen Information
Produced in a factory or made with ingredients from suppliers that use nuts, gluten, crustaceans, fish, eggs, peanuts, soya, milk, celery, mustard, sesame, sulphur dioxide and molluscs

SUPPLEMENTARY INGREDIENT INFORMATION

Palm Oil	No
Hydrogenated Vegetable Oil/Fat	No
GM Protein/DNA	No

ADDITIVES

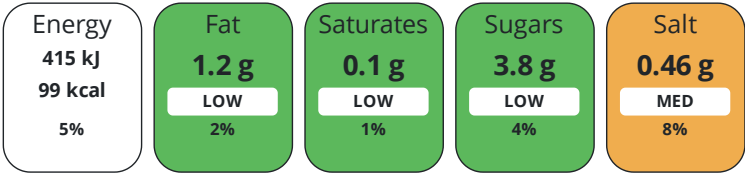
Product Contains:

Artificial Antioxidants	No	Artificial Flavourings	No
Artificial Colours	No	Artificial Preservatives	No
Artificial Flavour Enhancers	No	Artificial Sweeteners	No
Vegan Diet	Suitable for	Vegetarian Diet	Suitable for
Halal Diet	No	Kosher Diet	No

DIET
SUITABILITY

NUTRITIONAL
INFORMATION

Each 100g/ml portion contains:



of your reference intake.

Typical values per 100g/ml : Energy 99kcal / 415kJ

Nutrient	per 100g	RI per 100g
Energy (kJ)	415 kJ	5%
Energy (kcal)	99 kcal	5%
Fat	1.2 g	2%
of which Saturates	0.1 g	1%
Carbohydrate	14.3 g	6%
of which Sugars	3.8 g	4%
Fibre	4.7 g	
Protein	5.3 g	11%
Salt	0.46 g	8%
Sodium	184 mg	

SUPPLEMENTARY
NUTRITIONAL
INFORMATION

HFSS (HIGH IN
FAT, SALT AND
SUGAR)

HANDLING &
STORAGE
INFORMATION

ACCREDITATIONS/
CERTIFICATIONS/
ASSURANCE
SCHEMES

Source of Nutritional Information	Calculation from known/accepted datasets
Fibre Type	Fibre Unknown
HFSS Status	No
HFSS Score	0
Directions For Use	All appliances vary, the following are guidelines only. Microwave (800 Watt or Category D). Reheat from Frozen. Pierce film several times and microwave on full power for 3 minutes, shake product from side to side and microwave on full power for a further 3 minutes. When heated carefully remove the film lid. Ensure the product is piping hot throughout before serving. Stir and serve. Do not reheat.
Storage Instructions	Store at -18c or below.
Shelf Life from Time of Production	365 Days
Shelf Life Once Defrosted	2 Days
BRCGS Certified	BRCGS Food Safety
Other Accreditation	

ORIGIN

Product Country of Origin

Great Britain

Additional Origin Details

Produced in Wales

Origin of the Primary Ingredient

United Kingdom

PRODUCT CHARACTERISTICS

Standards Testing

Do you undertake trend analysis of microbiological results?

Yes

Is shelf life testing undertaken?

No

Commercially Sterile

No

Microbiological Standards

Organism	Description	Frequency	Target	Maximum	Sample (g or ml)
Total Viable Count (TVC) (cfu/g or ml)		Annually	<10000	10000	100
Enterobacteriaceae (cfu/g or ml)		Annually	<100	1000	100
E. Coli (cfu/g or ml)		Annually	<10	100	100
Staphylococcus Aureus (cfu/g or ml)		Annually	<20	100	100
Bacillus Cereus (cfu/g or ml)		Annually	<100	10000	100
Clostridium Perfringens (cfu/g or ml)		Annually	<100	1000	100
Salmonella (cfu/g or ml)		Annually	=0	0	25
Listeria SPP (cfu/g or ml)		Annually	=0	0	25
Aerobic Colony Count (ACC) (cfu/g or ml)		Annually	<10000	10000	100
Coagulase-positive Staphylococci (cfu/g or ml)		Annually	<20	100	100
Yeast (cfu/g or ml)		Annually	<200	2000	100
Moulds (cfu/g or ml)		Annually	<200	2000	100

ORGANOLEPTICS

Appearance

Mixed beans cooked in a medium thick sauce with visible beans, peppers and onions

Aroma

Spicy, smoky sauce with aroma of red peppers and onions

Taste

Mixed beans, peppers and onions in a spicy tomato based sauce

Texture

Aldente beans, peppers and onions

HAZARD CONTROLS

Metal Detection

Yes

CONFIGURATION

Case Configuration

Inner Pack Configuration

Total Quantity of Inner Components in Outer Case

12 Units

Is the Outer Case Splittable?

No

PRODUCT WEIGHTS

Inner Component	
Variable Weight Consumer Item	No
Inner Component Weight	350 g
e mark	Yes
Outer Case	
Outer Case Gross Weight	4.6 kg
Outer Case Net Weight	4.2 kg

PRODUCT DIMENSIONS

Inner Component	
Inner Component Depth	164 mm
Inner Component Width	123 mm
Inner Component Height	35 mm
Outer Case	
Outer Case Depth	325 mm
Outer Case Width	245 mm
Outer Case Height	103 mm

PALLET INFORMATION

Quantity of Cases Per Pallet Layer	14 Cases	Pallet Type	UK Standard Pallet
Quantity of Layers Per Pallet	12 Layers	Pallet Height	1.4 MTR
Quantity of Cases Per Pallet	168 Cases	Pallet Gross Weight	796.7 kg

PACKAGING

Inner Component Packaging						
Type	Materials	Weight	Recycled Plastic %	Recyclable	Returnable	Composite
Poly Treated PET/PE	Plastic	18 g	30.00 %			
Outer Case Packaging						
Type	Materials	Weight	Recycled Plastic %	Recyclable	Returnable	Composite
Case	Plastic	1 g	- %			
Case	Paper/Cardboard	162 g	- %			
Transport Packaging						
Type	Materials	Weight	Recycled Plastic %	Recyclable	Returnable	Composite
Other	Plastic	428 g	- %			
Other	Wood	28000 g	- %			

MARKETING INFORMATION

Marketing Description
Red Kidney, Black Turtle and Cannellini Beans in a Smoky, Spicy Sauce

OTHER INFORMATION

Intrastat/Taric Code	0	Identification/Health Marks	UK RX014
		Value Added Tax Rate	No VAT

CONTACT
INFORMATION

Address

The Authentic Curry Company Limited
Unit 46-47
Hirwaun Industrial Estate, Hirwaun
Aberdare
South Wales
CF44 9UP
Wales

P: (Phone) 01685 810044

Complaints Contact

Kay Tonkin
Technical Manager
kay.tonkin@authenticcurry.co.uk

P: (Phone) 01685 810044

Technical Contact

Kay Tonkin
Technical Manager
kay.tonkin@authenticcurry.co.uk

P: (Phone) 01685 810044

Commercial Contact

Daniel Benbow
Commercial Manager
daniel.benbow@authenticcurry.co.uk

P: (Phone) 01685 810044

The information on the [Erudus System](#) has been supplied by the manufacturers of the products and, whilst the owners of the Erudus System take steps to ensure the information is regularly updated, they give no warranty and no guarantee that the information is accurate. Product information and ingredients may change, please always read product labels carefully in addition to using the information provided by Erudus.

We do not accept liability for any inaccuracies or incorrect information contained on this site.
Please visit <http://www.erudus.com/terms-and-conditions> for full terms and conditions.