

# Provolone Piccante 2kg

Provolone Piccante 2kg

## PRODUCT DESCRIPTION

Semi-hard, stretched curd cheese, produced from raw cow's milk, with natural acidity from fermentation. A sweet and pleasant tsate with a firm straw, ivory paste. Cheese with inedible rind. Treated in surface with aqueous dispersion of vinyl acetate. Additive: E235. Coating agent: refined microcrystalline wax.

Brand	Carron Lodge Ltd.
Manufacturer Product Code	PROVPIC
Product Type	Food
Product Category	Hard Cheese
Storage Type	Chilled
Erudus ID	00cc0f5f334e4498a870bf8b50a1409a
Specification Type	Cheese
Inner Component GTIN	5056114203764
Outer Case GTIN	98001605002845



## INGREDIENTS

**Ingredient Declaration**  
MILK, salt, animal rennet.

## ALLERGENS

Product Contains:

Celery/Celeriac	No
Cereals Containing Gluten	No
Barley	No
Oats	No
Rye	No
Wheat (including Spelt and Khorasan)	No
Crustacea	No
Eggs	No
Fish	No
Lupin	No
Milk	Yes
Molluscs	No

Mustard	No
Nuts (Tree)	No
Almond nuts	No
Brazil nuts	No
Cashew nuts	No
Hazelnuts	No
Macadamia (Queensland) nuts	No
Pecan nuts	No
Pistachio nuts	No
Walnuts	No
Peanuts	No
Sesame Seeds	No
Soybeans	No
Sulphur Dioxide and Sulphites	No

## Additional Allergen Information

The product does not form part of the products covered by the regulation of GM food, as required by EC regulations n° 1830/2003 and 1829/2003, since it is considered as a product derived from a metabolic process that converts raw materials. The product does not contain GMO.

SUPPLEMENTARY  
INGREDIENT  
INFORMATION

Palm Oil	No
Hydrogenated Vegetable Oil/Fat	No
GM Protein/DNA	No

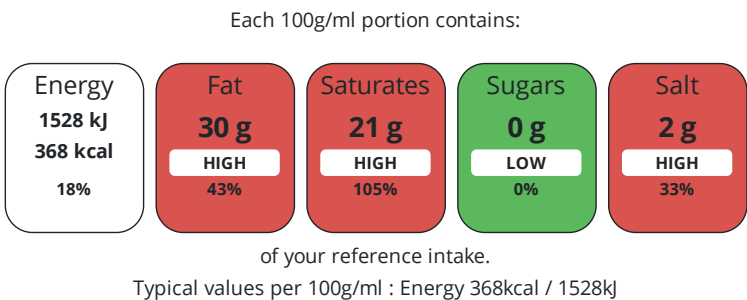
ADDITIVES

Product Contains:			
Artificial Antioxidants	No	Artificial Flavourings	No
Artificial Colours	No	Artificial Preservatives	No
Artificial Flavour Enhancers	No	Artificial Sweeteners	No

DIET  
SUITABILITY

Vegetarian Diet	No	Halal Diet	No
Kosher Diet	No		

NUTRITIONAL  
INFORMATION



Nutrient	per 100g	RI per 100g	per 30g serving	RI per 30g serving
Energy (kJ)	1528 kJ	18%	458.4 kJ	5%
Energy (kcal)	368 kcal	18%	110.4 kcal	6%
Fat	30 g	43%	9 g	13%
of which Saturates	21 g	105%	6.3 g	32%
Carbohydrate	0.6 g	0%	0.2 g	0%
of which Sugars	0 g	0%	-	
Fibre	< 0.5 g		0.2 g	
Protein	24 g	48%	7.2 g	14%
Salt	2 g	33%	0.6 g	10%
Sodium	800 mg		240 mg	

Serving Size	30 g
--------------	------

SUPPLEMENTARY  
NUTRITIONAL  
INFORMATION

Fat Percentage in Dry Matter per 100 g/ml	45 %
---	------

HANDLING &  
STORAGE  
INFORMATION

Directions For Use	~
Storage Instructions	Keep Refrigerated
Shelf Life from Time of Production	45 Days

ACCREDITATIONS/  
CERTIFICATIONS/  
ASSURANCE  
SCHEMES  
ORIGIN

BRCGS Certified	Other Accreditation
Product Country of Origin/Place of Provenance	Italy
Additional Origin Details	PRODUCTION PLANT Brazzale SpA - Via Giovanni XXIII 2, 36030 Monte di Malo (VI) Italia

PRODUCT CHARACTERISTICS

Standards Testing						
Do you undertake trend analysis of microbiological results?		Yes	Is shelf life testing undertaken?			Yes
Microbiological Standards						
Organism	Description	Frequency	Target	Maximum	Sample (g or ml)	
Listeria Monocytogenes (cfu/g or ml)		Monthly	=0	0	25	
Salmonella (cfu/g or ml)		Monthly	=0	0	25	

CONFIGURATION

Case Configuration		Inner Pack Configuration			
Total Quantity of Inner Components in Outer Case		6 Units			
Is the Outer Case Splittable?		No			

PRODUCT WEIGHTS

Inner Component	
Variable Weight Consumer Item	Yes
Outer Case	
Outer Case Gross Weight	2 kg
Outer Case Net Weight	2 kg

PRODUCT DIMENSIONS

Inner Component	
Inner Component Depth	143 mm
Inner Component Width	125 mm
Inner Component Height	125 mm
Outer Case	
Outer Case Depth	490 mm
Outer Case Width	280 mm
Outer Case Height	145 mm

PALLET INFORMATION

Quantity of Cases Per Pallet Layer		6 Cases	Pallet Height		0 MTR
Quantity of Layers Per Pallet		10 Layers			
Quantity of Cases Per Pallet		60 Cases			

PACKAGING

Inner Component Packaging						
Type	Materials	Weight	Recycled Plastic %	Recyclable	Returnable	Composite
Film	Plastic	13 g	- %			
Outer Case Packaging						
Type	Materials	Weight	Recycled Plastic %	Recyclable	Returnable	Composite
Catch Weight	Paper/Cardboard	540 g	- %			

OTHER INFORMATION

Intrastat/Taric Code	04069073	Identification/Health Marks	UK PN 005
Manufacturer Comments			
The company works and operates in accordance with the Community regulations contained in the Hygiene Package Reg. 852/2004 and 853/2004 and associated regulations. The company has adopted a system of Hazard analysis and critical control points (HACCP), in order to identify the critical phases for consumer safety and protection.The internal traceability system, according to Reg. 178/2002 and subsequent updates, ensures the traceability of all products.			

CONTACT  
INFORMATION

Address

Carron Lodge Ltd.  
Park Head Farm, Carron Lane  
Inglewhite  
Preston  
Lancashire  
PR3 2LN  
United Kingdom

P: (Phone) 01995 640352

The information on the [Erudus System](#) has been supplied by the manufacturers of the products and, whilst the owners of the Erudus System take steps to ensure the information is regularly updated, they give no warranty and no guarantee that the information is accurate. Product information and ingredients may change, please always read product labels carefully in addition to using the information provided by Erudus.

We do not accept liability for any inaccuracies or incorrect information contained on this site.  
Please visit <http://www.erudus.com/terms-and-conditions> for full terms and conditions.