

EMM

# Emmental Swiss King Cut 3.5kg

Emmental 4x

PRODUCT DESCRIPTION

With it's characteristic large holes throughout the body of the cheese, this Swiss Emmentaler is mild in flavour with a nutty aroma.

Brand	Carron Lodge Ltd.
Manufacturer Product Code	EMM
Product Type	Food
Product Category	Cheese
Storage Type	Chilled
Erudus ID	d461b5d60b3547128b16c1991cae55d0
Specification Type	Legacy
Inner Component GTIN	97610900131351
Outer Case GTIN	97610900131351



INGREDIENTS

Ingredient Declaration

Unpasteurised **MILK**, Salt, Animal Rennet, Lactic Acid Bacteria, Propionic Acid Bacteria

ALLERGENS

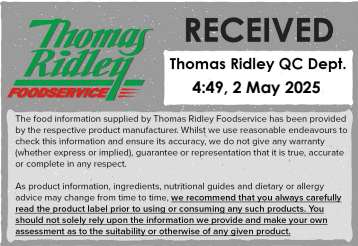
Product Contains:

Celery/Celeriac	No
Cereals Containing Gluten	No
Barley	No
Oats	No
Rye	No
Wheat (including Spelt and Khorasan)	No
Crustacea	No
Eggs	No
Fish	No
Lupin	No
Milk	Yes
Molluscs	No

Mustard	No
Nuts (Tree)	No
Almond nuts	No
Brazil nuts	No
Cashew nuts	No
Hazelnuts	No
Macadamia (Queensland) nuts	No
Pecan nuts	No
Pistachio nuts	No
Walnuts	No
Peanuts	No
Sesame Seeds	No
Soybeans	No
Sulphur Dioxide and Sulphites	No

SUPPLEMENTARY  
INGREDIENT  
INFORMATION

Palm Oil	No
Hydrogenated Vegetable Oil/Fat	No
GM Protein/DNA	No



ADDITIVES

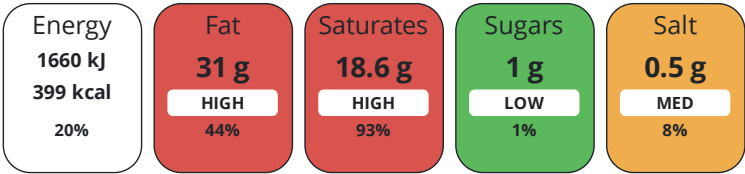
Product Contains:

Artificial Antioxidants	No	Artificial Flavourings	No
Artificial Colours	No	Artificial Preservatives	No
Artificial Flavour Enhancers	No	Artificial Sweeteners	No
Suitable for Coeliacs	No	Halal Diet	No
Kosher Diet	No	Vegetarian Diet	No
Vegan Diet	No		

DIET  
SUITABILITY

NUTRITIONAL  
INFORMATION

Each 100g/ml portion contains:



of your reference intake.

Typical values per 100g/ml : Energy 399kcal / 1660kJ

Nutrient	per 100g/ml	RI per 100g/ml	per 30g/ml serving	RI per 30g/ml serving
Energy (kJ)	1660 kJ	20%	498 kJ	6%
Energy (kcal)	399 kcal	20%	119.7 kcal	6%
Fat	31 g	44%	9.3 g	13%
of which Saturates	18.6 g	93%	5.6 g	28%
Carbohydrate	1 g	0%	0.3 g	0%
of which Sugars	1 g	1%	0.3 g	0%
Protein	29 g	58%	8.7 g	17%
Salt	0.5 g	8%	0.2 g	3%
Sodium	170 mg		51 mg	
Serving Size	30 g			

VITAMINS AND  
MINERALS

Nutrient	per 100g/ml	RI per 100g/ml	per 30g/ml serving	RI per 30g/ml serving
Vitamin A	280 µg	35%	84 µg	11%
Calcium	1030 mg	129%	309 mg	39%
Iron	0.35 mg	3%	0.1 mg	1%

SUPPLEMENTARY  
NUTRITIONAL  
INFORMATION

Cholesterol per 100 g/ml (UK/FR)	0.84 g
Trans Fats per 100 g/ml	1.42 g
Fat Percentage in Dry Matter per 100 g/ml	45 %

HANDLING &  
STORAGE  
INFORMATION

Directions For Use	~
Storage Instructions	Keep Refrigerated
Shelf Life from Time of Production	180 Days

ORIGIN	Product Country of Origin		Other			
	Additional Origin Details					
PRODUCT CHARACTERISTICS	Switzerland					
	Standards Testing					
	Do you undertake trend analysis of microbiological results?		Yes	Is shelf life testing undertaken?		Yes
	Microbiological Standards					
	Organism	Description	Frequency	Target	Maximum	Sample (g or ml)
	E. Coli (cfu/g or ml)		Every Batch	<10	100	-
	Listeria Monocytogenes (cfu/g or ml)		Every Batch	=0	1	25
	Staphylococcus Aureus (cfu/g or ml)		Every Batch	<10	100	-
	Salmonella (cfu/g or ml)		Every Batch	=0	1	25
	Analytical Standards					
	Test	Description	Frequency	Target	Range	Sample (g or ml)
	pH		Every Batch	<5.8	5.3 to 5.8	-
CONFIGURATION	Case Configuration			Inner Pack Configuration		
	Total Quantity of Inner Components in Outer Case		4 Units			
	Is the Outer Case Splittable?		Yes			
PRODUCT WEIGHTS	Inner Component					
	Variable Weight Consumer Item		No			
	Weight/Volume					
PRODUCT DIMENSIONS	3.5kg					
	Outer Case					
	Outer Case Gross Weight		13.2 kg			
	Outer Case Net Weight		12.8 kg			
	Inner Component					
	Inner Component Depth		26 mm			
	Inner Component Width		8 mm			
Inner Component Height		19 mm				
PALLET INFORMATION	Outer Case					
	Outer Case Depth		400 mm			
	Outer Case Width		300 mm			
	Outer Case Height		210 mm			
	Quantity of Cases Per Pallet Layer		8 Cases	Pallet Height		0 MTR
	Quantity of Layers Per Pallet		7 Layers			
	Quantity of Cases Per Pallet		56 Cases			
PACKAGING	Inner Component Packaging					
	Type	Materials	Weight	Recycled Plastic %	Recyclable	Returnable Composite
	Other	Plastic	18 g	- %		

OTHER INFORMATION	Outer Case Packaging						
	Type	Materials	Weight	Recycled Plastic %	Recyclable	Returnable	Composite
	Case	Paper/Cardboard	400 g	- %			
CONTACT INFORMATION					Identification/Health Marks		CH2038
	Manufacturer Comments						
	~						
CONTACT INFORMATION	Address						
	Carron Lodge Ltd.						
	Park Head Farm, Carron Lane						
	Inglewhite						
	Preston						
	Lancashire						
	PR3 2LN						
CONTACT INFORMATION	United Kingdom						
	P: (Phone) 01995 640352						

The information on the [Erudus System](#) has been supplied by the manufacturers of the products and, whilst the owners of the Erudus System take steps to ensure the information is regularly updated, they give no warranty and no guarantee that the information is accurate. Product information and ingredients may change, please always read product labels carefully in addition to using the information provided by Erudus.

We do not accept liability for any inaccuracies or incorrect information contained on this site.  
Please visit <http://www.erudus.com/terms-and-conditions> for full terms and conditions.