

ChangedSep 23, 2024 13:58

ReviewedSep 23, 2024 13:58

Erudus IDd3344487ad3e487b96885337f5fc2bc1

Version2.0

Gouda Cheese Slices (6x1Kg)

Gouda Cheese Slices (6x1kg) 6x1000g

PRODUCT DESCRIPTION

20g Gouda Cheese slices packed in a 1kg tray. Packed 6x1Kg

Brand	Extens Foods Ltd
Manufacturer Product Code	GUSL2061EX
Effective Date	Sep 23, 2024
Product Type	Food
Product Category	Other Dairy
Storage Type	Chilled
Erudus ID	d3344487ad3e487b96885337f5fc2bc1
Specification Type	Dairy

Inner Component GTIN	5060227270582
Inner Pack GTIN	5060227270582
Outer Case GTIN	5060227270599



INGREDIENTS

Ingredient Declaration

Gouda Cheese(MILK),Pasteurised Cow`s MILK, Salt, Starter Culture, Non Animal Rennet.

ALLERGENS

Product Contains:

Celery/Celeriac	No
Cereals Containing Gluten	No
Barley	No
Oats	No
Rye	No
Wheat (including Spelt and Khorasan)	No
Crustacea	No
Eggs	No
Fish	No
Lupin	No
Milk	Yes
Molluscs	No

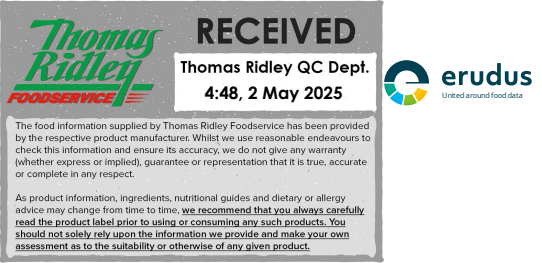
Mustard	No
Nuts (Tree)	No
Almond nuts	No
Brazil nuts	No
Cashew nuts	No
Hazelnuts	No
Macadamia (Queensland) nuts	No
Pecan nuts	No
Pistachio nuts	No
Walnuts	No
Peanuts	No
Sesame Seeds	No
Soybeans	No
Sulphur Dioxide and Sulphites	No

Allergen Statement On Pack

Contains MILK

Additional Allergen Information

Contains MILK



SUPPLEMENTARY
INGREDIENT
INFORMATION

Palm Oil	No
Hydrogenated Vegetable Oil/Fat	No
GM Protein/DNA	No

ADDITIVES

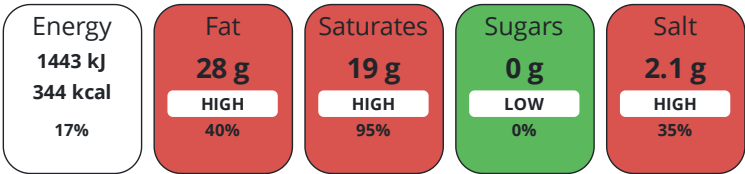
Product Contains:			
Artificial Antioxidants	No	Artificial Flavourings	No
Artificial Colours	No	Artificial Preservatives	No
Artificial Flavour Enhancers	No	Artificial Sweeteners	No

DIET
SUITABILITY

Vegetarian Diet	Suitable for	Halal Diet	No
Kosher Diet	No		

NUTRITIONAL
INFORMATION

Each 100g/ml portion contains:



of your reference intake.

Typical values per 100g/ml : Energy 344kcal / 1443kJ

Nutrient	per 100g	RI per 100g	per 30g serving	RI per 30g serving
Energy (kJ)	1443 kJ	17%	432.9 kJ	5%
Energy (kcal)	344 kcal	17%	103.2 kcal	5%
Fat	28 g	40%	8.4 g	12%
of which Saturates	19 g	95%	5.7 g	29%
Carbohydrate	0 g	0%	-	
of which Sugars	0 g	0%	-	
Protein	23 g	46%	6.9 g	14%
Salt	2.1 g	35%	0.6 g	10%
Sodium	720 mg		216 mg	

Serving Size	30 g
--------------	------

Source of Nutritional Information Calculation from known/accepted datasets

SUPPLEMENTARY
NUTRITIONAL
INFORMATION

HANDLING &
STORAGE
INFORMATION

Directions For Use	
Keep Refrigerated. Once opened use within 3 days.	
Storage Instructions	
Keep Refrigerated.	
Storage Instructions After Opening	
Keep Refrigerated. Once opened use within 3 days.	
Shelf Life from Time of Production	56 Days
Shelf Life From Opening	3 Days

ACCREDITATIONS/
CERTIFICATIONS/
ASSURANCE
SCHEMES

BRCGS Certified	Red Tractor
-----------------	-------------

ORIGIN

Product Country of Origin/Place of Provenance

Netherlands (the), United Kingdom

PRODUCT CHARACTERISTICS

Additional Origin Details

Country of Origin of MILK: The Netherlands.

Standards Testing

Do you undertake trend analysis of microbiological results?

No

Is shelf life testing undertaken?

Yes

Microbiological Standards

Organism	Description	Frequency	Target	Maximum	Sample (g or ml)
Coliforms (cfu/g or ml)		Weekly	<20	100	100
E. Coli (cfu/g or ml)		Weekly	<10	10	100
Enterobacteriaceae (cfu/g or ml)		Weekly	<20	100	100
Listeria SPP (cfu/g or ml)	Absent in 25g	Weekly	<0	0	25
Listeria Monocytogenes (cfu/g or ml)	Absent in 25g	Weekly	<0	0	25
Staphylococcus Aureus (cfu/g or ml)		Weekly	<20	20	100
Salmonella (cfu/g or ml)	Absent in 25g	Weekly	<0	0	25
Yeast (cfu/g or ml)		Weekly	<500	10000	100
Moulds (cfu/g or ml)		Weekly	<500	1000	100
Coagulase-positive Staphylococci (cfu/g or ml)		Weekly	<20	20	100

Analytical Standards

Test	Description	Frequency	Target	Range	Sample (g or ml)
Fat Content (%)		Every Batch	=49	48 to 50	100
Moisture (%)		Every Batch	=43	41.5 to 44.5	100
pH		Every Batch	=5.3	5.1 to 5.5	100
Salt Content (%)		Every Batch	=3	2.5 to 3.5	100

Physical Standards

Test	Description	Frequency	Target	Range	Sample (g or ml)
Dimensions Height (mm)		Every Batch	=90	85 to 95	100
Dimensions Length (mm)		Every Batch	=90	85 to 95	100
Weight (g)		Every Batch	=20	18 to 22	100

SUPPLEMENTARY INFORMATION

Milk Type

Cow

Pasteurised

Yes

HAZARD CONTROLS

Metal Detection

Yes

CONFIGURATION

Case Configuration

Inner Pack Configuration

Total Quantity of Inner Components in Outer Case

6 Units

Is Inner Pack Splittable?

No

Total Quantity of Inner Packs in Outer Case

6 Units

©2024 ERUDUS Ltd. All rights reserved.

3/5

Sep 23, 2024 15:51

PRODUCT WEIGHTS

Inner Component	
Variable Weight Consumer Item	No
Inner Component Weight	1000 g
e mark	Yes
Outer Case	
Outer Case Gross Weight	6.39 kg
Outer Case Net Weight	6 kg

The information on the [Erudus System](#) has been supplied by the manufacturers of the products and, whilst the owners of the Erudus System take steps to ensure the information is regularly updated, they give no warranty and no guarantee that the information is accurate. Product information and ingredients may change, please always read product labels carefully in addition to using the information provided by Erudus.

We do not accept liability for any inaccuracies or incorrect information contained on this site.
Please visit <http://www.erudus.com/terms-and-conditions> for full terms and conditions.