

Changed Apr 23, 2025 08:54

Reviewed Apr 23, 2025 08:54

Erudus ID 17f71063b7a04b04ab7205850844847d

Version 1.0

This specification is published by [Erudus](#) for Caterfood Buying Group

Caterfood Premium Ultra Crunch Fries 7 mm 4X2.25KG (84)

Shoestrings 7-7 Mm Coated Ultra Crunch Prefried And Frozen 4x2.25kg

PRODUCT DESCRIPTION

Shoestrings 7-7 mm Coated Ultra Crunch prefried and frozen

Brand	Caterfood Buying Group
Manufacturer Product Code	1039397-7B
Product Type	Food
Product Category	Potato Products
Storage Type	Frozen
Erudus ID	17f71063b7a04b04ab7205850844847d
Specification Type	Fruit and Vegetables

Inner Component GTIN	5056750402408
Outer Case GTIN	5056750402392



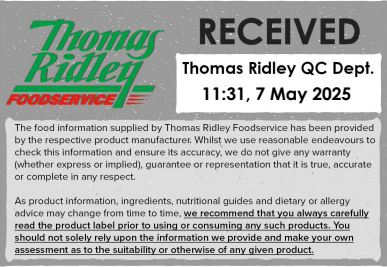
INGREDIENTS

Ingredient Declaration
Potatoes (84%), sunflower oil, rice flour, modified potato starch, maize flour, maize starch, salt, potato dextrin, raising agents E450i-E500ii, thickener E415, spice.

ALLERGENS

<i>Product Contains:</i>			
Celery/Celeriac	No	Mustard	No
Cereals Containing Gluten	No	Nuts (Tree)	No
Barley	No	Almond nuts	No
Oats	No	Brazil nuts	No
Rye	No	Cashew nuts	No
Wheat (including Spelt and Khorasan)	No	Hazelnuts	No
Crustacea	No	Macadamia (Queensland) nuts	No
Eggs	No	Pecan nuts	No
Fish	No	Pistachio nuts	No
Lupin	No	Walnuts	No
Milk	No	Peanuts	No
Molluscs	No	Sesame Seeds	No
		Soybeans	No
		Sulphur Dioxide and Sulphites	No

FREE FROM CLAIMS	Gluten-Free	Yes
SUPPLEMENTARY INGREDIENT INFORMATION	Palm Oil	No
	Hydrogenated Vegetable Oil/Fat	No
	GM Protein/DNA	No



ADDITIVES

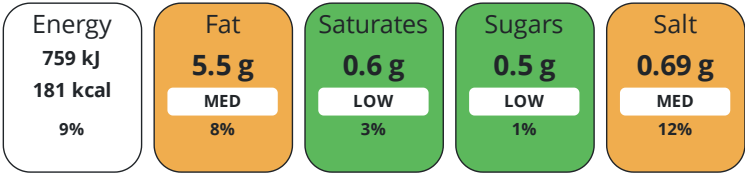
Product Contains:

Artificial Antioxidants	No	Artificial Flavourings	No
Artificial Colours	No	Artificial Preservatives	No
Artificial Flavour Enhancers	No	Artificial Sweeteners	No
Vegan Diet	Suitable for	Vegetarian Diet	Suitable for
Halal Diet	Suitable for	Kosher Diet	No

DIET
SUITABILITY

NUTRITIONAL
INFORMATION

Each 100g/ml portion contains:



of your reference intake.

Typical values per 100g/ml : Energy 181kcal / 759kj

Nutrient	per 100g	RI per 100g	per 100g serving	RI per 100g serving
Energy (kJ)	759 kJ	9%	759 kJ	9%
Energy (kcal)	181 kcal	9%	181 kcal	9%
Fat	5.5 g	8%	5.5 g	8%
of which Saturates	0.6 g	3%	0.6 g	3%
Carbohydrate	29 g	11%	29 g	11%
of which Sugars	0.5 g	1%	0.5 g	1%
Fibre	2.3 g		2.3 g	
Protein	2.6 g	5%	2.6 g	5%
Salt	0.69 g	12%	0.7 g	12%
Sodium	276 mg		276 mg	
Serving Size	100 g			
Number of Servings	22.5 Servings			

SUPPLEMENTARY
NUTRITIONAL
INFORMATION

HANDLING &
STORAGE
INFORMATION

Directions For Use

Frozen product (-18°C) : Fryer : 2-3 minutes at 175°C/347°F Oven : 10-15 minutes at 200°C/392°F Frozen product (-18°C) - Portion of 400 g : Air Fryer : 10-12 minutes at 200°C/392°F

Storage Instructions

Ice box of the fridge * (-6°C): 1 week Freezer *** (-18°C): Several months

Storage Instructions After Opening

Do not refreeze once thawed.

Shelf Life from Time of Production	720 Days
BRCGS Certified	
Organic	
Sedex	

ISO 14001 (Environmental Management)
Roundtable of Sustainable Palm Oil (RSPO)

ACCREDITATIONS/
CERTIFICATIONS/
ASSURANCE
SCHEMES

ORIGIN	Product Country of Origin		Belgium			
	Additional Origin Details					
	Origin of potatoes : Belgium, France, Netherlands, Germany.					
PRODUCT CHARACTERISTICS	Origin of the Primary Ingredient		Belgium, France, Germany, Netherlands (the)			
	Standards Testing					
	Do you undertake trend analysis of microbiological results?		Yes	Is shelf life testing undertaken?		Yes
	Microbiological Standards					
	Organism	Description	Frequency	Target	Maximum	Sample (g or ml)
	Bacillus Cereus (cfu/g or ml)		Daily	<100	1000	1
	Coliforms (cfu/g or ml)		Daily	<100	1000	1
	E. Coli (cfu/g or ml)		Daily	<10	100	1
	Listeria Monocytogenes (cfu/g or ml)		Daily	<10	100	1
	Staphylococcus Aureus (cfu/g or ml)		Daily	<10	100	1
	Total Viable Count (TVC) (cfu/g or ml)		Daily	<10000	100000	1
	Salmonella (cfu/g or ml)		Monthly	=0	0	25
	Yeast (cfu/g or ml)		Daily	<100	1000	1
	Moulds (cfu/g or ml)		Daily	<100	1000	1
	CONFIGURATION	SUPPLEMENTARY INFORMATION				
Fried During Manufacture		Yes	Closure Type		Thermal	
HAZARD CONTROLS						
Metal Detection		Yes	Optical Sorting		Yes	
Magnets		Yes				
PRODUCT WEIGHTS	Case Configuration			Inner Pack Configuration		
	Variable Inner Components in Outer Case		No			
	Total Quantity of Inner Components in Outer Case		4 Units			
	Is the Outer Case Splittable?		Yes			
	Inner Component					
PRODUCT WEIGHTS	Variable Weight Consumer Item		No			
	Inner Component Weight		2.25 kg			
	e mark		Yes			
	Outer Case					
	Outer Case Gross Weight		9.22 kg			
	Outer Case Net Weight		9 kg			

PRODUCT
DIMENSIONS

Inner Component	
Inner Component Depth	460 mm
Inner Component Width	353 mm
Inner Component Height	50 mm
Outer Case	
Outer Case Depth	380 mm
Outer Case Width	245 mm
Outer Case Height	240 mm

PALLET
INFORMATION

Quantity of Cases Per Pallet Layer	12 Cases	Pallet Type	UK Standard Pallet
Quantity of Layers Per Pallet	7 Layers	Pallet Height	1.91 MTR
Quantity of Cases Per Pallet	84 Cases	Pallet Gross Weight	805 kg

PACKAGING

Inner Component Packaging						
Type	Materials	Weight	Recycled Plastic %	Recyclable	Returnable	Composite
Bag	Plastic / LDPE (Low Density Polyethylene)	10.19 g	- %	Yes	No	
Outer Case Packaging						
Type	Materials	Weight	Recycled Plastic %	Recyclable	Returnable	Composite
Case	Paper/Cardboard / Cardboard	391 g	- %	Yes	No	
Transport Packaging						
Type	Materials	Weight	Recycled Plastic %	Recyclable	Returnable	Composite
Pallet Wrap	Plastic	222 g	- %	Yes	No	
Pallet	Wood	30000 g	- %	Yes	Yes	

OTHER
INFORMATION

Intrastat/Taric Code	2004101000	Identification/Health Marks	AERHAI000809
Commodity Code	2004101000		

CONTACT
INFORMATION

ADDRESS
Caterfood Buying Group BFS Group Ltd 814 Leigh Road Slough Berkshire SL1 4BD United Kingdom

The information on the [Erudus System](#) has been supplied by the manufacturers of the products and, whilst the owners of the Erudus System take steps to ensure the information is regularly updated, they give no warranty and no guarantee that the information is accurate. Product information and ingredients may change, please always read product labels carefully in addition to using the information provided by Erudus.

We do not accept liability for any inaccuracies or incorrect information contained on this site.
Please visit <http://www.erudus.com/terms-and-conditions> for full terms and conditions.