

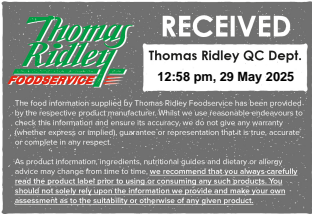
# VIOLIFE MAT CHED FLV SLS 12x200 gr RF EN

Food Preparation With Coconut Oil 12x200g

## PRODUCT DESCRIPTION

Food preparation with coconut oil / suitable for Vegans. Product with creamy taste, pale yellow colour and firm texture.

Brand	Violife
Manufacturer Product Code	91302205
Product Type	Food
Product Category	Vegan Cheese and Dairy Substitutes
Storage Type	Chilled
Erudus ID	97aefd2a633e44f9b543f4f9b745eb5b
Specification Type	Alternatives (Vegetarian and Vegan)



Inner Component GTIN	5202390016912
Outer Case GTIN	25202390016916



GLUTEN  
FREE



LACTOSE  
FREE



MILK  
FREE



NUT  
FREE



SOYA  
FREE



Certified



Certified



Certified



Suitable for

## INGREDIENTS

**Ingredient Declaration**  
Water, Modified Starch, Coconut Oil (23%), Sea Salt, Flavourings, Rowanberry extract, Acidity regulator: Citric acid, Olive Extract, Colour: B- Carotene, Vitamin B12

## ALLERGENS

Product Contains:	
Celery/Celeriac	No
Cereals Containing Gluten	No
Barley	No
Oats	No
Rye	No
Wheat (including Spelt and Khorasan)	No
Crustacea	No
Eggs	No
Fish	No
Lupin	No
Milk	No
Molluscs	No
Mustard	No
Nuts (Tree)	No
Almond nuts	No
Brazil nuts	No
Cashew nuts	No
Hazelnuts	No
Macadamia (Queensland) nuts	No
Pecan nuts	No
Pistachio nuts	No
Walnuts	No
Peanuts	No
Sesame Seeds	No
Soybeans	No
Sulphur Dioxide and Sulphites	No

**Additional Allergen Information**  
N/A

FREE FROM CLAIMS

Gluten-Free	Yes
Free From Lactose	Yes
Free From Milk	Yes

Free From Nuts	Yes
Free From Soybeans	Yes

SUPPLEMENTARY INGREDIENT INFORMATION

Palm Oil	No
Hydrogenated Vegetable Oil/Fat	No
GM Protein/DNA	No

Alcoholic Strength %Vol (ABV)	0 % Vol
CBD Concentration per Unit	0 mg

ADDITIVES

Product Contains:	
Artificial Antioxidants	No
Artificial Colours	No
Artificial Flavour Enhancers	No

Artificial Flavourings	No
Artificial Preservatives	No
Artificial Sweeteners	No

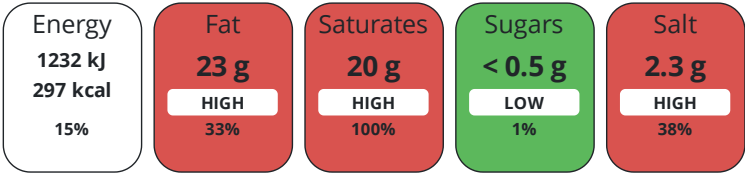
DIET SUITABILITY

Vegan Diet	Certified
Halal Diet	Certified

Vegetarian Diet	Suitable for
Kosher Diet	Certified

NUTRITIONAL INFORMATION

Each 100g/ml portion contains:



of your reference intake.

Typical values per 100g/ml : Energy 297kcal / 1232kJ

Nutrient	per 100g	RI per 100g	per 20g of prepared product
Energy (kJ)	1232 kJ	15%	-
Energy (kcal)	297 kcal	15%	-
Fat	23 g	33%	-
of which Saturates	20 g	100%	-
Carbohydrate	22 g	8%	-
of which Sugars	< 0.5 g	1%	-
Fibre	< 0.5 g		-
Protein	0.1 g	0%	-
Salt	2.3 g	38%	-
Sodium	920 mg		-

Number of Servings	10 Servings
--------------------	-------------

Source of Nutritional Information	Calculation from known/accepted datasets
-----------------------------------	--

VITAMINS AND MINERALS

Nutrient	per 100g	RI per 100g	per 20g of prepared product
Vitamin B12	2.5 µg	100%	-

SUPPLEMENTARY NUTRITIONAL INFORMATION

HFSS (HIGH IN FAT, SALT AND SUGAR)

HFSS Status	Not Applicable (out of scope, exempt)
-------------	---------------------------------------

HANDLING &  
STORAGE  
INFORMATION

Directions For Use

Ready to eat

Storage Instructions

Keep refrigerated +2°C - +8°C. Do not freeze

Storage Instructions After Opening

Keep refrigerated +2°C - +8°C.

Shelf Life from Time of Production	300 Days
Shelf Life From Opening	7 Days

ACCREDITATIONS/  
CERTIFICATIONS/  
ASSURANCE  
SCHEMES

IFS Food Standard	Sedex
The Vegan Society	BRCGS Certified
BRCGS Food Safety	

ORIGIN

Product Country of Origin/Place of Provenance	Greece
Additional Origin Details	Drama

PRODUCT  
CHARACTERISTICS

Standards Testing					
Do you undertake trend analysis of microbiological results?	Yes	Is shelf life testing undertaken?	Yes		
Microbiological Standards					
Organism	Description	Frequency	Target	Maximum	Sample (g or ml)
Coliforms (cfu/g or ml)	AFNOR n° BIO 12/17 – 12/05	Every Batch	<10	10	1000
E. Coli (cfu/g or ml)	AFNOR n° BIO 12/13 – 02/05	Every Batch	<10	10	1000
Listeria SPP (cfu/g or ml)	AFNOR n° BIO 12/18 – 03/06	Every Batch	=0	0	1000
Listeria Monocytogenes (cfu/g or ml)	AFNOR n° BIO 12/18 – 03/06	Every Batch	=0	0	1000
Staphylococcus Aureus (cfu/g or ml)	AFNOR n° BIO 12/28 – 04/10	Every Batch	<100	100	1000
Total Viable Count (TVC) (cfu/g or ml)	AFNOR n° BIO 12/35 – 05/13	Every Batch	<10000	10000	1000
Salmonella (cfu/g or ml)	AFNOR n° BIO 12/16 – 09/05 cfu/125g	Every Batch	=0	0	1000
Yeast (cfu/g or ml)	AOAC RI 041001	Every Batch	<10	10	1000
Moulds (cfu/g or ml)	AOAC RI 041001	Every Batch	<10	10	1000

CONFIGURATION

Case Configuration	Inner Pack Configuration
Total Quantity of Inner Components in Outer Case	12 Units
Is the Outer Case Splittable?	No

PRODUCT  
WEIGHTS

Inner Component	
Variable Weight Consumer Item	No
Inner Component Weight	200 g
e mark	Yes
Outer Case	
Outer Case Gross Weight	2.67 kg
Outer Case Net Weight	2.4 kg

PRODUCT  
DIMENSIONS

Inner Component	
Inner Component Depth	132 mm
Inner Component Width	127 mm
Inner Component Height	27 mm
Outer Case	
Outer Case Depth	327 mm
Outer Case Width	130 mm
Outer Case Height	147 mm

PALLET  
INFORMATION

Quantity of Cases Per Pallet Layer	27 Cases	Pallet Type	UK Standard Pallet
Quantity of Layers Per Pallet	11 Layers	Pallet Height	1.78 MTR
Quantity of Cases Per Pallet	297 Cases	Pallet Gross Weight	822 kg

PACKAGING

Inner Component Packaging						
Type	Materials	Weight	Recycled Plastic %	Recyclable	Returnable	Composite
Tray	Plastic / PE (Polyethylene)	3 g	- %	Yes	No	No
Sleeve	Paper/Cardboard / Cardboard	4 g	- %	Yes	No	No
Outer Case Packaging						
Type	Materials	Weight	Recycled Plastic %	Recyclable	Returnable	Composite
Case	Paper/Cardboard / Cardboard	130 g	- %	Yes	No	No
Transport Packaging						
Type	Materials	Weight	Recycled Plastic %	Recyclable	Returnable	Composite
Pallet	Wood	28000 g	- %	No	No	

OTHER  
INFORMATION

Commodity Code	2106909849
----------------	------------

Manufacturer Comments

Packaged in a protective atmosphere.

CONTACT  
INFORMATION

Address	Technical Contact
Upfield Foods UK	Alessandra Gangemi
Upfield UK Services Limited	Technical Specialist
14-21 Rushworth Street	alessandra.gangemi@florafg.com
London	
London	
SE1 0RB	
United Kingdom	
P: (Phone) TBC	
Complaints Contact	
Paula Castro	
Technical Manager	
paula.dejesuscastro@florafg.com	
P: (Phone) 07557549204	

The information on the [Erudus System](#) has been supplied by the manufacturers of the products and, whilst the owners of the Erudus System take steps to ensure the information is regularly updated, they give no warranty and no guarantee that the information is accurate. Product information and ingredients may change, please always read product labels carefully in addition to using the information provided by Erudus.

We do not accept liability for any inaccuracies or incorrect information contained on this site.  
Please visit <http://www.erudus.com/terms-and-conditions> for full terms and conditions.