

DAPPLE

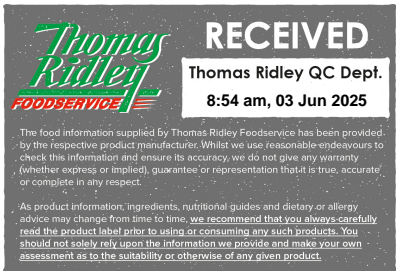
Norfolk Dapple 2.7kg

Norfolk Dapple 2.7kg

PRODUCT DESCRIPTION

Norfolk Dapple is produced with unpasteurised cows’ milk cheese by Ellie Betts of Ferndale Farm at Little Barningham. The cheese is a mature, clothbound, cheddar-type, which develops its distinctive dappled rind as it ripens. It has a hard, dry texture and a full flavour. It has won both silver and bronze medals in the British Cheese Awards

Brand	Carron Lodge Ltd.
Manufacturer Product Code	DAPPLE
Product Type	Food
Product Category	Cheese
Storage Type	Chilled
Erudus ID	c7f7c1a0ecae471f887553fc02f22948
Specification Type	Legacy
Inner Component GTIN	5056114202965
Outer Case GTIN	5056114202965



INGREDIENTS

Ingredient Declaration
Unpasteurised Cows **MILK**, Salt, Animal Rennet, Starter Culture

ALLERGENS

Product Contains:

Celery/Celeriac	No
Cereals Containing Gluten	No
Barley	No
Oats	No
Rye	No
Wheat (including Spelt and Khorasan)	No
Crustacea	No
Eggs	No
Fish	No
Lupin	No
Milk	Yes
Molluscs	No

Mustard	No
Nuts (Tree)	No
Almond nuts	No
Brazil nuts	No
Cashew nuts	No
Hazelnuts	No
Macadamia (Queensland) nuts	No
Pecan nuts	No
Pistachio nuts	No
Walnuts	No
Peanuts	No
Sesame Seeds	No
Soybeans	No
Sulphur Dioxide and Sulphites	No

SUPPLEMENTARY
INGREDIENT
INFORMATION

Palm Oil	No
Hydrogenated Vegetable Oil/Fat	No
GM Protein/DNA	No

ADDITIVES

Product Contains:

Artificial Antioxidants	No
Artificial Colours	No
Artificial Flavour Enhancers	No

Artificial Flavourings	No
Artificial Preservatives	No
Artificial Sweeteners	No

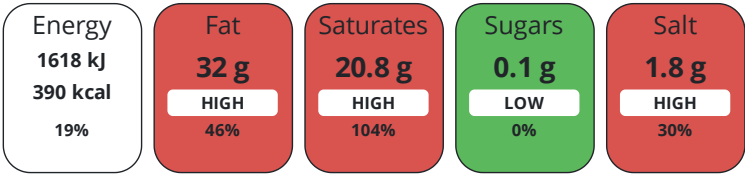
DIET
SUITABILITY

Suitable for Coeliacs	No
Kosher Diet	No
Vegan Diet	No

Halal Diet	No
Vegetarian Diet	No

NUTRITIONAL
INFORMATION

Each 100g/ml portion contains:



of your reference intake.

Typical values per 100g/ml : Energy 390kcal / 1618kJ

Nutrient	per 100g/ml	RI per 100g/ml	per 30g/ml serving	RI per 30g/ml serving
Energy (kJ)	1618 kJ	19%	485.4	6%
Energy (kcal)	390 kcal	20%	117	6%
Fat	32 g	46%	9.6 g	14%
of which Saturates	20.8 g	104%	6.24 g	31%
of which Mono-unsaturates	8.7 g		2.61 g	
of which Polyunsaturates	1.2 g		0.36 g	
Carbohydrate	0.1 g	0%	0.03 g	0%
of which Sugars	0.1 g	0%	0.03 g	0%
Fibre	0 g		0 g	
Protein	25.5 g	51%	7.65 g	15%
Salt	1.8 g	30%	0.54 g	9%
Sodium	720 mg		216 mg	

Serving Size	30 g
--------------	------

SUPPLEMENTARY
NUTRITIONAL
INFORMATION

Trans Fats per 100 g/ml	0 g
Fat Percentage in Dry Matter per 100 g/ml	48 %

HANDLING &
STORAGE
INFORMATION

Directions For Use

~

Storage Instructions

Keep Refrigerated

Shelf Life from Time of Production	50 Days
------------------------------------	---------

ORIGIN

Product Country of Origin	United Kingdom
Additional Origin Details	Norfolk

PRODUCT
CHARACTERISTICS

Standards Testing

CONFIGURATION	Case Configuration		Inner Pack Configuration				
PRODUCT WEIGHTS	Total Quantity of Inner Components in Outer Case		1 Units				
	Is the Outer Case Splittable?		No				
	Inner Component						
	Variable Weight Consumer Item		No				
	Weight/Volume						
	2.7kg						
	Outer Case						
PRODUCT DIMENSIONS	Outer Case Gross Weight		2.7 kg				
	Outer Case Net Weight		2.7 kg				
	Inner Component						
	Inner Component Depth		0 mm				
	Inner Component Width		0 mm				
	Inner Component Height		0 mm				
	Outer Case						
PALLET INFORMATION	Outer Case Depth		0 mm				
	Outer Case Width		0 mm				
	Outer Case Height		0 mm				
	Quantity of Cases Per Pallet Layer		1 Cases		Pallet Height		0 MTR
	Quantity of Layers Per Pallet		1 Layers		Pallet Gross Weight		0 kg
	Quantity of Cases Per Pallet		1 Cases				
	Inner Component Packaging						
PACKAGING	Type	Materials	Weight	Recycled Plastic %	Recyclable	Returnable	Composite
	Poly Treated PET/PE	Plastic	18 g	- %			
OTHER INFORMATION	Identification/Health Marks					GB NN 105	
	Manufacturer Comments						
	~						
CONTACT INFORMATION	Address						
	Carron Lodge Ltd.						
	Park Head Farm, Carron Lane						
	Inglewhite						
	Preston						
	Lancashire						
	PR3 2LN						
	United Kingdom						
	P: (Phone) 01995 640352						

The information on the [Erudus System](#) has been supplied by the manufacturers of the products and, whilst the owners of the Erudus System take steps to ensure the information is regularly updated, they give no warranty and no guarantee that the information is accurate. Product information and ingredients may change, please always read product labels carefully in addition to using the information provided by Erudus.

We do not accept liability for any inaccuracies or incorrect information contained on this site.
Please visit <http://www.erudus.com/terms-and-conditions> for full terms and conditions.