

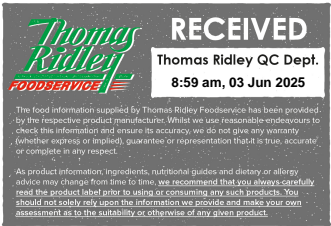
# BV Dairy Clotted Cream 1kg

Clotted Cream 6x

## PRODUCT DESCRIPTION

Clotted Cream, with its distinctive crusted surface, is produced by heating and cooling cream at specific temperatures under controlled conditions. It is traditionally associated with Britain's West Country where the famous 'cream tea' remains very popular. Our original product, we have been making Clotted Cream since 1958 and it has won many awards for the dairy. We have developed a process to give our clotted cream an extended shelf life of up to 28 days . It must be kept in cooled storage at 0° to 5°c.

Brand	Carron Lodge Ltd.
Manufacturer Product Code	CLOTBV
Product Type	Food
Product Category	Cream
Storage Type	Chilled
Erudus ID	a3a112a85cd14fe4bb722dd4c8ab6259
Specification Type	Legacy
Inner Component GTIN	5018911110508
Outer Case GTIN	5018911110508



## INGREDIENTS

**Ingredient Declaration**  
Clotted Cream (**MILK**)

## ALLERGENS

Product Contains:

Celery/Celeriac	No
Cereals Containing Gluten	No
Barley	No
Oats	No
Rye	No
Wheat (including Spelt and Khorasan)	No
Crustacea	No
Eggs	No
Fish	No
Lupin	No
Milk	Yes
Molluscs	No

Mustard	No
Nuts (Tree)	No
Almond nuts	No
Brazil nuts	No
Cashew nuts	No
Hazelnuts	No
Macadamia (Queensland) nuts	No
Pecan nuts	No
Pistachio nuts	No
Walnuts	No
Peanuts	No
Sesame Seeds	No
Soybeans	No
Sulphur Dioxide and Sulphites	No

## SUPPLEMENTARY INGREDIENT INFORMATION

Palm Oil	No
Hydrogenated Vegetable Oil/Fat	No
GM Protein/DNA	No

ADDITIVES

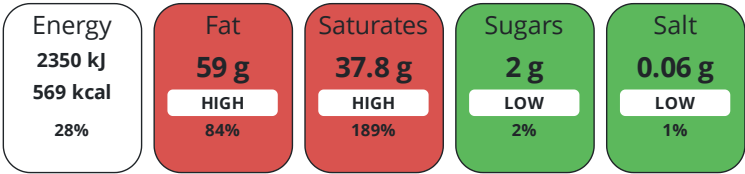
Product Contains:

Artificial Antioxidants	No	Artificial Flavourings	No
Artificial Colours	No	Artificial Preservatives	No
Artificial Flavour Enhancers	No	Artificial Sweeteners	No
Suitable for Coeliacs	No	Halal Diet	No
Kosher Diet	No	Vegetarian Diet	Suitable for
Vegan Diet	No		

DIET  
SUITABILITY

NUTRITIONAL  
INFORMATION

Each 100g/ml portion contains:



of your reference intake.

Typical values per 100g/ml : Energy 569kcal / 2350kJ

Nutrient	per 100g/ml	RI per 100g/ml
Energy (kJ)	2350 kJ	28%
Energy (kcal)	569 kcal	28%
Fat	59 g	84%
of which Saturates	37.8 g	189%
of which Mono-unsaturates	18 g	
of which Polyunsaturates	1.5 g	
Carbohydrate	2 g	1%
of which Sugars	2 g	2%
Fibre	0 g	
Protein	1.6 g	3%
Salt	0.06 g	1%
Sodium	20 mg	

SUPPLEMENTARY  
NUTRITIONAL  
INFORMATION

HANDLING &  
STORAGE  
INFORMATION

Directions For Use

Use within 3 days of opening

Storage Instructions

Keep Refrigerated

Shelf Life from Time of Production	28 Days
------------------------------------	---------

BRCGS Certified	Red Tractor
-----------------	-------------

Other Accreditation	
---------------------	--

Product Country of Origin	United Kingdom
---------------------------	----------------

Additional Origin Details	Dorset
---------------------------	--------

Standards Testing	
-------------------	--

ACCREDITATIONS/  
CERTIFICATIONS/  
ASSURANCE  
SCHEMES  
ORIGIN

PRODUCT  
CHARACTERISTICS

	<div>Do you undertake trend analysis of microbiological results?</div>	<div>Yes</div>	<div>Is shelf life testing undertaken?</div>		<div>Yes</div>	
	Microbiological Standards					
	<div>Organism</div>	<div>Description</div>	<div>Frequency</div>	<div>Target</div>	<div>Maximum</div>	<div>Sample (g or ml)</div>
	Enterobacteriaceae (cfu/g or ml)		Every Batch	<10	100	-
	Listeria Monocytogenes (cfu/g or ml)		Monthly	=0	1	25
	Staphylococcus Aureus (cfu/g or ml)		Monthly	<20	20	-
	Total Viable Count (TVC) (cfu/g or ml)		Every Batch	<5000	10000	-
	Salmonella (cfu/g or ml)		Monthly	=0	1	25
	Yeast (cfu/g or ml)		Every Batch	<50	100	-
	Moulds (cfu/g or ml)		Every Batch	<50	100	-
CONFIGURATION	Case Configuration		Inner Pack Configuration			
	<div>Total Quantity of Inner Components in Outer Case</div>	6 Units				
	<div>Is the Outer Case Splittable?</div>	No				
PRODUCT WEIGHTS	Inner Component					
	<div>Variable Weight Consumer Item</div>	No				
	<div>Weight/Volume</div>					
	1kg					
	Outer Case					
	<div>Outer Case Gross Weight</div>	1.08 kg				
	<div>Outer Case Net Weight</div>	1 kg				
PRODUCT DIMENSIONS	Inner Component					
	<div>Inner Component Depth</div>	319 mm				
	<div>Inner Component Width</div>	250 mm				
	<div>Inner Component Height</div>	60 mm				
	Outer Case					
	<div>Outer Case Depth</div>	385 mm				
	<div>Outer Case Width</div>	200 mm				
	<div>Outer Case Height</div>	160 mm				
PALLET INFORMATION	<div>Quantity of Cases Per Pallet Layer</div>	20 Cases	<div>Pallet Height</div>		0 MTR	
	<div>Quantity of Layers Per Pallet</div>	4 Layers				
	<div>Quantity of Cases Per Pallet</div>	80 Cases				
PACKAGING	Inner Component Packaging					
	<div>Type</div>	<div>Materials</div>	<div>Weight</div>	<div>Recycled Plastic %</div>	<div>Recyclable</div>	<div>Returnable</div>
	Tub	Plastic	25 g	- %		
	Tub	Paper/Cardboard	68 g	- %		
OTHER INFORMATION	<div>Commodity Code</div>	04029191	<div>Identification/Health Marks</div>		GB NO 006	
	<div>Manufacturer Comments</div>					
	~					

CONTACT  
INFORMATION

Address

Carron Lodge Ltd.  
Park Head Farm, Carron Lane  
Inglewhite  
Preston  
Lancashire  
PR3 2LN  
United Kingdom

P: (Phone) 01995 640352

The information on the [Erudus System](#) has been supplied by the manufacturers of the products and, whilst the owners of the Erudus System take steps to ensure the information is regularly updated, they give no warranty and no guarantee that the information is accurate. Product information and ingredients may change, please always read product labels carefully in addition to using the information provided by Erudus.

We do not accept liability for any inaccuracies or incorrect information contained on this site.  
Please visit <http://www.erudus.com/terms-and-conditions> for full terms and conditions.