

This specification is published by [Erudus](#) for Caterfood Buying Group

Caterfood Select Pickled Silverskin Onions - 2x2.25kg

Caterfood Select Pickled Silverskin Onions 2x2.25kg

PRODUCT DESCRIPTION

Pickled Silverskin Onions 2x2.25kg

Brand	Caterfood Buying Group
Label Own Label Code	C10069
Product Type	Food
Product Category	Pickled / Preserved
Storage Type	Ambient
Erudus ID	0f1b53be74d2462e94450bd121476534
Specification Type	Generic
Inner Component GTIN	5056750401647
Outer Case GTIN	05056750401630



INGREDIENTS

Ingredient Declaration

Silverskin Onions, Water, Acidity Regulator: Acetic Acid; Spirit Vinegar, Salt, Preservative: Sodium **METABISULPHITE**.

ALLERGENS

Product Contains:

Celery/Celeriac	No
Cereals Containing Gluten	No
Barley	No
Oats	No
Rye	No
Wheat (including Spelt and Khorasan)	No
Crustacea	No
Eggs	No
Fish	No
Lupin	No
Milk	No
Molluscs	No

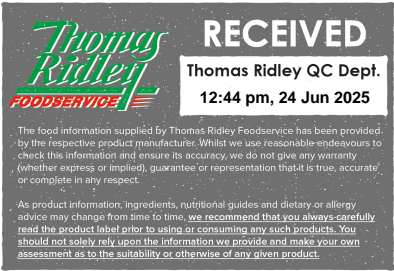
Mustard	No
Nuts (Tree)	No
Almond nuts	No
Brazil nuts	No
Cashew nuts	No
Hazelnuts	No
Macadamia (Queensland) nuts	No
Pecan nuts	No
Pistachio nuts	No
Walnuts	No
Peanuts	No
Sesame Seeds	No
Soybeans	No
Sulphur Dioxide and Sulphites	Yes

Allergen Statement On Pack

Contains Sulphites

Additional Allergen Information

No



SUPPLEMENTARY
INGREDIENT
INFORMATION

Palm Oil	No
Hydrogenated Vegetable Oil/Fat	No
GM Protein/DNA	No

Alcoholic Strength %Vol (ABV)	0 % Vol
CBD Concentration per Unit	0 mg

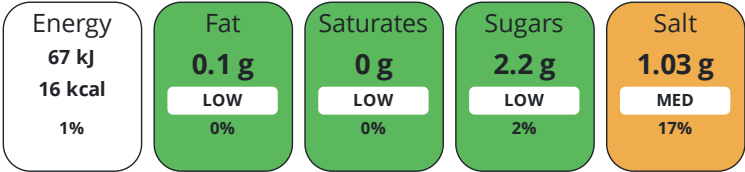
ADDITIVES

Product Contains:	
Artificial Antioxidants	No
Artificial Colours	No
Artificial Flavour Enhancers	No
Vegan Diet	Suitable for
Artificial Flavourings	No
Artificial Preservatives	Yes
Artificial Sweeteners	No
Vegetarian Diet	Suitable for

DIET
SUITABILITY

NUTRITIONAL
INFORMATION AS
SOLD

Each 100g/ml portion contains:



of your reference intake.

Typical values per 100g/ml : Energy 16kcal / 67kJ

Nutrient	per 100g	RI per 100g	per 20g serving	RI per 20g serving
Energy (kJ)	67 kJ	1%	13.4	0%
Energy (kcal)	16 kcal	1%	3.2	0%
Fat	0.1 g	0%	0.02 g	0%
of which Saturates	0 g		0 g	
Carbohydrate	3.1 g	1%	0.62 g	0%
of which Sugars	2.2 g	2%	0.44 g	0%
Fibre	< 0.5 g		0.1 g	
Protein	0.6 g	1%	0.12 g	0%
Salt	1.03 g	17%	0.21 g	4%
Sodium	410 mg		82 mg	
Serving Size	20 g			
Number of Servings	58.5 Servings			
Source of Nutritional Information	Calculation from known/accepted datasets			

NUTRITIONAL
INFORMATION AS
PREPARED

Nutrient	per 100g/ml prepared	RI per 100g/ml prepared	per 20g prepared	RI per 20g/ml prepared
Energy (kJ)	67 kJ	1%	13.4 kJ	0%
Energy (kcal)	16 kcal	1%	3.2 kcal	0%
Fat	0.1 g	0%	0.02 g	0%
of which Saturates	0 g		0 g	
of which Mono-unsaturates	< 0.5 g			
of which Polyunsaturates	< 0.5 g			
Carbohydrate	3.1 g	1%	0.62 g	0%
of which Sugars	2.2 g	2%	0.44 g	0%
Fibre	< 0.5 g		0.36 g	
Protein	0.6 g	1%	0.12 g	0%
Salt	1.03 g	17%	0.21 g	4%
Sodium	410 mg		82 mg	

SUPPLEMENTARY
NUTRITIONAL
INFORMATION

HANDLING &
STORAGE
INFORMATION

Directions For Use

N/A

Storage Instructions

Store in cool dry place. Once opened refrigerate and consume within 42 days

Storage Instructions After Opening

Once opened refrigerate and consume within 42 days

Shelf Life from Time of Production	730 Days
Shelf Life From Opening	42 Days
Shelf Life Once Defrosted	0 Days

ACCREDITATIONS/
CERTIFICATIONS/
ASSURANCE
SCHEMES
ORIGIN

BRCGS Certified

BRCGS Food Safety

Product Country of Origin	United Kingdom
---------------------------	----------------

Additional Origin Details

Manufactured in UK

Origin of the Primary Ingredient	Not Applicable
----------------------------------	----------------

PRODUCT
CHARACTERISTICS
CONFIGURATION

Standards Testing

Case Configuration

Inner Pack Configuration

Variable Inner Components in Outer Case	No
---	----

Count per Inner Component	2
---------------------------	---

Total Quantity of Inner Components in Outer Case	2 Units
--	---------

Is the Outer Case Splittable?	Yes
-------------------------------	-----

PRODUCT WEIGHTS

Inner Component	
Variable Weight Consumer Item	No
Inner Component Weight	2.25 kg
Inner Component Volume	2.4 litre
Net Drained Weight	1.17 kg
e mark	No
Outer Case	
Outer Case Gross Weight	4.73 kg
Outer Case Net Weight	4.7 kg

PRODUCT DIMENSIONS

Inner Component	
Inner Component Depth	130 mm
Inner Component Width	138 mm
Inner Component Height	294 mm
Inner Component Diameter	138 mm
Outer Case	
Outer Case Depth	294 mm
Outer Case Width	138 mm
Outer Case Height	204 mm

PALLET INFORMATION

Quantity of Cases Per Pallet Layer	28 Cases	Pallet Type	UK Standard Pallet
Quantity of Layers Per Pallet	5 Layers	Pallet Height	1.02 MTR
Quantity of Cases Per Pallet	140 Cases	Pallet Gross Weight	724.78 kg

MARKETING INFORMATION

Marketing Description
Silverskin Onions Pickled in Spirit Vinegar

SAFETY & WARNINGS

OTHER INFORMATION
CONTACT INFORMATION

ADDRESS

Caterfood Buying Group
BFS Group Ltd
814 Leigh Road
Slough
Berkshire
SL1 4BD
United Kingdom

The information on the [Erudus System](#) has been supplied by the manufacturers of the products and, whilst the owners of the Erudus System take steps to ensure the information is regularly updated, they give no warranty and no guarantee that the information is accurate. Product information and ingredients may change, please always read product labels carefully in addition to using the information provided by Erudus.

We do not accept liability for any inaccuracies or incorrect information contained on this site.
Please visit <http://www.erudus.com/terms-and-conditions> for full terms and conditions.