

Changed Aug 08, 2024 14:58

Reviewed Aug 08, 2024 14:58

Erudus ID 53b3d5112fbb48279f18e958a8bcaaab

Version 2.0

Status Published

Thomas Ridley QC Dept.
10:30, 4 Sep 2025

The food information supplied by Thomas Ridley Foodservice has been provided by the respective product manufacturer. Whilst we use reasonable endeavours to check this information and ensure its accuracy, we do not give any warranty (whether express or implied), guarantee or representation that it is true, accurate or complete in any respect.

As product information, ingredients, nutritional guides and dietary or allergy advice may change from time to time, we recommend that you always carefully read the product label prior to using or consuming any such products. You should not solely rely upon the information we provide and make your own assessment as to the suitability or otherwise of any given product.



14898

Folkington's old fashioned elderflower drink 250ml

Old-fashioned Elderflower Drink 12x250ml

PRODUCT DESCRIPTION

Old Fashioned Elderflower drink made from wild English Elderflowers.

Brand	Folkington's (Metro Drinks Limited)
Manufacturer Product Code	FO025EL
Manufacturer Version Number	2024 Spec Update
Product Type	Drink
Product Category	Juices and Cordials
Storage Type	Ambient
Erudus ID	53b3d5112fbb48279f18e958a8bcaaab
Specification Type	Drinks
Inner Component GTIN	5060042981076
Outer Case GTIN	5060042981083



INGREDIENTS

Ingredient Declaration

Water, pure juice and infusion: 7.5% (Sicilian lemon juice, Yorkshire rhubarb juice, English wild elderflower infusion), Sugar

ALLERGENS

Product Contains:

Celery/Celeriac	No	Mustard	No
Cereals Containing Gluten	No	Nuts (Tree)	No
Barley	No	Almond nuts	No
Oats	No	Brazil nuts	No
Rye	No	Cashew nuts	No
Wheat (including Spelt and Khorasan)	No	Hazelnuts	No
Crustacea	No	Macadamia (Queensland) nuts	No
Eggs	No	Pecan nuts	No
Fish	No	Pistachio nuts	No
Lupin	No	Walnuts	No
Milk	No	Peanuts	No
Molluscs	No	Sesame Seeds	No
		Soybeans	No
		Sulphur Dioxide and Sulphites	No

Additional Allergen Information

No Allergens

SUPPLEMENTARY
INGREDIENT
INFORMATION

Palm Oil	No
Hydrogenated Vegetable Oil/Fat	No
GM Protein/DNA	No

ADDITIVES

Product Contains:

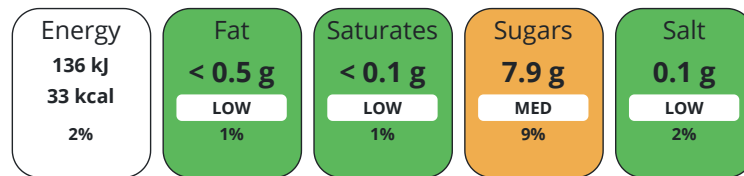
Artificial Antioxidants	No	Artificial Flavourings	No
Artificial Colours	No	Artificial Preservatives	No
Artificial Flavour Enhancers	No	Artificial Sweeteners	No

DIET SUITABILITY

Vegan Diet	Suitable for	Vegetarian Diet	Suitable for
Halal Diet	No	Kosher Diet	No

NUTRITIONAL
INFORMATION AS
SOLD

Each 100g/ml portion contains:



of your reference intake.

Typical values per 100g/ml : Energy 33kcal / 136kJ

Nutrient	per 100ml	RI per 100ml	per 100ml serving	RI per 100ml serving
Energy (kJ)	136 kJ	2%	136	2%
Energy (kcal)	33 kcal	2%	33	2%
Fat	< 0.5 g	1%	0.5 g	1%
of which Saturates	< 0.1 g	1%	0.1 g	1%
Carbohydrate	8.1 g	3%	8.1 g	3%
of which Sugars	7.9 g	9%	7.9 g	9%
Protein	< 0.5 g	1%	0.5 g	1%
Salt	0.1 g	2%	0.1 g	2%
Sodium	< 0.01 mg		0.01 mg	

Serving Size 100 ml

SUPPLEMENTARY
NUTRITIONAL
INFORMATION

HANDLING &
STORAGE
INFORMATION

Directions For Use

Do not consume if safety button on cap does not pop up on first opening. Shake well: once opened, keep refrigerated below 5 deg C and consume within 3 days.

Storage Instructions

Store at room temperature and away from direct sunlight.

Storage Instructions After Opening

Once opened, keep refrigerated below 5 deg C and consume within 3 days.

Shelf Life from Time of Production 728 Days

Shelf Life From Opening 3 Days

ACCREDITATIONS/
CERTIFICATIONS/
ASSURANCE
SCHEMES

BRCGS Certified

Other Accreditation

ORIGIN	Product Country of Origin United Kingdom							
	Additional Origin Details Elderflowers and rhubarb from England, lemons from Sicily							
	Origin of the Primary Ingredient							
PRODUCT CHARACTERISTICS CONFIGURATION	Standards Testing							
	Case Configuration	Inner Pack Configuration						
	Total Quantity of Inner Components in Outer Case	12 Units						
	Is the Outer Case Splittable?	Yes						
PRODUCT WEIGHTS	Inner Component							
	Inner Component Volume	250 ml						
	Outer Case							
	Outer Case Gross Weight	4.98 kg						
	Outer Case Net Weight	3.12 kg						
PRODUCT DIMENSIONS	Inner Component							
	Inner Component Depth	55 mm						
	Inner Component Width	55 mm						
	Inner Component Height	155 mm						
	Outer Case							
	Outer Case Depth	240 mm						
	Outer Case Width	185 mm						
	Outer Case Height	160 mm						
	PALLET INFORMATION	Quantity of Cases Per Pallet Layer	26 Cases	Pallet Type	UK Standard Pallet			
		Quantity of Layers Per Pallet	8 Layers	Pallet Height	1.5 MTR			
Quantity of Cases Per Pallet		208 Cases	Pallet Gross Weight	1075 kg				
Inner Component Packaging								
PACKAGING	Type	Materials	Weight	Recycled Plastic %	Recyclable	Returnable	Composite	
	Bottle	Glass	142 g	- %	Yes	No		
	Sleeve	Plastic / PET (Polyethylene Terethphalate)	1.6 g	30 %	Yes	No		
	Lid	Steel	5 g	- %	Yes	No		
	Outer Case Packaging							
	Type	Materials	Weight	Recycled Plastic %	Recyclable	Returnable	Composite	
	Case	Paper/Cardboard	28.1 g	- %	Yes	No		
	Shrink Wrap	Plastic / LDPE (Low Density Polyethylene)	48.2 g	30 %	Yes	No		
	Transport Packaging							
	Type	Materials	Weight	Recycled Plastic %	Recyclable	Returnable	Composite	
	Pallet	Wood	28000 g	- %	Yes	No		
	Pallet Wrap	Plastic / LDPE (Low Density Polyethylene)	250 g	30 %	Yes	No		

MARKETING
INFORMATION

Marketing Description

An infusion of wild elderflowers hand-picked from hedgerows in the Cuckmere River valley (Sussex) and across the Southwest of England. Floral drink with mild taste and aroma of fresh elderflowers and citrus flavours.

SAFETY &
WARNINGS

OTHER
INFORMATION

Intrastat/Taric Code	22029010	Value Added Tax Rate	20%
Commodity Code	2202100000		

Manufacturer Comments

N/A

CONTACT
INFORMATION

Address

Folkington's (Metro Drinks Limited)
The Workshop
Endlewick House
Arlington
BN26 6RU
England

P: (Phone) 01323 485602

The information on the [Erudus System](#) has been supplied by the manufacturers of the products and, whilst the owners of the Erudus System take steps to ensure the information is regularly updated, they give no warranty and no guarantee that the information is accurate. Product information and ingredients may change, please always read product labels carefully in addition to using the information provided by Erudus.

We do not accept liability for any inaccuracies or incorrect information contained on this site.
Please visit <http://www.erudus.com/terms-and-conditions> for full terms and conditions.