

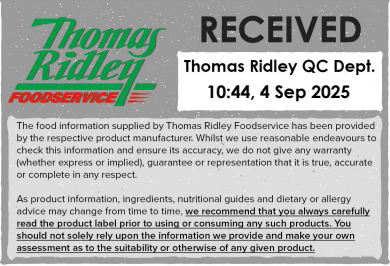
ChangedMar 18, 2025 14:32

ReviewedMar 18, 2025 14:32

Erudus ID7bb296b676334d7d8753813328ee1d9d

Version2.0

StatusPublished



14900

Folkington's pressed peach nectar - 250ml

Pressed Peach Nectar 12x250ml

PRODUCT DESCRIPTION

Folkington's peach juice nectar is made from a blend of peach varieties, grown principally by farming communities across the Spanish regions of Catalonia and Aragon.

Brand	Folkington's (Metro Drinks Limited)
Manufacturer Product Code	FO025PH
Manufacturer Version Number	2025 NPD
Product Type	Drink
Product Category	Juices and Cordials
Storage Type	Ambient
Erudus ID	7bb296b676334d7d8753813328ee1d9d
Specification Type	Drinks
Inner Component GTIN	5060042982660
Outer Case GTIN	5060042982677



INGREDIENTS

Ingredient Declaration

Pure peach juice and puree 67%, not from concentrate, water, grape syrup, antioxidant: ascorbic acid.

ALLERGENS

Product Contains:

Celery/Celeriac	No
Cereals Containing Gluten	No
Barley	No
Oats	No
Rye	No
Wheat (including Spelt and Khorasan)	No
Crustacea	No
Eggs	No
Fish	No
Lupin	No
Milk	No
Molluscs	No

Mustard	No
Nuts (Tree)	No
Almond nuts	No
Brazil nuts	No
Cashew nuts	No
Hazelnuts	No
Macadamia (Queensland) nuts	No
Pecan nuts	No
Pistachio nuts	No
Walnuts	No
Peanuts	No
Sesame Seeds	No
Soybeans	No
Sulphur Dioxide and Sulphites	No

Additional Allergen Information

No Allergens

SUPPLEMENTARY
INGREDIENT
INFORMATION

Palm Oil	No
Hydrogenated Vegetable Oil/Fat	No
GM Protein/DNA	No

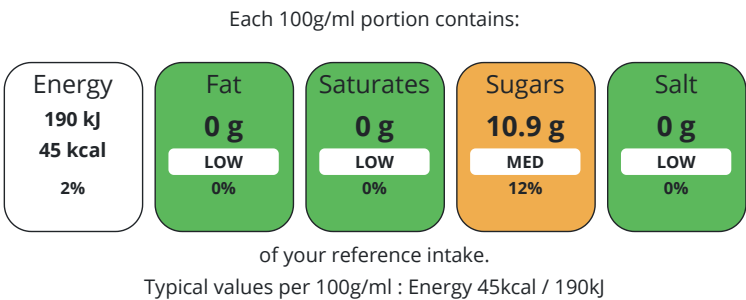
ADDITIVES

Product Contains:			
Artificial Antioxidants	Yes	Artificial Flavourings	No
Artificial Colours	No	Artificial Preservatives	No
Artificial Flavour Enhancers	No	Artificial Sweeteners	No

DIET SUITABILITY

Vegan Diet	Suitable for	Vegetarian Diet	Suitable for
Halal Diet	No	Kosher Diet	No

NUTRITIONAL
INFORMATION AS
SOLD



Nutrient	per 100ml	RI per 100ml	per 100ml serving	RI per 100ml serving
Energy (kJ)	190 kJ	2%	190	2%
Energy (kcal)	45 kcal	2%	45	2%
Fat	0 g		0 g	
of which Saturates	0 g		0 g	
of which Mono-unsaturates	0 g		0 g	
of which Polyunsaturates	0 g		0 g	
Carbohydrate	11.4 g	4%	11.4 g	4%
of which Sugars	10.9 g	12%	10.9 g	12%
Protein	0.2 g	0%	0.2 g	0%
Salt	0 g		0 g	
Sodium	0 mg		0 mg	
Serving Size	100 ml			

SUPPLEMENTARY
NUTRITIONAL
INFORMATION

HANDLING &
STORAGE
INFORMATION

Directions For Use	Do not consume if safety button on cap does not pop up on first opening. Shake well: once opened, keep refrigerated below 5 deg C and use within 2 days
Storage Instructions	Store at room temperature and away from direct sunlight
Storage Instructions After Opening	Once opened, keep refrigerated below 5 deg C and use within 2 days
Shelf Life from Time of Production	728 Days
Shelf Life From Opening	2 Days

ACCREDITATIONS/ CERTIFICATIONS/ ASSURANCE SCHEMES ORIGIN	IFS Food Standard			Other Accreditation					
PRODUCT CHARACTERISTICS	Product Country of Origin			Spain					
	Origin of the Primary Ingredient								
	Standards Testing								
CONFIGURATION	Do you undertake trend analysis of microbiological results?			No		Is shelf life testing undertaken?		No	
	Case Configuration			Inner Pack Configuration					
	Variable Inner Components in Outer Case			No					
	Total Quantity of Inner Components in Outer Case			12 Units					
	Is the Outer Case Splittable?			Yes					
PRODUCT WEIGHTS	Inner Component								
	Inner Component Volume			250 ml					
	Outer Case								
	Outer Case Gross Weight			5.04 kg					
	Outer Case Net Weight			3.12 kg					
PRODUCT DIMENSIONS	Inner Component								
	Inner Component Depth			55 mm					
	Inner Component Width			55 mm					
	Inner Component Height			160 mm					
	Outer Case								
	Outer Case Depth			240 mm					
	Outer Case Width			185 mm					
	Outer Case Height			160 mm					
PALLET INFORMATION	Quantity of Cases Per Pallet Layer			26 Cases		Pallet Type		UK Standard Pallet	
	Quantity of Layers Per Pallet			8 Layers		Pallet Height		1.28 MTR	
	Quantity of Cases Per Pallet			208 Cases		Pallet Gross Weight		1075 kg	
PACKAGING	Inner Component Packaging								
	Type	Materials	Weight	Recycled Plastic %	Recyclable	Returnable	Composite		
	Bottle	Glass	142 g	- %	Yes	No			
	Lid	Steel	5 g	- %	Yes	No			
	Sleeve	Plastic / PET (Polyethylene Terethphalate)	1.6 g	30 %	Yes	No			
	Outer Case Packaging								
	Type	Materials	Weight	Recycled Plastic %	Recyclable	Returnable	Composite		
	Box	Paper/Cardboard	131 g	- %	Yes	No			
	Label	Paper/Cardboard	0.1 g	- %	Yes	No			

SAFETY &
WARNINGS

OTHER
INFORMATION

CONTACT
INFORMATION

Transport Packaging

Type	Materials	Weight	Recycled Plastic %	Recyclable	Returnable	Composite
Pallet Wrap	Plastic / LDPE (Low Density Polyethylene)	250 g	30 %	Yes	No	
Pallet	Wood	28000 g	- %	Yes	No	

Commodity Code	2009909880	Value Added Tax Rate	20%
Manufacturer Comments			
N/A			
Address			
Folkington's (Metro Drinks Limited)			
The Workshop			
Endlewick House			
Arlington			
BN26 6RU			
England			
P: (Phone) 01323 485602			

The information on the [Erudus System](#) has been supplied by the manufacturers of the products and, whilst the owners of the Erudus System take steps to ensure the information is regularly updated, they give no warranty and no guarantee that the information is accurate. Product information and ingredients may change, please always read product labels carefully in addition to using the information provided by Erudus.

We do not accept liability for any inaccuracies or incorrect information contained on this site.
Please visit <http://www.erudus.com/terms-and-conditions> for full terms and conditions.