

# Kilkeel Wholetail Breaded Scampi 5\*1kg

Kilkeel Wholetail Breaded Scampi 5x1kg

## PRODUCT DESCRIPTION

Whole scampi (langoustine) tails in a crisp, golden crumb. With added water. Contains one or more tails per piece.

Brand	Whitby Seafoods Ltd
Manufacturer Product Code	1691
Product Type	Food
Product Category	Prawns, Shrimp & Scampi
Storage Type	Frozen
Erudus ID	bb2e1d76bb204c8193f676c6af907eca
Specification Type	Fish and Seafood

Inner Component GTIN	5016316016913
Outer Case GTIN	05016316916916



## INGREDIENTS

**Ingredient Declaration**  
Scampi (**crustacea**) (37%), **wheat** flour [**wheat** flour, calcium carbonate, iron, niacin, thiamin], water, rapeseed oil, **wheat** starch, salt, yeast, stabilisers: E339, E451, E452; concentrate: caramelised carrot, carrot; colour: E160c.

## ALLERGENS

Product Contains:			
Celery/Celeriac	No	Mustard	No
Cereals Containing Gluten	Yes	Nuts (Tree)	No
Barley	No	Almond nuts	No
Oats	No	Brazil nuts	No
Rye	No	Cashew nuts	No
Wheat (including Spelt and Khorasan)	Yes	Hazelnuts	No
Crustacea	Yes	Macadamia (Queensland) nuts	No
Eggs	No	Pecan nuts	No
Fish	May Contain	Pistachio nuts	No
Lupin	No	Walnuts	No
Milk	No	Peanuts	No
Molluscs	May Contain	Sesame Seeds	No
		Soybeans	No
		Sulphur Dioxide and Sulphites	No
Risk Source:			
Fish (Risk Source)	Factory	Molluscs (Risk Source)	Factory

**Allergen Statement On Pack**  
For allergens, including cereals containing gluten, see ingredients in bold. May contain fish and molluscs

SUPPLEMENTARY INGREDIENT INFORMATION	Palm Oil	No
	GM Protein/DNA	No

ADDITIVES

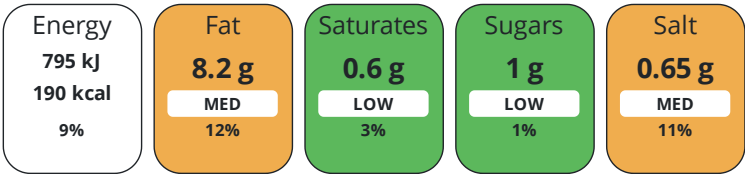
Product Contains:

Artificial Antioxidants	No	Artificial Flavourings	No
Artificial Colours	No	Artificial Preservatives	No
Artificial Flavour Enhancers	No	Artificial Sweeteners	No
Halal Diet	Suitable for	Kosher Diet	No

DIET  
SUITABILITY

NUTRITIONAL  
INFORMATION AS  
SOLD

Each 100g/ml portion contains:



of your reference intake.

Typical values per 100g/ml : Energy 190kcal / 795kJ

Nutrient	per 100g	RI per 100g
Energy (kJ)	795 kJ	9%
Energy (kcal)	190 kcal	10%
Fat	8.2 g	12%
of which Saturates	0.6 g	3%
of which Mono-unsaturates	< 0.1 g	
of which Polyunsaturates	< 0.1 g	
Carbohydrate	19 g	7%
of which Sugars	1 g	1%
Fibre	1.1 g	
Protein	9.3 g	19%
Salt	0.65 g	11%
Sodium	< 0.01 mg	

NUTRITIONAL  
INFORMATION AS  
PREPARED

Nutrient	per 100g/ml prepared	RI per 100g/ml prepared
of which Saturates		
of which Mono-unsaturates		
of which Polyunsaturates		
Carbohydrate		
Fibre		
Protein		
Salt		
Sodium		

SUPPLEMENTARY  
NUTRITIONAL  
INFORMATION

HANDLING &  
STORAGE  
INFORMATION

Directions For Use

Oven Bake: Preheat oven to 220°C/200°C fan/gas mark 7. Remove all packaging and place the scampi on a preheated baking tray in the centre of the oven. Bake for 15-16 mins, turning halfway through cooking, until crisp and golden. Tuck in. Deep Fry Remove all packaging and place the scampi into hot oil (180°C). Cook from frozen for 4-5 mins until crisp and golden. Drain on kitchen paper before serving. Scoff before someone else does. Air Fry Based on 1400W 4 litre air fryer: Set temp to 180°C. Remove all packaging, pop the scampi into the basket and place into the air fryer. Air fry for 10 mins, turning halfway through cooking, until crisp and golden. Tuck in. Accelerated Combi Oven This product is suitable for cooking in an accelerated combi oven. Please refer to the manufacturer's instructions for your oven.

Storage Instructions

Store at -18°C or colder until best before date. Once defrosted, do not refreeze.

ACCREDITATIONS/  
CERTIFICATIONS/  
ASSURANCE  
SCHEMES  
ORIGIN

Shelf Life from Time of Production547 Days

BRCGS Certified

Sedex

Product Country of OriginUnited Kingdom

Origin of the Primary IngredientUnited Kingdom

Catch MethodBottom Trawl

Catch Zone27 - Atlantic, Northeast

PRODUCT  
CHARACTERISTICS

Standards Testing

Do you undertake trend analysis of microbiological results?Yes

Is shelf life testing undertaken?Yes

Microbiological Standards

Organism	Description	Frequency	Target	Maximum	Sample (g or ml)
Coliforms (cfu/g or ml)		Annually	<1000	10000	100
E. Coli (cfu/g or ml)		Annually	<10	10	100
Aerobic Colony Count (ACC) (cfu/g or ml)		Annually	<100000	1000000	100
Salmonella (cfu/g or ml)		Annually	<0	0	25
Coagulase-positive Staphylococci (cfu/g or ml)		Annually	<10	100	100

HAZARD CONTROLS

Metal DetectionYes

CONFIGURATION

Case Configuration

Inner Pack Configuration

Variable Inner Components in Outer CaseNo

Total Quantity of Inner Components in Outer Case5 Units

Is the Outer Case Splittable?No

PRODUCT  
WEIGHTS

Inner Component

Variable Weight Consumer ItemNo

Inner Component Weight1 kg

Outer Case

Outer Case Gross Weight5.26 kg

Outer Case Net Weight5 kg

PRODUCT  
DIMENSIONS

Inner Component	
Inner Component Depth	25 mm
Inner Component Width	220 mm
Inner Component Height	330 mm
Outer Case	
Outer Case Depth	295 mm
Outer Case Width	395 mm
Outer Case Height	108 mm

PALLET  
INFORMATION

Quantity of Cases Per Pallet Layer	10 Cases	Pallet Type	UK Standard Pallet
Quantity of Layers Per Pallet	14 Layers	Pallet Height	1.68 MTR
Quantity of Cases Per Pallet	140 Cases	Pallet Gross Weight	763.84 kg

SAFETY &  
WARNINGS

OTHER  
INFORMATION  
CONTACT  
INFORMATION

Address	Technical Contact
Whitby Seafoods Ltd	Neve Saltmarsh
Fairfield way	Technical Services Coordinator
Whitby Business park	neve.saltmarsh@whitby-seafoods.com
Whitby	
North Yorkshire	
YO22 4PU	
England	
P. (Phone) 01947 606101	
Complaints Contact	
Neve Saltmarsh	
Technical Services Coordinator	
neve.saltmarsh@whitby-seafoods.com	

The information on the [Erudus System](#) has been supplied by the manufacturers of the products and, whilst the owners of the Erudus System take steps to ensure the information is regularly updated, they give no warranty and no guarantee that the information is accurate. Product information and ingredients may change, please always read product labels carefully in addition to using the information provided by Erudus.

We do not accept liability for any inaccuracies or incorrect information contained on this site.  
Please visit <http://www.erudus.com/terms-and-conditions> for full terms and conditions.