

This specification is published by [Erudus](#) for Caterfood Buying Group

# Caterfood Select Beef Lasagne 12 x 350g

Caterfood Select Beef Lasagne 12x350g

## PRODUCT DESCRIPTION

Minced Beef cooked with onions, tomatoes, herbs with layers of cooked pasta and topped with white sauce

Brand	Caterfood Buying Group
Label Own Label Code	C20118
Product Type	Food
Product Category	Ready Meals
Storage Type	Frozen
Erudus ID	92ab1942421a494f8c33e1b740c5c643
Specification Type	Generic
Outer Case GTIN	5056750402507



## INGREDIENTS

**Ingredient Declaration**  
Lasagne Meat Sauce (57%) (Water, Onions, Minced Beef (19%), Chopped Tomatoes, Tomato Purée, Modified Maize Starch, Beef Stock (Salt, Glucose Syrup, Flavourings, Maltodextrin,Yeast Extract, Rapeseed Oil, Beef, Onion, Tomato, Carrot Extract, Herbs, Spices, Garlic, Colour:Ammonia Caramel; Sugar), Garlic Purée, Oregano, Mixed Herbs, Ground Black Pepper), White Sauce (31%) (Water, Whole **MILK** Powder, Waxy Maize Starch, Cream Powder (**MILK**), Salt, Onion Powder, Modified Maize Starch, Yeast Extract, Ground **CELERY**, Ground Nutmeg, Ground White Pepper), Cooked Lasagne Pasta (11%) (Durum **WHEAT** Semolina,Water).

## ALLERGENS

Product Contains:

Celery/Celeriac	Yes
Cereals Containing Gluten	Yes
Barley	May Contain
Oats	May Contain
Rye	May Contain
Wheat (including Spelt and Khorasan)	Yes
Crustacea	May Contain
Eggs	May Contain
Fish	May Contain
Lupin	No
Milk	Yes
Molluscs	May Contain

Mustard	May Contain
Nuts (Tree)	May Contain
Almond nuts	May Contain
Brazil nuts	May Contain
Cashew nuts	May Contain
Hazelnuts	May Contain
Macadamia (Queensland) nuts	May Contain
Pecan nuts	May Contain
Pistachio nuts	May Contain
Walnuts	May Contain
Peanuts	May Contain
Sesame Seeds	May Contain
Soybeans	May Contain
Sulphur Dioxide and Sulphites	May Contain

SUPPLEMENTARY  
INGREDIENT  
INFORMATION

ADDITIVES

DIET SUITABILITY

NUTRITIONAL  
INFORMATION AS  
SOLD

Risk Source:

Barley (Risk Source)	Raw Material
Rye (Risk Source)	Raw Material
Eggs (Risk Source)	Raw Material
Molluscs (Risk Source)	Raw Material
Tree Nuts (Risk Source)	Raw Material
Brazil nuts (Risk Source)	Raw Material
Hazelnuts (Risk Source)	Raw Material
Pecan nuts (Risk Source)	Raw Material
Walnuts (Risk Source)	Raw Material
Sesame Seeds (Risk Source)	Raw Material
Sulphur Dioxide and Sulphites (Risk Source)	Raw Material

Oats (Risk Source)	Raw Material
Crustacea (Risk Source)	Raw Material
Fish (Risk Source)	Raw Material
Mustard (Risk Source)	Raw Material
Almond nuts (Risk Source)	Raw Material
Cashew nuts (Risk Source)	Raw Material
Macadamia nuts (Risk Source)	Raw Material
Pistachio nuts (Risk Source)	Raw Material
Peanuts (Risk Source)	Raw Material
Soybeans (Risk Source)	Raw Material

Allergen Statement On Pack

For allergens, see ingredients in CAPITALS. May also contain cereals containing Gluten (From Rye, Barley, Oats), Crustaceans, Egg, Fish, Peanut, Soya, Nuts, Mustard, Sesame and Molluscs and Sulphites.

Palm Oil	No
Hydrogenated Vegetable Oil/Fat	No
GM Protein/DNA	No

Product Contains:

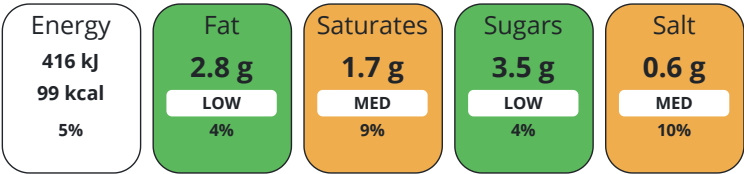
Artificial Antioxidants	No
Artificial Colours	No
Artificial Flavour Enhancers	No

Artificial Flavourings	No
Artificial Preservatives	No
Artificial Sweeteners	No

Vegan Diet	No
Halal Diet	No

Vegetarian Diet	No
Kosher Diet	No

Each 100g/ml portion contains:



of your reference intake.

Typical values per 100g/ml : Energy 99kcal / 416kJ



Organism	Description	Frequency	Target	Maximum	Sample (g or ml)
E. Coli (cfu/g or ml)		Every Batch	<10	100	100
Staphylococcus Aureus (cfu/g or ml)		Every Batch	<20	10000	100
Salmonella (cfu/g or ml)		Every Batch	=0	0	25
Listeria Monocytogenes (cfu/g or ml)		Every Batch	=0	0	25
Clostridium Perfringens (cfu/g or ml)		Every Batch	<10	100	100
Bacillus Cereus (cfu/g or ml)		Every Batch	<20	10000	100

ORGANOLEPTICS

Appearance

Top is a layer of creamy white sauce, appears thick in consistency, evenly spread. Layers of flat, wide pasta sheets alternated with a mince beef in a dark, red tomato sauce, diced onions, medium/thick consistency

Aroma

Complex blend of a savoury and aromatic notes.

Taste

Savoury beef with tomato sauce with diced onions with notes of mixed herbs.

Texture

Mince beef blend and tomato sauce ,soft to bite. Low resistance. Overall consistency is medium to thick with particulates.

HAZARD CONTROLS

CONFIGURATION	<b>Metal Detection</b>	Yes		
	Case Configuration		Inner Pack Configuration	
	<b>Total Quantity of Inner Components in Outer Case</b>	12 Units	<b>Is Inner Pack Splittable?</b>	No
	<b>Total Quantity of Inner Packs in Outer Case</b>	12 Units		
PRODUCT WEIGHTS	<b>Is the Outer Case Splittable?</b>	No		
	Inner Component		Inner Pack	
	<b>Variable Weight Consumer Item</b>	No	<b>Inner Pack Gross Weight</b>	368 g
	<b>Inner Component Weight</b>	350 g	<b>Inner Pack Net Weight</b>	350 g
PRODUCT DIMENSIONS	<b>e mark</b>	No		
	Outer Case			
	<b>Outer Case Gross Weight</b>	4.58 kg		
	<b>Outer Case Net Weight</b>	4.2 kg		
PALLET INFORMATION	Inner Component		Inner Pack	
	<b>Inner Component Depth</b>	164 mm	<b>Inner Pack Depth</b>	164 mm
	<b>Inner Component Width</b>	123 mm	<b>Inner Pack Width</b>	123 mm
	<b>Inner Component Height</b>	35 mm	<b>Inner Pack Height</b>	35 mm
	Outer Case			
	<b>Outer Case Depth</b>	320 mm		
	<b>Outer Case Width</b>	240 mm		
	<b>Outer Case Height</b>	105 mm		
	<b>Quantity of Cases Per Pallet Layer</b>	14 Cases	<b>Pallet Type</b>	Euro Pallet
	<b>Quantity of Layers Per Pallet</b>	12 Layers	<b>Pallet Height</b>	1.4 MTR
	<b>Quantity of Cases Per Pallet</b>	168 Cases	<b>Pallet Gross Weight</b>	798.41 kg

PACKAGING

Inner Component Packaging

Type	Materials	Weight	Recycled Plastic %	Recyclable	Returnable	Composite
Poly Treated PET/PE	Plastic	18 g	30.00 %			

Outer Case Packaging

Type	Materials	Weight	Recycled Plastic %	Recyclable	Returnable	Composite
Case	Plastic	1 g	- %			
Case	Paper/Cardboard	162 g	- %			

Transport Packaging

Type	Materials	Weight	Recycled Plastic %	Recyclable	Returnable	Composite
Other	Plastic	428 g	- %			
Other	Wood	28000 g	- %			

MARKETING INFORMATION

Marketing Description

Minced Beef cooked with onions, tomatoes, herbs with layers of cooked pasta and topped with white sauce

SAFETY & WARNINGS

OTHER INFORMATION

Intrastat/Taric Code	0	Identification/Health Marks	UK RX014
		Value Added Tax Rate	0%

CONTACT INFORMATION

ADDRESS
---------

Caterfood Buying Group  
BFS Group Ltd  
814 Leigh Road  
Slough  
Berkshire  
SL1 4BD  
United Kingdom

The information on the [Erudus System](#) has been supplied by the manufacturers of the products and, whilst the owners of the Erudus System take steps to ensure the information is regularly updated, they give no warranty and no guarantee that the information is accurate. Product information and ingredients may change, please always read product labels carefully in addition to using the information provided by Erudus.

We do not accept liability for any inaccuracies or incorrect information contained on this site.  
Please visit <http://www.erudus.com/terms-and-conditions> for full terms and conditions.