

This specification is published by [Erudus](#) for Caterfood Buying Group

# Caterfood Select Beef Lasagne 8 x 500g

Caterfood Select Beef Lasagne 8x500g

## PRODUCT DESCRIPTION

Minced Beef cooked with onions, tomatoes, herbs with layers of cooked pasta and topped with white sauce

|                      |                                  |
|----------------------|----------------------------------|
| Brand                | Caterfood Buying Group           |
| Label Own Label Code | C20119                           |
| Product Type         | Food                             |
| Product Category     | Ready Meals                      |
| Storage Type         | Frozen                           |
| Erudus ID            | af2a5918109d4cb4bcdfe2d48a1c0111 |
| Specification Type   | Generic                          |
| Outer Case GTIN      | 5056750402514                    |



## INGREDIENTS

**Ingredient Declaration**  
Lasagne Meat Sauce (56%) (Water, Onions, Minced Beef (19%), Chopped Tomatoes, Tomato Purée, Modified Maize Starch, Beef Stock (Salt, Glucose Syrup, Flavourings, Maltodextrin, Yeast Extract, Beef, Rapeseed Oil, Onions, Tomato, Carrots Extract, Herbs, Spices, Garlic, Colour: Ammonia Caramel; Sugar), Garlic Purée, Oregano, Mixed Herbs, Ground Black Pepper), White Sauce (36%) (Water, Whole **MILK** Powder, Waxy Maize Starch, Cream Powder (**MILK**), Salt, Onion Powder, Modified Maize Starch, Yeast Extract, Ground **CELERY**, Ground Nutmeg, Ground White Pepper), Cooked Lasagne Pasta (8%)(Durum **WHEAT** Semolina,Water).

## ALLERGENS

|                                      |             |
|--------------------------------------|-------------|
| Product Contains:                    |             |
| Celery/Celeriac                      | Yes         |
| Cereals Containing Gluten            | Yes         |
| Barley                               | May Contain |
| Oats                                 | May Contain |
| Rye                                  | May Contain |
| Wheat (including Spelt and Khorasan) | Yes         |
| Crustacea                            | May Contain |
| Eggs                                 | May Contain |
| Fish                                 | May Contain |
| Lupin                                | No          |
| Milk                                 | Yes         |
| Molluscs                             | May Contain |
| Mustard                              | May Contain |
| Nuts (Tree)                          | May Contain |
| Almond nuts                          | May Contain |
| Brazil nuts                          | May Contain |
| Cashew nuts                          | May Contain |
| Hazelnuts                            | May Contain |
| Macadamia (Queensland) nuts          | May Contain |
| Pecan nuts                           | May Contain |
| Pistachio nuts                       | May Contain |
| Walnuts                              | May Contain |
| Peanuts                              | May Contain |
| Sesame Seeds                         | May Contain |
| Soybeans                             | May Contain |
| Sulphur Dioxide and Sulphites        | May Contain |

SUPPLEMENTARY  
INGREDIENT  
INFORMATION

ADDITIVES

DIET SUITABILITY

NUTRITIONAL  
INFORMATION AS  
SOLD

Risk Source:

|   |              |
|---|--------------|
| Barley (Risk Source)                        | Raw Material |
| Rye (Risk Source)                           | Raw Material |
| Eggs (Risk Source)                          | Raw Material |
| Molluscs (Risk Source)                      | Raw Material |
| Tree Nuts (Risk Source)                     | Raw Material |
| Brazil nuts (Risk Source)                   | Raw Material |
| Hazelnuts (Risk Source)                     | Raw Material |
| Pecan nuts (Risk Source)                    | Raw Material |
| Walnuts (Risk Source)                       | Raw Material |
| Sesame Seeds (Risk Source)                  | Raw Material |
| Sulphur Dioxide and Sulphites (Risk Source) | Raw Material |

|                              |              |
|------------------------------|--------------|
| Oats (Risk Source)           | Raw Material |
| Crustacea (Risk Source)      | Raw Material |
| Fish (Risk Source)           | Raw Material |
| Mustard (Risk Source)        | Raw Material |
| Almond nuts (Risk Source)    | Raw Material |
| Cashew nuts (Risk Source)    | Raw Material |
| Macadamia nuts (Risk Source) | Raw Material |
| Pistachio nuts (Risk Source) | Raw Material |
| Peanuts (Risk Source)        | Raw Material |
| Soybeans (Risk Source)       | Raw Material |

Allergen Statement On Pack

For allergens, see ingredients in CAPITALS. May also contain cereals containing Gluten (From Rye, Barley, Oats), Crustaceans, Egg, Fish, Peanut, Soya, Nuts, Mustard, Sesame and Molluscs and Sulphites.

|                                |    |
|--------------------------------|----|
| Palm Oil                       | No |
| Hydrogenated Vegetable Oil/Fat | No |
| GM Protein/DNA                 | No |

Product Contains:

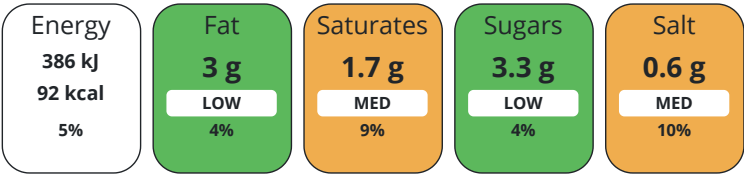
|                              |    |
|------------------------------|----|
| Artificial Antioxidants      | No |
| Artificial Colours           | No |
| Artificial Flavour Enhancers | No |

|                          |    |
|--------------------------|----|
| Artificial Flavourings   | No |
| Artificial Preservatives | No |
| Artificial Sweeteners    | No |

|            |    |
|------------|----|
| Vegan Diet | No |
| Halal Diet | No |

|                 |    |
|-----------------|----|
| Vegetarian Diet | No |
| Kosher Diet     | No |

Each 100g/ml portion contains:



of your reference intake.

Typical values per 100g/ml : Energy 92kcal / 386kJ

| Nutrient                  | per 100g | RI per 100g | per 500g serving | RI per 500g serving |
|---------------------------|----------|-------------|------------------|---------------------|
| Energy (kJ)               | 386 kJ   | 5%          | 1930 kJ          | 23%                 |
| Energy (kcal)             | 92 kcal  | 5%          | 460 kcal         | 23%                 |
| Fat                       | 3 g      | 4%          | 15 g             | 21%                 |
| of which Saturates        | 1.7 g    | 9%          | 8.5 g            | 43%                 |
| of which Mono-unsaturates | 1.2 g    |             | 6 g              |                     |
| of which Polyunsaturates  | 0.1 g    |             | 0.5 g            |                     |
| Carbohydrate              | 12 g     | 5%          | 60 g             | 23%                 |
| of which Sugars           | 3.3 g    | 4%          | 16.5 g           | 18%                 |
| Fibre                     | 0.9 g    |             | 4.5 g            |                     |
| Protein                   | 3.8 g    | 8%          | 19 g             | 38%                 |
| Salt                      | 0.6 g    | 10%         | 3 g              | 50%                 |
| Sodium                    | 251.3 mg |             | 1256.5 mg        |                     |
| Serving Size              | 500 g    |             |                  |                     |

## VITAMINS AND MINERALS AS SOLD

| Source of Nutritional Information |          | Calculation from known/accepted datasets |                  |                     |
|-----------------------------------|----------|--|------------------|---------------------|
| Nutrient                          | per 100g | RI per 100g                              | per 500g serving | RI per 500g serving |
| Magnesium                         | 0 mg     |  | 0 mg             |                     |

SUPPLEMENTARY  
NUTRITIONAL  
INFORMATION

|             |            |
|-------------|------------|
| Fibre Type  | Fibre AOAC |
| HFSS Status | No         |
| HFSS Score  | 0          |

## HANDLING & STORAGE INFORMATION

### Directions For Use

Cooking Guidelines: All appliances vary the following are guidelines only. Microwave from Frozen (900 Watt Category E ). Remove film and transfer product to a suitable microwavable dish and cover with suitable cling film. Heat on full power for 9 minutes.

Ensure food is piping hot thoroughly before serving. Do not reheat.

### Storage Instructions

Keep frozen at -18c or below

|   |          |
|---|----------|
| <b>Shelf Life from Time of Production</b> | 365 Days |
|---|----------|

ACCREDITATIONS/  
CERTIFICATIONS/  
ASSURANCE  
SCHEMES  
ORIGIN

|                                  |                |                   |  |
|----------------------------------|----------------|-------------------|--|
| BRCGS Certified                  |                | BRCGS Food Safety |  |
| Other Accreditation              |                |                   |  |
| Product Country of Origin        | United Kingdom |                   |  |
| Additional Origin Details        |                |                   |  |
| Produced in Wales                |                |                   |  |
| Origin of the Primary Ingredient | United Kingdom |                   |  |

## PRODUCT CHARACTERISTICS

|   |             |             |                                   |         |                  |
|---|-------------|-------------|-----------------------------------|---------|------------------|
| Standards Testing   |             |             |                                   |         |                  |
| Do you undertake trend analysis of microbiological results? |             | Yes         | Is shelf life testing undertaken? |         | No               |
|   |             |             | Commercially Sterile              |         | No               |
| Microbiological Standards                                   |             |             |                                   |         |                  |
| Organism  | Description | Frequency   | Target                            | Maximum | Sample (g or ml) |
| Enterobacteriaceae (cfu/g or ml)                            |             | Every Batch | <100                              | 10000   | 100              |

| Organism                              | Description | Frequency   | Target | Maximum | Sample (g or ml) |
|---------------------------------------|-------------|-------------|--------|---------|------------------|
| E. Coli (cfu/g or ml)                 |             | Every Batch | <10    | 100     | 100              |
| Staphylococcus Aureus (cfu/g or ml)   |             | Every Batch | <20    | 10000   | 100              |
| Salmonella (cfu/g or ml)              |             | Every Batch | =0     | 0       | 25               |
| Listeria Monocytogenes (cfu/g or ml)  |             | Every Batch | =0     | 0       | 25               |
| Clostridium Perfringens (cfu/g or ml) |             | Every Batch | <10    | 100     | 100              |
| Bacillus Cereus (cfu/g or ml)         |             | Every Batch | <20    | 10000   | 100              |

ORGANOLEPTICS

Appearance

Top is a layer of creamy white sauce, appears thick in consistency, evenly spread. Layers of flat, wide pasta sheets alternated with a mince beef in a dark, red tomato sauce, diced onions, medium/thick consistency

Aroma

Complex blend of a savoury and aromatic notes.

Taste

Savoury beef with tomato sauce with diced onions with notes of mixed herbs.

Texture

Mince beef blend and tomato sauce ,soft to bite. Low resinstance. Overall consistency is medium to thick with particulates.

HAZARD CONTROLS

|                    |   |           |                                  |             |
|--------------------|---|-----------|----------------------------------|-------------|
| CONFIGURATION      | <b>Metal Detection</b>                                  | Yes       |                                  |             |
|                    | Case Configuration                                      |           | Inner Pack Configuration         |             |
|                    | <b>Total Quantity of Inner Components in Outer Case</b> | 8 Units   | <b>Is Inner Pack Splittable?</b> | No          |
|                    | <b>Total Quantity of Inner Packs in Outer Case</b>      | 8 Units   |                                  |             |
|                    | <b>Is the Outer Case Splittable?</b>                    | No        |                                  |             |
| PRODUCT WEIGHTS    | Inner Component   |           |                                  |             |
|                    | <b>Variable Weight Consumer Item</b>                    | No        |                                  |             |
|                    | <b>Inner Component Weight</b>                           | 500 g     |                                  |             |
|                    | <b>e mark</b>   | No        |                                  |             |
|                    | Outer Case  |           |                                  |             |
| PRODUCT DIMENSIONS | <b>Outer Case Gross Weight</b>                          | 4.34 kg   |                                  |             |
|                    | <b>Outer Case Net Weight</b>                            | 4 kg      |                                  |             |
|                    | Inner Component   |           | Inner Pack                       |             |
|                    | <b>Inner Component Depth</b>                            | 164 mm    | <b>Inner Pack Depth</b>          | 164 mm      |
|                    | <b>Inner Component Width</b>                            | 123 mm    | <b>Inner Pack Width</b>          | 123 mm      |
|                    | <b>Inner Component Height</b>                           | 35 mm     | <b>Inner Pack Height</b>         | 35 mm       |
|                    | Outer Case  |           |                                  |             |
|                    | <b>Outer Case Depth</b>                                 | 320 mm    |                                  |             |
|                    | <b>Outer Case Width</b>                                 | 240 mm    |                                  |             |
|                    | <b>Outer Case Height</b>                                | 105 mm    |                                  |             |
| PALLET INFORMATION | <b>Quantity of Cases Per Pallet Layer</b>               | 14 Cases  | <b>Pallet Type</b>               | Euro Pallet |
|                    | <b>Quantity of Layers Per Pallet</b>                    | 12 Layers | <b>Pallet Height</b>             | 1.4 MTR     |
|                    | <b>Quantity of Cases Per Pallet</b>                     | 168 Cases | <b>Pallet Gross Weight</b>       | 758.09 kg   |

PACKAGING

Inner Component Packaging

| Type                | Materials | Weight | Recycled Plastic % | Recyclable | Returnable | Composite |
|---------------------|-----------|--------|--------------------|------------|------------|-----------|
| Poly Treated PET/PE | Plastic   | 18 g   | 30.00 %            |            |            |           |

Outer Case Packaging

| Type | Materials       | Weight | Recycled Plastic % | Recyclable | Returnable | Composite |
|------|-----------------|--------|--------------------|------------|------------|-----------|
| Case | Plastic         | 1 g    | - %                |            |            |           |
| Case | Paper/Cardboard | 162 g  | - %                |            |            |           |

Transport Packaging

| Type  | Materials | Weight  | Recycled Plastic % | Recyclable | Returnable | Composite |
|-------|-----------|---------|--------------------|------------|------------|-----------|
| Other | Plastic   | 428 g   | - %                |            |            |           |
| Other | Wood      | 28000 g | - %                |            |            |           |

MARKETING INFORMATION

Marketing Description

Minced Beef cooked with onions, tomatoes, herbs with layers of cooked pasta and topped with white sauce

SAFETY & WARNINGS

OTHER INFORMATION

|                      |   |                             |          |
|----------------------|---|-----------------------------|----------|
| Intrastat/Taric Code | 0 | Identification/Health Marks | UK RX014 |
|                      |   | Value Added Tax Rate        | 0%       |

CONTACT INFORMATION

| ADDRESS |
|---------|
|---------|

Caterfood Buying Group  
BFS Group Ltd  
814 Leigh Road  
Slough  
Berkshire  
SL1 4BD  
United Kingdom

The information on the [Erudus System](#) has been supplied by the manufacturers of the products and, whilst the owners of the Erudus System take steps to ensure the information is regularly updated, they give no warranty and no guarantee that the information is accurate. Product information and ingredients may change, please always read product labels carefully in addition to using the information provided by Erudus.

We do not accept liability for any inaccuracies or incorrect information contained on this site.  
Please visit <http://www.erudus.com/terms-and-conditions> for full terms and conditions.