

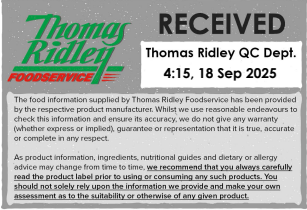
Changed Sep 18, 2025 00:00

Reviewed Sep 17, 2025 12:08

Erudus ID ece16dd851974a27b80737c06782c875

Version 2.1

Status Published



This specification is published by [Erudus](#) for Caterfood Buying Group

Caterfood Select Chicken Tikka Masala 12 x 350g

Caterfood Select Chicken Tikka Masala 12x350g

PRODUCT DESCRIPTION

Chicken breast pieces cooked in a masala sauce made with cream and coconut cream

Brand	Caterfood Buying Group
Label Own Label Code	C20121
Product Type	Food
Product Category	Ready Meals
Storage Type	Frozen
Erudus ID	ece16dd851974a27b80737c06782c875
Specification Type	Generic
Outer Case GTIN	5056750402538



INGREDIENTS

Ingredient Declaration

Diced Chicken Breast (28%), Water, Diced Onions, Tomato Sauce (Tomatoes, Salt, Acidity Regulator: Citric Acid), Tikka Masala Paste (Water, Coriander, Salt, Rapeseed Oil, Dehydrated Red Bell Pepper, Cumin, Paprika, Turmeric, Tomato Powder, Tamarind Paste, Acidity Regulator: Citric Acid, Natural Flavourings, Garlic, Ginger, Chilli Pepper, Black Pepper, Flavourings, Cinnamon, Ground Cardamom, Colours: Paprika Extract, Beetroot Red, Beta Carotene; Dried Onion, Cassia, Fenugreek, Ground Clove, Cayenne Pepper, Ground Bay Leaf, Ground Nutmeg, Fennel, Pimento), Cream (**MILK**) (7%), Coconut Cream (5%) (Coconut Cream, Preservative: **SULPHUR DIOXIDE**), Tomato Purée, Sugar, Modified Maize Starch.

Ingredient Statements

Although every care has been taken to remove bones, some bones may remain

ALLERGENS

Product Contains:

Celery/Celeriac	May Contain
Cereals Containing Gluten	May Contain
Barley	May Contain
Oats	May Contain
Rye	May Contain
Wheat (including Spelt and Khorasan)	May Contain
Crustacea	May Contain
Eggs	May Contain
Fish	May Contain
Lupin	No
Milk	Yes
Molluscs	May Contain

Mustard	May Contain
Nuts (Tree)	May Contain
Almond nuts	May Contain
Brazil nuts	May Contain
Cashew nuts	May Contain
Hazelnuts	May Contain
Macadamia (Queensland) nuts	May Contain
Pecan nuts	May Contain
Pistachio nuts	May Contain
Walnuts	May Contain
Peanuts	May Contain
Sesame Seeds	May Contain
Soybeans	May Contain
Sulphur Dioxide and Sulphites	Yes

SUPPLEMENTARY
INGREDIENT
INFORMATION

ADDITIVES

DIET SUITABILITY

NUTRITIONAL
INFORMATION AS
SOLD

Risk Source:

Barley (Risk Source)	Raw Material
Rye (Risk Source)	Raw Material
Crustacea (Risk Source)	Raw Material
Fish (Risk Source)	Raw Material
Mustard (Risk Source)	Raw Material
Almond nuts (Risk Source)	Raw Material
Cashew nuts (Risk Source)	Raw Material
Macadamia nuts (Risk Source)	Raw Material
Pistachio nuts (Risk Source)	Raw Material
Peanuts (Risk Source)	Raw Material
Soybeans (Risk Source)	Raw Material

Allergen Statement On Pack

For allergens, see ingredients in CAPITALS. May also contain cereals containing Gluten (From Wheat, Rye, Barley Oats), Crustaceans, Egg, Fish, Peanut, Soya, Nuts, Celery, Mustard, Sesame and Molluscs.

Palm Oil	No
Hydrogenated Vegetable Oil/Fat	No
GM Protein/DNA	No

Product Contains:

Artificial Antioxidants	No
Artificial Colours	No
Artificial Flavour Enhancers	No

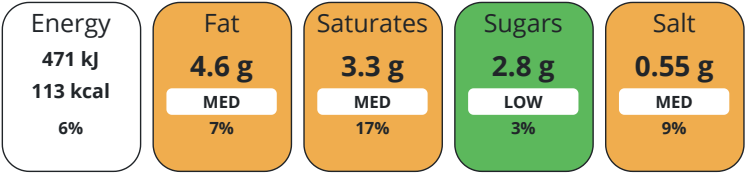
Vegan Diet	No
Halal Diet	No

Cereals Containing Gluten (Risk Source)	Raw Material
Oats (Risk Source)	Raw Material
Eggs (Risk Source)	Raw Material
Molluscs (Risk Source)	Raw Material
Tree Nuts (Risk Source)	Raw Material
Brazil nuts (Risk Source)	Raw Material
Hazelnuts (Risk Source)	Raw Material
Pecan nuts (Risk Source)	Raw Material
Walnuts (Risk Source)	Raw Material
Sesame Seeds (Risk Source)	Raw Material

Artificial Flavourings	No
Artificial Preservatives	No
Artificial Sweeteners	No

Vegetarian Diet	No
Kosher Diet	No

Each 100g/ml portion contains:



of your reference intake.

Typical values per 100g/ml : Energy 113kcal / 471kJ

Organism	Description	Frequency	Target	Maximum	Sample (g or ml)
Enterobacteriaceae (cfu/g or ml)		Every Batch	<100	10000	100
E. Coli (cfu/g or ml)		Every Batch	<10	100	100
Staphylococcus Aureus (cfu/g or ml)		Every Batch	<20	10000	100
Salmonella (cfu/g or ml)		Every Batch	=0	0	25
Listeria Monocytogenes (cfu/g or ml)		Every Batch	=0	0	25
Clostridium Perfringens (cfu/g or ml)		Every Batch	<10	100	100

ORGANOLEPTICS

Appearance

Chunks of chicken breast in masala sauce (orange/red sauce) with visual pieces of chicken present

Aroma

Fragrant creamy and savoury chicken notes

Taste

Mild heat, creamy coconut sauce with strong savoury chicken notes with hints of onion

Texture

Sauce is creamy and thick, but pourable consistency. Chicken has medium resistance.

HAZARD CONTROLS

Metal Detection		Yes	
Case Configuration		Inner Pack Configuration	
Total Quantity of Inner Components in Outer Case	12 Units	Is Inner Pack Splittable?	No
Total Quantity of Inner Packs in Outer Case	12 Units		
Is the Outer Case Splittable?	No		
Inner Component		Inner Pack	
Variable Weight Consumer Item	No	Inner Pack Gross Weight	368 g
Inner Component Weight	350 g	Inner Pack Net Weight	350 g
e mark	No		
Outer Case			
Outer Case Gross Weight	4.58 kg		
Outer Case Net Weight	4.2 kg		
Inner Component		Inner Pack	
Inner Component Depth	164 mm	Inner Pack Depth	164 mm
Inner Component Width	124 mm	Inner Pack Width	124 mm
Inner Component Height	35 mm	Inner Pack Height	35 mm
Outer Case			
Outer Case Depth	320 mm		
Outer Case Width	240 mm		
Outer Case Height	105 mm		
Quantity of Cases Per Pallet Layer	14 Cases	Pallet Type	Euro Pallet
Quantity of Layers Per Pallet	12 Layers	Pallet Height	1.4 MTR
Quantity of Cases Per Pallet	168 Cases	Pallet Gross Weight	798.41 kg

PACKAGING

Inner Component Packaging

Type	Materials	Weight	Recycled Plastic %	Recyclable	Returnable	Composite
Poly Treated PET/PE	Plastic	18 g	30.00 %			

Outer Case Packaging

Type	Materials	Weight	Recycled Plastic %	Recyclable	Returnable	Composite
Case	Plastic	1 g	- %			
Case	Paper/Cardboard	162 g	- %			

Transport Packaging

Type	Materials	Weight	Recycled Plastic %	Recyclable	Returnable	Composite
Other	Plastic	428 g	- %			
Other	Wood	28000 g	- %			

MARKETING INFORMATION

Marketing Description

Chicken breast pieces cooked in a masala sauce made with cream and coconut cream

SAFETY & WARNINGS

OTHER INFORMATION

Intrastat/Taric Code	0	Identification/Health Marks	UK RX014
		Value Added Tax Rate	0%

CONTACT INFORMATION

ADDRESS

Caterfood Buying Group
BFS Group Ltd
814 Leigh Road
Slough
Berkshire
SL1 4BD
United Kingdom

The information on the [Erudus System](#) has been supplied by the manufacturers of the products and, whilst the owners of the Erudus System take steps to ensure the information is regularly updated, they give no warranty and no guarantee that the information is accurate. Product information and ingredients may change, please always read product labels carefully in addition to using the information provided by Erudus.

We do not accept liability for any inaccuracies or incorrect information contained on this site.
Please visit <http://www.erudus.com/terms-and-conditions> for full terms and conditions.