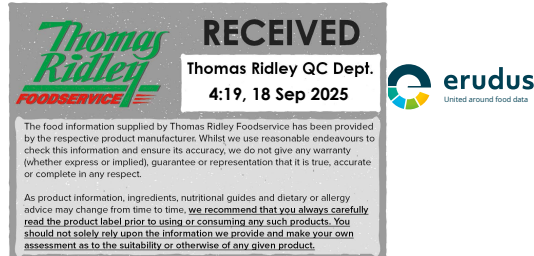


Reviewed Sep 17, 2025 12:16

Erudus ID 1e9d26a4980a466a9c0786900785849a

Version 2.1

Status Published



This specification is published by [Erudus](#) for Caterfood Buying Group

Caterfood Select Macaroni Cheese 12 x 400g

Caterfood Select Macaroni Cheese 12x400g

PRODUCT DESCRIPTION

Cooked Pasta with mature cheddar cheese sauce.

Brand	Caterfood Buying Group
Label Own Label Code	C20124
Product Type	Food
Product Category	Ready Meals
Storage Type	Frozen
Erudus ID	1e9d26a4980a466a9c0786900785849a
Specification Type	Generic

Outer Case GTIN 5056750402569



INGREDIENTS

Ingredient Declaration

Cheese Sauce (63%) (Water, Bechamel Sauce Powder (Whole **MILK** Powder, Maize Starch, Cream Powder (**MILK**), Salt, Onion Powder, Yeast Extract, Ground **CELERY**, Ground Nutmeg, Ground White Pepper), Cheddar Cheese (MILK) (10%), Cream (**MILK**), Cheese Stock (Dried Glucose Syrup, Cheese Powder (**MILK**), Yeast Extract, Salt, Flavouring (**MILK**), Rapeseed Oil), Garlic Purée, Ground White Pepper), Cooked Pasta (37%) (Water, Durum **WHEAT** Semolina).

ALLERGENS

Product Contains:

Celery/Celeriac	Yes
Cereals Containing Gluten	Yes
Barley	May Contain
Oats	May Contain
Rye	May Contain
Wheat (including Spelt and Khorasan)	Yes
Crustacea	May Contain
Eggs	May Contain
Fish	May Contain
Lupin	No
Milk	Yes
Molluscs	May Contain

Mustard	May Contain
Nuts (Tree)	May Contain
Almond nuts	May Contain
Brazil nuts	May Contain
Cashew nuts	May Contain
Hazelnuts	May Contain
Macadamia (Queensland) nuts	May Contain
Pecan nuts	May Contain
Pistachio nuts	May Contain
Walnuts	May Contain
Peanuts	May Contain
Sesame Seeds	May Contain
Soybeans	May Contain
Sulphur Dioxide and Sulphites	May Contain

SUPPLEMENTARY
INGREDIENT
INFORMATION

ADDITIVES

DIET SUITABILITY

NUTRITIONAL
INFORMATION AS
SOLD

Risk Source:

Barley (Risk Source)	Raw Material
Rye (Risk Source)	Raw Material
Eggs (Risk Source)	Raw Material
Molluscs (Risk Source)	Raw Material
Tree Nuts (Risk Source)	Raw Material
Brazil nuts (Risk Source)	Raw Material
Hazelnuts (Risk Source)	Raw Material
Pecan nuts (Risk Source)	Raw Material
Walnuts (Risk Source)	Raw Material

Sulphur Dioxide and Sulphites (Risk Source)	Raw Material
---	--------------

Allergen Statement On Pack

For allergens, see ingredients in CAPITALS. May also contain cereals containing Gluten (from Rye, Barley, Oats), Crustaceans, Egg, Fish, Peanuts, Soya, Nuts, Mustard, Sesame< Mollusca and Sulphites.

Palm Oil	No
Hydrogenated Vegetable Oil/Fat	No
GM Protein/DNA	No

Product Contains:

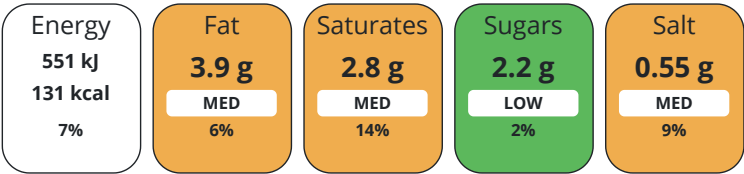
Artificial Antioxidants	No
Artificial Colours	No
Artificial Flavour Enhancers	No

Vegan Diet	No
Halal Diet	No

Oats (Risk Source)	Raw Material
Crustacea (Risk Source)	Raw Material
Fish (Risk Source)	Raw Material
Mustard (Risk Source)	Raw Material
Almond nuts (Risk Source)	Raw Material
Cashew nuts (Risk Source)	Raw Material
Macadamia nuts (Risk Source)	Raw Material
Pistachio nuts (Risk Source)	Raw Material
Peanuts (Risk Source)	Raw Material
Soybeans (Risk Source)	Raw Material

Artificial Flavourings	No
Artificial Preservatives	No
Artificial Sweeteners	No
Vegetarian Diet	Suitable for
Kosher Diet	No

Each 100g/ml portion contains:



of your reference intake.

Typical values per 100g/ml : Energy 131kcal / 551kJ

SUPPLEMENTARY
NUTRITIONAL
INFORMATION

HFSS (HIGH IN
FAT, SALT AND
SUGAR)

HANDLING &
STORAGE
INFORMATION

ACCREDITATIONS/
CERTIFICATIONS/
ASSURANCE
SCHEMES
ORIGIN

PRODUCT
CHARACTERISTICS

Nutrient	per 100g	RI per 100g	per 400g serving	RI per 400g serving	
Energy (kJ)	551 kJ	7%	2204 kJ	26%	
Energy (kcal)	131 kcal	7%	524 kcal	26%	
Fat	3.9 g	6%	15.6 g	22%	
of which Saturates	2.8 g	14%	11.2 g	56%	
of which Mono-unsaturates	0.9 g		3.6 g		
of which Polyunsaturates	0.2 g		0.8 g		
Carbohydrate	19.1 g	7%	76.4 g	29%	
of which Sugars	2.2 g	2%	8.8 g	10%	
Fibre	0.9 g		3.6 g		
Protein	4.7 g	9%	18.8 g	38%	
Salt	0.55 g	9%	2.2 g	37%	
Sodium	219.7 mg		878.8 mg		
Serving Size	400 g				
Source of Nutritional Information	Calculation from known/accepted datasets				
HFSS Status	No				
HFSS Score	3				
Directions For Use					
Cooking Guidelines: All appliances vary, the following are guidelines only. Microwave (900 Watt/Category E). Microwave from Frozen. Pierce film several times and microwave on full power for 3 minutes, shake Product from side to side and microwave on full power for a further 3 minutes Ensure the food is piping hot throughout before serving. Do Not reheat.					
Storage Instructions					
Keep frozen at -18c or below					
Shelf Life from Time of Production	365 Days				
BRCGS Certified		BRCGS Food Safety			
Other Accreditation					
Product Country of Origin	United Kingdom				
Additional Origin Details					
Produced in Wales					
Origin of the Primary Ingredient	United Kingdom				
Standards Testing					
Do you undertake trend analysis of microbiological results?	Yes	Is shelf life testing undertaken?	No		
		Commercially Sterile	No		
Microbiological Standards					
Organism	Description	Frequency	Target	Maximum	Sample (g or ml)
Enterobacteriaceae (cfu/g or ml)		Every Batch	<100	1000	100
E. Coli (cfu/g or ml)		Every Batch	<100	1000	100
Staphylococcus Aureus (cfu/g or ml)		Every Batch	<20	1000	100

	Organism		Description	Frequency	Target	Maximum	Sample (g or ml)
	Bacillus Cereus (cfu/g or ml)			Every Batch	<20	1000	100
	Salmonella (cfu/g or ml)			Every Batch	=0	0	25
	Listeria Monocytogenes (cfu/g or ml)			Every Batch	=0	0	25
	ORGANOLEPTICS						
	Appearance						
	Typical shape of Macaroni psta but smaller in size.Macaroni pasta formed as tubes with a smooth surface, extruded, in a smooth, creamy, white cheese sauce.						
	Aroma						
	Creamy aroma with hints of cheese						
	Taste						
Cooked pasts (starchy, mild neutral notes), sauce creamy and cheese notes.							
Texture							
Pasta soft to bite. Saucemedium/thick consistency, smooth mouthfeel.							
HAZARD CONTROLS							
CONFIGURATION	Metal Detection		Yes				
	Case Configuration		Inner Pack Configuration				
	Variable Inner Components in Outer Case		No				
	Total Quantity of Inner Components in Outer Case		12 Units				
	Is the Outer Case Splittable?		No				
PRODUCT WEIGHTS	Inner Component						
	Variable Weight Consumer Item		No				
	Inner Component Weight		400 g				
	e mark		No				
	Outer Case						
PRODUCT DIMENSIONS	Outer Case Gross Weight		5.26 kg				
	Outer Case Net Weight		4.8 kg				
	Inner Component						
	Inner Component Depth		164 mm				
	Inner Component Width		125 mm				
PALLET INFORMATION	Inner Component Height		52 mm				
	Outer Case						
	Outer Case Depth		330 mm				
	Outer Case Width		250 mm				
	Outer Case Height		170 mm				
PACKAGING	Quantity of Cases Per Pallet Layer		14 Cases		Pallet Type		UK Standard Pallet
	Quantity of Layers Per Pallet		8 Layers		Pallet Height		1.53 MTR
	Quantity of Cases Per Pallet		112 Cases		Pallet Gross Weight		617.13 kg
PACKAGING	Inner Component Packaging						
	Type	Materials	Weight	Recycled Plastic %	Recyclable	Returnable	Composite
	Poly Treated PET/PE	Plastic	17 g	30.00 %			

MARKETING INFORMATION

SAFETY & WARNINGS

OTHER INFORMATION

CONTACT INFORMATION

ADDRESS						
---------	--	--	--	--	--	--

Caterfood Buying Group
BFS Group Ltd
814 Leigh Road
Slough
Berkshire
SL1 4BD
United Kingdom

Outer Case Packaging

Type	Materials	Weight	Recycled Plastic %	Recyclable	Returnable	Composite
Case	Plastic	1 g	- %			
Case	Paper/Cardboard	151 g	- %			

Transport Packaging

Type	Materials	Weight	Recycled Plastic %	Recyclable	Returnable	Composite
Other	Plastic	428 g	- %			
Other	Wood	28000 g	- %			

Marketing Description

Cooked Pasta with mature cheddar cheese sauce.

Intrastat/Taric Code	0	Identification/Health Marks	UK RX014
		Value Added Tax Rate	0%

The information on the [Erudus System](#) has been supplied by the manufacturers of the products and, whilst the owners of the Erudus System take steps to ensure the information is regularly updated, they give no warranty and no guarantee that the information is accurate. Product information and ingredients may change, please always read product labels carefully in addition to using the information provided by Erudus.

We do not accept liability for any inaccuracies or incorrect information contained on this site.
Please visit <http://www.erudus.com/terms-and-conditions> for full terms and conditions.