

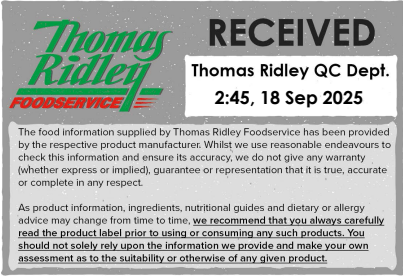
Changed Sep 18, 2025 00:00

Reviewed Sep 17, 2025 12:06

Erudus ID 178735c8b0ef4a1dba49aab0f5b0f163

Version 2.1

Status Published



This specification is published by [Erudus](#) for Caterfood Buying Group

Caterfood Select Vegetable Lasagne 12 x 350g

Caterfood Select Vegetable Lasagne 12x350g

PRODUCT DESCRIPTION

Mixed vegetables in tomato and herb sauce, with layers of cooked pasta and topped with white sauce

Brand	Caterfood Buying Group
Label Own Label Code	C20123
Product Type	Food
Product Category	Ready Meals
Storage Type	Frozen
Erudus ID	178735c8b0ef4a1dba49aab0f5b0f163
Specification Type	Generic

Outer Case GTIN 5056750402552



INGREDIENTS

Ingredient Declaration

Vegetable Sauce (57%) (Chopped Tomatoes (33%), Mixed Vegetables (30%) (Onions, Red and Green Peppers, Aubergines, Courgettes, Mushrooms), Water, Modified Maize Starch, Rapeseed Oil, Tomato Purée, Basil, Vegetable Stock (Dried Glucose Syrup, Yeast Extract, Salt, Sugar, Chicory Extract, Onion Powder, Carrot Juice Powder, Tomato Powder, Natural Flavouring, Lovage, Rapeseed Oil), Brown Sugar (Cane Sugar, Sugar), Garlic Purée, Ground Black Pepper, Oregano). White Sauce (31%) (Water, Whole **MILK** Powder, Waxy Maize Starch, Cream Powder (**MILK**), Salt, Onion Powder, Modified Maize Starch, Yeast Extract, Ground **CELERY**, Ground Nutmeg, Ground White Pepper), Cooked Lasagne Pasta (11%) (Durum **WHEAT** Semolina, Water).

ALLERGENS

<i>Product Contains:</i>	
Celery/Celeriac	Yes
Cereals Containing Gluten	Yes
Barley	May Contain
Oats	May Contain
Rye	May Contain
Wheat (including Spelt and Khorasan)	Yes
Crustacea	May Contain
Eggs	May Contain
Fish	May Contain
Lupin	No
Milk	Yes
Molluscs	May Contain
Mustard	May Contain
Nuts (Tree)	May Contain
Almond nuts	May Contain
Brazil nuts	May Contain
Cashew nuts	May Contain
Hazelnuts	May Contain
Macadamia (Queensland) nuts	May Contain
Pecan nuts	May Contain
Pistachio nuts	May Contain
Walnuts	May Contain
Peanuts	May Contain
Sesame Seeds	May Contain
Soybeans	May Contain
Sulphur Dioxide and Sulphites	May Contain

SUPPLEMENTARY
INGREDIENT
INFORMATION

ADDITIVES

DIET SUITABILITY

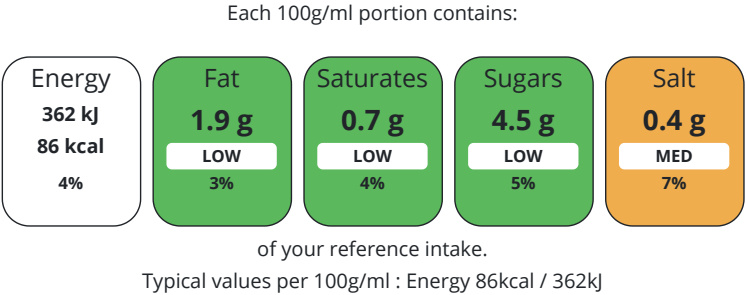
NUTRITIONAL
INFORMATION AS
SOLD

Risk Source:			
Barley (Risk Source)	Raw Material	Oats (Risk Source)	Raw Material
Rye (Risk Source)	Raw Material	Crustacea (Risk Source)	Raw Material
Eggs (Risk Source)	Raw Material	Fish (Risk Source)	Raw Material
Molluscs (Risk Source)	Raw Material	Mustard (Risk Source)	Raw Material
Tree Nuts (Risk Source)	Raw Material	Almond nuts (Risk Source)	Raw Material
Brazil nuts (Risk Source)	Raw Material	Cashew nuts (Risk Source)	Raw Material
Hazelnuts (Risk Source)	Raw Material	Macadamia nuts (Risk Source)	Raw Material
Pecan nuts (Risk Source)	Raw Material	Pistachio nuts (Risk Source)	Raw Material
Walnuts (Risk Source)	Raw Material	Peanuts (Risk Source)	Raw Material
Sesame Seeds (Risk Source)	Raw Material	Soybeans (Risk Source)	Raw Material
Sulphur Dioxide and Sulphites (Risk Source)	Raw Material		

Allergen Statement On Pack

For allergens, see ingredients in CAPITALS. May also contain cereals containing Gluten (From Rye, Barley, Oats), Crustaceans, Egg, Fish, Peanut, Soya, Nuts, Mustard, Sesame and Molluscs and Sulphites.

Palm Oil	No		
Hydrogenated Vegetable Oil/Fat	No		
GM Protein/DNA	No		
Product Contains:			
Artificial Antioxidants	No	Artificial Flavourings	No
Artificial Colours	No	Artificial Preservatives	No
Artificial Flavour Enhancers	No	Artificial Sweeteners	No
Vegan Diet	No	Vegetarian Diet	Suitable for
Halal Diet	No	Kosher Diet	No



	Nutrient		per 100g	RI per 100g	per 350g serving	RI per 350g serving
	Energy (kJ)		362 kJ	4%	1267 kJ	15%
	Energy (kcal)		86 kcal	4%	301 kcal	15%
	Fat		1.9 g	3%	6.65 g	10%
	of which Saturates		0.7 g	4%	2.45 g	12%
	of which Mono-unsaturates		0.9 g		3.15 g	
	of which Polyunsaturates		0.3 g		1.05 g	
	Carbohydrate		14.1 g	5%	49.35 g	19%
	of which Sugars		4.5 g	5%	15.75 g	18%
	Fibre		1.1 g		3.85 g	
	Protein		2.5 g	5%	8.75 g	18%
	Salt		0.4 g	7%	1.4 g	23%
	Sodium		176 mg		616 mg	
	Serving Size		350 g			
	VITAMINS AND MINERALS AS SOLD	Source of Nutritional Information		Calculation from known/accepted datasets		
Nutrient		per 100g	RI per 100g	per 350g serving	RI per 350g serving	
Magnesium		0 mg		0 mg		
SUPPLEMENTARY NUTRITIONAL INFORMATION	Fibre Type		Fibre AOAC			
	HFSS Status		No			
	HFSS Score		0			
HANDLING & STORAGE INFORMATION	Directions For Use		Cooking Guidelines: All appliances vary the following are guidelines only. Microwave from Frozen (900 Watt/Category E). Remove film and transfer product to a suitable microwavable dish and cover with cling film. Heat on full power for 6 Minutes 30 seconds. Ensure food is piping hot throughout before serving. Do not reheat.			
	Storage Instructions		Keep frozen at -18c or below			
	Shelf Life from Time of Production		365 Days			
ACCREDITATIONS/ CERTIFICATIONS/ ASSURANCE SCHEMES ORIGIN	BRCGS Certified			BRCGS Food Safety		
	Other Accreditation					
	Product Country of Origin		United Kingdom			
	Additional Origin Details		Produced in Wales			
	Origin of the Primary Ingredient		China, Greece			
PRODUCT CHARACTERISTICS	Standards Testing					
	Do you undertake trend analysis of microbiological results?		Yes	Is shelf life testing undertaken?		No
				Commercially Sterile		No
	Microbiological Standards					
	Organism		Description	Frequency	Target	Maximum
	Enterobacteriaceae (cfu/g or ml)			Every Batch	<100	10000
						Sample (g or ml)
					100	

Organism	Description	Frequency	Target	Maximum	Sample (g or ml)
E. Coli (cfu/g or ml)		Every Batch	<10	100	100
Staphylococcus Aureus (cfu/g or ml)		Every Batch	<20	10000	100
Salmonella (cfu/g or ml)		Every Batch	=0	0	25
Listeria Monocytogenes (cfu/g or ml)		Every Batch	=0	0	25
Clostridium Perfringens (cfu/g or ml)		Every Batch	<10	100	100
Bacillus Cereus (cfu/g or ml)		Every Batch	<20	10000	100

ORGANOLEPTICS

Appearance

Top is a layer of creamy white sauce, appears thick in consistency, evenly spread. Layers of flat, wide pasta sheets alternated with a vegetable ratatouille, a red tomato sauce, with aubergine, courgette, peppers and mushrooms. Medium/thick consistency.

Aroma

Complex blend of mixed vegetables with a tomato and herby note.

Taste

Savoury notes from the vegetables with tomato and herby notes especially oregano from the sauce. White pasta has a starchy mild neutral notes. Sauce has a salty and mild notes.

Texture

Vegetables are low/medium resistance that breakdown easily. White sauce is thick and coats the mouth. Medium consistency. Pasta sheets are medium to high resistance that breakdown easily.

HAZARD CONTROLS

CONFIGURATION	Metal Detection	Yes		
	Case Configuration		Inner Pack Configuration	
	Total Quantity of Inner Components in Outer Case	12 Units	Is Inner Pack Splittable?	No
	Total Quantity of Inner Packs in Outer Case	12 Units		
PRODUCT WEIGHTS	Is the Outer Case Splittable?	No		
	Inner Component		Inner Pack	
	Variable Weight Consumer Item	No	Inner Pack Gross Weight	368 g
	Inner Component Weight	350 g	Inner Pack Net Weight	350 g
PRODUCT DIMENSIONS	e mark	No		
	Outer Case			
	Outer Case Gross Weight	4.58 kg		
	Outer Case Net Weight	4.2 kg		
	Inner Component		Inner Pack	
	Inner Component Depth	164 mm	Inner Pack Depth	164 mm
	Inner Component Width	123 mm	Inner Pack Width	123 mm
	Inner Component Height	35 mm	Inner Pack Height	35 mm
	Outer Case			
	Outer Case Depth	320 mm		
	Outer Case Width	240 mm		
	Outer Case Height	105 mm		

PALLET INFORMATION	Quantity of Cases Per Pallet Layer		14 Cases	Pallet Type		Euro Pallet	
	Quantity of Layers Per Pallet		12 Layers	Pallet Height		1.4 MTR	
	Quantity of Cases Per Pallet		168 Cases	Pallet Gross Weight		798.41 kg	
PACKAGING	Inner Component Packaging						
	Type	Materials	Weight	Recycled Plastic %	Recyclable	Returnable	Composite
	Poly Treated PET/PE	Plastic	18 g	30.00 %			
	Outer Case Packaging						
	Type	Materials	Weight	Recycled Plastic %	Recyclable	Returnable	Composite
	Case	Plastic	1 g	- %			
	Case	Paper/Cardboard	162 g	- %			
	Transport Packaging						
	Type	Materials	Weight	Recycled Plastic %	Recyclable	Returnable	Composite
	Other	Plastic	428 g	- %			
	Other	Wood	28000 g	- %			
MARKETING INFORMATION	Marketing Description						
	Mixed vegetables in tomato and herb sauce, with layers of cooked pasta and topped with white sauce						
SAFETY & WARNINGS							
OTHER INFORMATION	Intrastat/Taric Code		0	Identification/Health Marks		UK RX014	
				Value Added Tax Rate		0%	

CONTACT INFORMATION

ADDRESS

Caterfood Buying Group
BFS Group Ltd
814 Leigh Road
Slough
Berkshire
SL1 4BD
United Kingdom

The information on the [Erudus System](#) has been supplied by the manufacturers of the products and, whilst the owners of the Erudus System take steps to ensure the information is regularly updated, they give no warranty and no guarantee that the information is accurate. Product information and ingredients may change, please always read product labels carefully in addition to using the information provided by Erudus.

We do not accept liability for any inaccuracies or incorrect information contained on this site.
Please visit <http://www.erudus.com/terms-and-conditions> for full terms and conditions.