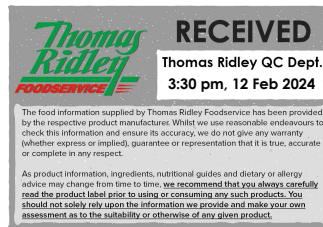


Changed Feb 12, 2024 14:14

Reviewed Feb 12, 2024 14:14

Erudus ID 119a6841d29c4e069df3184f5e1d246f

Version 2.0



Thomas Ridley
FOODSERVICE

RECEIVED
Thomas Ridley QC Dept.
3:30 pm, 12 Feb 2024

The food information supplied by Thomas Ridley Foodservice has been provided by the respective product manufacturers. Whilst we use reasonable endeavours to check this information and ensure its accuracy, we do not give any warranty (whether express or implied), guarantee or representation that it is true, accurate or complete in any respect.

As product information, ingredients, nutritional guides and dietary or allergy advice may change from time to time, we recommend that you always carefully read the product label prior to using or consuming any such products. You should not solely rely upon the information we provide and make your own assessment as to the suitability or otherwise of any given product.



Kellogg's Rice Krispies Bag Pack 4 x 400g

Rice Krispies Cereal 4x1.6kg

PRODUCT DESCRIPTION

Make breakfast Snap, Crackle and Pop with Kellogg's Rice Krispies cereal. Rice Krispies Cereal brings a classic taste to the breakfast table you and your family know and love. Rice Krispies brings a bowl full of fun to your breakfast, whether you're listening to the iconic Snap, Crackle and Pop of each grain of Rice Krispies, or discovering your inner baker with creative Rice Krispies recipes, Kellogg's Rice Krispies brings a Snap, Crackle, and Pop to your breakfast

Brand	Kellanova (previously Kellogg's)
Manufacturer Product Code	5147858000
Product Type	Food
Product Category	Breakfast Cereal
Storage Type	Ambient
Erudus ID	119a6841d29c4e069df3184f5e1d246f
Specification Type	Cereals



Inner Component GTIN	5050083478581
Outer Case GTIN	5050083478581



INGREDIENTS

Ingredient Declaration

Rice, sugar, salt, BARLEY malt extract, niacin, iron, vitamin B6, riboflavin, thiamin, folic acid, vitamin D, vitamin B12.

ALLERGENS

Product Contains:

Celery/Celeriac	No	Mustard	No
Cereals Containing Gluten	Yes	Nuts (Tree)	No
Barley	Yes	Almond nuts	No
Oats	No	Brazil nuts	No
Rye	No	Cashew nuts	No
Wheat (including Spelt and Khorasan)	No	Hazelnuts	No
Crustacea	No	Macadamia (Queensland) nuts	No
Eggs	No	Pecan nuts	No
Fish	No	Pistachio nuts	No
Lupin	No	Walnuts	No
Milk	No	Peanuts	No
Molluscs	No	Sesame Seeds	No
		Soybeans	No
		Sulphur Dioxide and Sulphites	No

SUPPLEMENTARY INGREDIENT INFORMATION

GM Protein/DNA	No
-----------------------	----

ADDITIVES

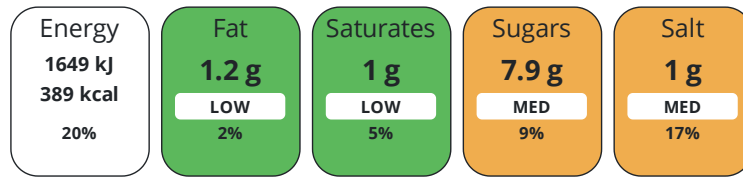
Product Contains:

DIET
SUITABILITY

Vegan Diet	No	Vegetarian Diet	Suitable for
Halal Diet	Suitable for	Kosher Diet	Suitable for

NUTRITIONAL
INFORMATION

Each 100g/ml portion contains:



of your reference intake.

Typical values per 100g/ml : Energy 389kcal / 1649kJ

Nutrient	per 100g	RI per 100g
Energy (kJ)	1649 kJ	20%
Energy (kcal)	389 kcal	19%
Fat	1.2 g	2%
of which Saturates	1 g	5%
Carbohydrate	86 g	33%
of which Sugars	7.9 g	9%
Fibre	2.9 g	
Protein	7 g	14%
Salt	1 g	17%

SUPPLEMENTARY
NUTRITIONAL
INFORMATION

HFSS (HIGH IN
FAT, SALT AND
SUGAR)
HANDLING &
STORAGE
INFORMATION

HFSS Status	Yes
--------------------	-----

Directions For Use

Eat as directed

Storage Instructions

Store in a cool dry place.

Shelf Life from Time of Production	365 Days	Exempt From Shelf Life Labelling	No
---	----------	---	----

ORIGIN

Product Country of Origin/Place of Provenance	United Kingdom
--	----------------

PRODUCT
CHARACTERISTICS

Standards Testing			
Do you undertake trend analysis of microbiological results?	No	Is shelf life testing undertaken?	No

CONFIGURATION

Case Configuration		Inner Pack Configuration	
Total Quantity of Inner Components in Outer Case	4 Units		
Is the Outer Case Splittable?	No		

PRODUCT WEIGHTS

Inner Component	
Variable Weight Consumer Item	No
Inner Component Weight	1.6 kg
Net Drained Weight	1.6 kg
Outer Case	
Outer Case Gross Weight	2.1 kg
Outer Case Net Weight	1.6 kg

PRODUCT DIMENSIONS

Inner Component	
Inner Component Depth	320 mm
Inner Component Width	240 mm
Inner Component Height	280 mm
Outer Case	
Outer Case Depth	320 mm
Outer Case Width	240 mm
Outer Case Height	280 mm

PALLET INFORMATION

Quantity of Cases Per Pallet Layer	15 Cases	Pallet Height	1.29 MTR
Quantity of Layers Per Pallet	4 Layers	Pallet Gross Weight	154 kg
Quantity of Cases Per Pallet	60 Cases		

PACKAGING

Inner Component Packaging						
Type	Materials	Weight	Recycled Plastic %	Recyclable	Returnable	Composite
Bag	Plastic	25 g	0.00 %			
Outer Case Packaging						
Type	Materials	Weight	Recycled Plastic %	Recyclable	Returnable	Composite
Case	Paper/Cardboard	400 g	- %	Yes		

OTHER INFORMATION

Commodity Code	19041030
-----------------------	----------

CONTACT INFORMATION

Address
 Kellanova (previously Kellogg's)
 Kellogg
 Orange Tower
 Salford
 Greater Manchester
 M50 2HF
 England

P. (Phone) 07716254258

Commercial Contact
 Chris Duffy
 National Account Executive
 Chris.Duffy@kellogg.com

The information on the [Erudus System](#) has been supplied by the manufacturers of the products and, whilst the owners of the Erudus System take steps to ensure the information is regularly updated, they give no warranty and no guarantee that the information is accurate. Product information and ingredients may change, please always read product labels carefully in addition to using the information provided by Erudus.

We do not accept liability for any inaccuracies or incorrect information contained on this site.
Please visit <http://www.erudus.com/terms-and-conditions> for full terms and conditions.