

Changed Jan 20, 2025 09:45

Reviewed Jan 20, 2025 09:45

Erudus ID c52b47a75d9a42639bdaac3dccb1080d

Version 2.2

**RECEIVED**  
Thomas Ridley QC Dept.  
12:10, 25 Feb 2025

The food information supplied by Thomas Ridley Foodservice has been provided by the respective product manufacturer. Whilst we use reasonable endeavours to check this information and ensure its accuracy, we do not give any warranty (whether express or implied), guarantee or representation that it is true, accurate or complete in any respect.

As product information, ingredients, nutritional guides and dietary or allergy advice may change from time to time, we recommend that you always carefully read the product label prior to using or consuming any such products. You should not solely rely upon the information we provide and make your own assessment as to the suitability or otherwise of any given product.



15147

# Cooks & Co Artichoke Bottoms (12 x 390g)

Artichoke Bottoms In Brine 12x390g

## PRODUCT DESCRIPTION

Artichoke bottoms in brine

<b>Brand</b>	R.H.Amar & Co Limited
<b>Manufacturer Product Code</b>	CC022
<b>Product Type</b>	Food
<b>Product Category</b>	Vegetables - Canned
<b>Storage Type</b>	Ambient
<b>Erudus ID</b>	c52b47a75d9a42639bdaac3dccb1080d
<b>Specification Type</b>	Fruit and Vegetables



<b>Inner Component GTIN</b>	5060016800150
<b>Outer Case GTIN</b>	05060016820158



## INGREDIENTS

### Ingredient Declaration

Artichoke bottoms (54%), water, salt, acidity regulator: citric acid.

## ALLERGENS

Product Contains:

<b>Celery/Celeriac</b>	No	<b>Mustard</b>	No
<b>Cereals Containing Gluten</b>	No	<b>Nuts (Tree)</b>	No
<b>Barley</b>	No	<b>Almond nuts</b>	No
<b>Oats</b>	No	<b>Brazil nuts</b>	No
<b>Rye</b>	No	<b>Cashew nuts</b>	No
<b>Wheat (including Spelt and Khorasan)</b>	No	<b>Hazelnuts</b>	No
<b>Crustacea</b>	No	<b>Macadamia (Queensland) nuts</b>	No
<b>Eggs</b>	No	<b>Pecan nuts</b>	No
<b>Fish</b>	No	<b>Pistachio nuts</b>	No
<b>Lupin</b>	No	<b>Walnuts</b>	No
<b>Milk</b>	No	<b>Peanuts</b>	No
<b>Molluscs</b>	No	<b>Sesame Seeds</b>	No
		<b>Soybeans</b>	No
		<b>Sulphur Dioxide and Sulphites</b>	No

## SUPPLEMENTARY INGREDIENT INFORMATION

<b>Palm Oil</b>	No
<b>Hydrogenated Vegetable Oil/Fat</b>	No
<b>GM Protein/DNA</b>	No

ADDITIVES

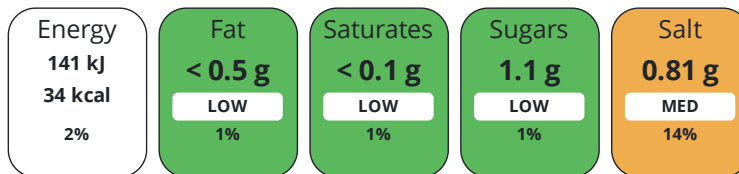
Product Contains:

<b>Artificial Antioxidants</b>	No	<b>Artificial Flavourings</b>	No
<b>Artificial Colours</b>	No	<b>Artificial Preservatives</b>	No
<b>Artificial Flavour Enhancers</b>	No	<b>Artificial Sweeteners</b>	No
<b>Vegan Diet</b>	Certified	<b>Vegetarian Diet</b>	Certified
<b>Halal Diet</b>	Suitable for	<b>Kosher Diet</b>	Suitable for

DIET SUITABILITY

NUTRITIONAL INFORMATION

Each 100g/ml portion contains:



of your reference intake.

Typical values per 100g/ml : Energy 34kcal / 141kJ

Nutrient	per 100g	RI per 100g
<b>Energy (kJ)</b>	141 kJ	2%
<b>Energy (kcal)</b>	34 kcal	2%
<b>Fat</b>	< 0.5 g	1%
<b>of which Saturates</b>	< 0.1 g	1%
<b>Carbohydrate</b>	5.7 g	2%
<b>of which Sugars</b>	1.1 g	1%
<b>Fibre</b>	3 g	
<b>Protein</b>	1.2 g	2%
<b>Salt</b>	0.81 g	14%

SUPPLEMENTARY NUTRITIONAL INFORMATION

HANDLING & STORAGE INFORMATION

**Directions For Use**

Use as required

**Storage Instructions**

Store in a cool, dry place.

**Storage Instructions After Opening**

Once opened, transfer to a non-metallic container, refrigerate and consume within 3 days.

<b>Shelf Life from Time of Production</b>	730 Days
<b>Shelf Life From Opening</b>	3 Days

ACCREDITATIONS/ CERTIFICATIONS/ ASSURANCE SCHEMES ORIGIN

<b>BRCGS Certified</b>	<b>IFS Food Standard</b>
------------------------	--------------------------

**Product Country of Origin/Place of Provenance** Spain

PRODUCT CHARACTERISTICS

Standards Testing			
<b>Do you undertake trend analysis of microbiological results?</b>	No	<b>Is shelf life testing undertaken?</b>	No
Analytical Standards			

	Test	Description	Frequency	Target	Range	Sample (g or ml)	
	pH		Every Batch	=4	3.7 to 4.3	100	
CONFIGURATION	Case Configuration		Inner Pack Configuration				
	<b>Total Quantity of Inner Components in Outer Case</b>	12 Units					
	<b>Is the Outer Case Splittable?</b>	Yes					
PRODUCT WEIGHTS	Inner Component						
	<b>Variable Weight Consumer Item</b>	No					
	<b>Inner Component Weight</b>	390 g					
	<b>Net Drained Weight</b>	210 g					
	Outer Case						
	<b>Outer Case Gross Weight</b>	5.6 kg					
	<b>Outer Case Net Weight</b>	4.68 kg					
PRODUCT DIMENSIONS	Inner Component						
	<b>Inner Component Depth</b>	74 mm					
	<b>Inner Component Width</b>	74 mm					
	<b>Inner Component Height</b>	110 mm					
	Outer Case						
	<b>Outer Case Depth</b>	310 mm					
	<b>Outer Case Width</b>	224 mm					
	<b>Outer Case Height</b>	114 mm					
PALLET INFORMATION	<b>Quantity of Cases Per Pallet Layer</b>	15 Cases	<b>Pallet Height</b>	1.26 MTR			
	<b>Quantity of Layers Per Pallet</b>	11 Layers	<b>Pallet Gross Weight</b>	924 kg			
	<b>Quantity of Cases Per Pallet</b>	165 Cases					
PACKAGING	Inner Component Packaging						
	<b>Type</b>	<b>Materials</b>	<b>Weight</b>	<b>Recycled Plastic %</b>	<b>Recyclable</b>	<b>Returnable</b>	<b>Composite</b>
	Label	Paper/Cardboard	1 g	- %	Yes	No	No
	Can	Steel	60 g	- %	Yes	No	No
	Outer Case Packaging						
	<b>Type</b>	<b>Materials</b>	<b>Weight</b>	<b>Recycled Plastic %</b>	<b>Recyclable</b>	<b>Returnable</b>	<b>Composite</b>
	Shrink Wrap	Plastic	23 g	- %	Yes	No	No
	Case	Paper/Cardboard	58 g	- %	Yes	No	No
OTHER INFORMATION	<b>Intrastat/Taric Code</b>	2005993090					
	<b>Commodity Code</b>	2005993090					
CONTACT INFORMATION	Address						
	R.H.Amar & Co Limited						
	Turnpike Way						
	High Wycombe						
	Bucks						
	HP12 3TF						
	England						
	P: (Phone) +44 (0) 1494 530 200						

The information on the [Erudus System](#) has been supplied by the manufacturers of the products and, whilst the owners of the Erudus System take steps to ensure the information is regularly updated, they give no warranty and no guarantee that the information is accurate. Product information and ingredients may change, please always read product labels carefully in addition to using the information provided by Erudus.

We do not accept liability for any inaccuracies or incorrect information contained on this site.  
Please visit <http://www.erudus.com/terms-and-conditions> for full terms and conditions.