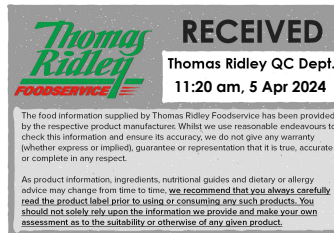


Changed Apr 03, 2024 11:28

Reviewed Apr 03, 2024 11:28

Erudus ID 701e904a3c884596832c5cc686b5fc6b

Version 4.0



Dark Chocolate Truffle Torte 1 x 14 Portion

Dark Chocolate Truffle Torte

PRODUCT DESCRIPTION

A classical chocolate truffle mousse with chocolate sponge, finished with a chocolate mirror.

Brand	Chantilly Patisserie
Manufacturer Product Code	01-14-001-0476
Product Type	Food
Product Category	Desserts
Storage Type	Frozen
Erudus ID	701e904a3c884596832c5cc686b5fc6b
Specification Type	Bakery Products



Outer Case GTIN 5060076940476



INGREDIENTS

Ingredient Declaration

Cream (**MILK**) (32%), Dark Chocolate (20%) (Cocoa Mass, Sugar, Cocoa Butter, Emulsifier (**SOYA** Lecithin), Natural Vanilla Flavouring), Chocolate Sponge (Sugar, Wheat Flour (**WHEAT** Flour, Calcium Carbonate, Iron, Niacin, Thiamin), Whole **EGG**, Rapeseed Oil, Water, Modified Maize Starch, Cocoa Powder, Whey Powder (**MILK**), Raising Agents (Sodium Carbonate, Diphosphates), Natural Vanilla Flavouring, Salt), Chocolate Roulade Sponge (Wheat Flour (**WHEAT** Flour, Calcium Carbonate, Iron, Niacin, Thiamin), **EGG**, Sugar, Glucose-Fructose Syrup, Stabilisers (Glycerol, Sorbitol), Fat Reduced Cocoa Powder, Sunflower Oil, Skimmed **MILK** Powder, Natural Flavouring, Emulsifiers (Mono & Di-glycerides of Fatty Acids, Polyglycerol Esters of Fatty Acids), Salt, Raising Agents (Diphosphates, Sodium Carbonates)), Water, Chocolate Glaze (Glucose Syrup, Sugar, Water, Fat Reduced Cocoa Powder, Gelling Agents (Pectin, Amidated Pectin), Modified Maize Starch, Acid (Citric Acid), Preservative (Potassium Sorbate), Natural Flavouring, Acidity Regulator (Tricalcium Citrate)), White Chocolate (Sugar, Cocoa Butter, Whole **MILK** Powder, Emulsifier (**SOYA** Lecithin), Natural Vanilla Flavouring), Beef Gelatine.

ALLERGENS

Product Contains:

Celery/Celeriac	No
Cereals Containing Gluten	Yes
Barley	May Contain
Oats	May Contain
Rye	No
Wheat (including Spelt and Khorasan)	Yes
Crustacea	No
Eggs	Yes
Fish	No
Lupin	No
Milk	Yes
Molluscs	No

Mustard	No
Nuts (Tree)	May Contain
Almond nuts	May Contain
Brazil nuts	No
Cashew nuts	No
Hazelnuts	May Contain
Macadamia (Queensland) nuts	No
Pecan nuts	May Contain
Pistachio nuts	May Contain
Walnuts	No
Peanuts	No
Sesame Seeds	No
Soybeans	Yes
Sulphur Dioxide and Sulphites	No

Risk Source:

SUPPLEMENTARY
INGREDIENT
INFORMATION

Palm Oil	No
Hydrogenated Vegetable Oil/Fat	No
GM Protein/DNA	No

ADDITIVES

Product Contains:

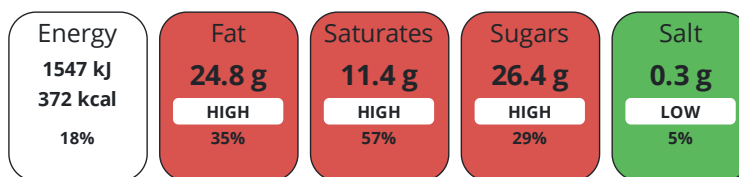
Artificial Antioxidants	No	Artificial Flavourings	No
Artificial Colours	No	Artificial Preservatives	Yes
Artificial Flavour Enhancers	No	Artificial Sweeteners	Yes

DIET
SUITABILITY

Vegan Diet	No	Vegetarian Diet	No
Halal Diet	No	Kosher Diet	No

NUTRITIONAL
INFORMATION

Each 100g/ml portion contains:



of your reference intake.

Typical values per 100g/ml : Energy 372kcal / 1547kJ

Nutrient	per 100g	RI per 100g
Energy (kJ)	1547 kJ	18%
Energy (kcal)	372 kcal	19%
Fat	24.8 g	35%
of which Saturates	11.4 g	57%
of which Mono-unsaturates	9.1 g	
of which Polyunsaturates	2.8 g	
Carbohydrate	32.8 g	13%
of which Sugars	26.4 g	29%
of which Starch	6.4 g	
Fibre	1.4 g	
Protein	4.4 g	9%
Salt	0.3 g	5%
Sodium	100 mg	

VITAMINS AND
MINERALS

Nutrient	per 100g	RI per 100g
Vitamin A	0.2 µg	0%
Vitamin C	0 mg	0%
Folate/Folic Acid	0 µg	0%
Calcium	28 mg	4%
Iron	0.6 mg	4%
Zinc	0.4 mg	4%

SUPPLEMENTARY
NUTRITIONAL
INFORMATION

Cholesterol per 100 g/ml (UK/FR)	0.05 g
Trans Fats per 100 g/ml	0.4 g
Fat Percentage in Dry Matter per 100 g/ml	0 %
Non Milk Extrinsic Sugars per 100 g/ml	23.5 g

HFSS (HIGH IN
FAT, SALT AND
SUGAR)
HANDLING &
STORAGE
INFORMATION

HFSS Status Yes

Directions For Use

To defrost, remove all packaging & refrigerate for 12 hours. Once defrosted, keep refrigerated and use within 4 days. Do not re-freeze.

Storage Instructions

Store at -18°C

Storage Instructions After Opening

Once defrosted, keep refrigerated and use within 4 days.

Shelf Life from Time of Production	730 Days
Shelf Life Once Defrosted	4 Days

Exempt From Shelf Life Labelling No

ACCREDITATIONS/
CERTIFICATIONS/
ASSURANCE
SCHEMES
ORIGIN

BRCGS Certified

Other Accreditation

Product Country of Origin/Place of Provenance United Kingdom

Additional Origin Details

N/A

PRODUCT
CHARACTERISTICS
CONFIGURATION

Standards Testing

Case Configuration

Inner Pack Configuration

Total Quantity of Inner Components in Outer Case 1 Units

Is the Outer Case Splittable? No

PRODUCT
WEIGHTS

Inner Component

Variable Weight Consumer Item Yes

Net Drained Weight 0 g

Outer Case

Outer Case Gross Weight 1.64 kg

Outer Case Net Weight 1.4 kg

PRODUCT
DIMENSIONS

Inner Component

Inner Component Depth 0 mm

Inner Component Width 250 mm

Inner Component Height 50 mm

Outer Case

Outer Case Depth 300 mm

Outer Case Width 295 mm

Outer Case Height 90 mm

PALLET
INFORMATION

Quantity of Cases Per Pallet Layer 12 Cases

Pallet Height 1.5 MTR

Quantity of Layers Per Pallet 15 Layers

Pallet Gross Weight 295.2 kg

Quantity of Cases Per Pallet 180 Cases

PACKAGING

Inner Component Packaging

Type	Materials	Weight	Recycled Plastic %	Recyclable	Returnable	Composite
Box	Paper/Cardboard	70 g	- %			

Outer Case Packaging

Type	Materials	Weight	Recycled Plastic %	Recyclable	Returnable	Composite
Case	Paper/Cardboard	170 g	- %			

Transport Packaging

Type	Materials	Weight	Recycled Plastic %	Recyclable	Returnable	Composite
Other	Plastic	275 g	- %		Yes	
Other	Paper/Cardboard	500 g	- %		Yes	

OTHER INFORMATION

Intrastat/Taric Code 0

Manufacturer Comments

Minimum order quantities are for a single layer of product . Providing that a total minimum of 144 cases to a maximum 180 cases are ordered the pallet can consist of mixed products.

CONTACT INFORMATION

Address

Chantilly Patisserie
Aspen Way Yalberton Industrial Estate
Aspen Way
Paignton
Paignton
TQ4 7QR
England

P: (Phone) 01803 663434

Complaints Contact

Claire Dawson
Technical Director
cdawson@chantillypatisserie.co.uk

P: (Phone) +441803663434

Technical Contact

Claire Dawson
Technical Director
cdawson@chantillypatisserie.co.uk

P: (Phone) +441803663434

Commercial Contact

Andrew Hart
Business Development Manager
ahart@chantillypatisserie.co.uk

P: (Phone) +441803663434

The information on the [Erudus System](#) has been supplied by the manufacturers of the products and, whilst the owners of the Erudus System take steps to ensure the information is regularly updated, they give no warranty and no guarantee that the information is accurate. Product information and ingredients may change, please always read product labels carefully in addition to using the information provided by Erudus.

We do not accept liability for any inaccuracies or incorrect information contained on this site.
Please visit <http://www.erudus.com/terms-and-conditions> for full terms and conditions.