

16033

Lucozade Energy Orange 24 x 380ml

Lucozade Energy Orange 24x

PRODUCT DESCRIPTION

Sparkling Orange Glucose Drink with Sugars and Sweetners

Brand	Suntory Beverage & Food GB&I
Manufacturer Product Code	F40016
Product Type	Drink
Product Category	Juices and Cordials
Storage Type	Ambient
Erudus ID	47b477ead02b4d5683b36964fbbf5768
Specification Type	Legacy



Inner Component GTIN	5054267000162
Outer Case GTIN	05054267400160



INGREDIENTS

Ingredient Declaration

Carbonated Water, Glucose Syrup (11%), Orange Juice from Concentrate (6%), Acid (Citric Acid), Acidity Regulator (Sodium Gluconate), Flavourings, Preservative (Potassium Sorbate), Sweeteners (Sucralose, Acesulfame K), Stabiliser (Acacia Gum), Caffeine, Antioxidant (Ascorbic Acid), Niacin (Vitamin B3), Colour (Beta Carotene).

ALLERGENS

Product Contains:

Celery/Celery	No	Mustard	No
Cereals Containing Gluten	No	Nuts (Tree)	No
Barley	No	Almond nuts	No
Oats	No	Brazil nuts	No
Rye	No	Cashew nuts	No
Wheat (including Spelt and Khorasan)	No	Hazelnuts	No
Gluten content <20ppm	Yes	Macadamia (Queensland) nuts	No
Crustacea	No	Pecan nuts	No
Eggs	No	Pistachio nuts	No
Fish	No	Walnuts	No
Lupin	No	Peanuts	No
Milk	No	Sesame Seeds	No
Molluscs	No	Soybeans	No
Sulphur Dioxide and Sulphites	No		
Palm Oil	Yes		
Hydrogenated Vegetable Oil/Fat	No		
GM Protein/DNA	No		

SUPPLEMENTARY INGREDIENT INFORMATION

RECEIVED

Thomas Ridley QC Dept.
1:34 pm, 27 Mar 2024

The food information supplied by Thomas Ridley Foodservice has been provided by the respective product manufacturer. Whilst we use reasonable endeavours to check this information and ensure its accuracy, we do not give any warranty (whether express or implied), guarantee or representation that it is true, accurate or complete in any respect.

As product information, ingredients, nutritional guides and dietary or allergy advice may change from time to time, we recommend that you always carefully read the product label prior to using or consuming any such products. You should not solely rely upon the information we provide and make your own assessment as to the suitability or otherwise of any given product.



ADDITIVES

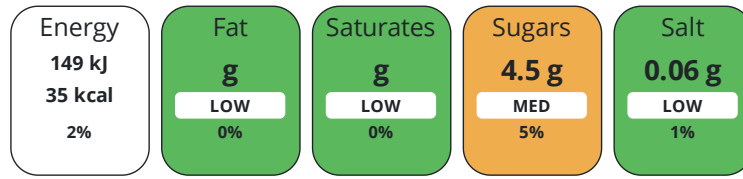
Product Contains:

Artificial Antioxidants	Yes	Artificial Flavourings	Yes
Artificial Colours	No	Artificial Preservatives	Yes
Artificial Flavour Enhancers	No	Artificial Sweeteners	Yes
Suitable for Coeliacs	Yes	Halal Diet	No
Kosher Diet	No	Vegetarian Diet	Suitable for
Vegan Diet	Suitable for		

DIET SUITABILITY

NUTRITIONAL INFORMATION

Each 100g/ml portion contains:



of your reference intake.

Typical values per 100g/ml : Energy 35kcal / 149kj

Nutrient	per 100g/ml	RI per 100g/ml	per 380g/ml serving	RI per 380g/ml serving
Energy (kJ)	149 kJ	2%	566.2 kJ	7%
Energy (kcal)	35 kcal	2%	133 kcal	7%
Fat	0 g	0%	-	-
of which Saturates	0 g	0%	-	-
Carbohydrate	8.4 g	3%	31.9 g	12%
of which Sugars	4.5 g	5%	17.1 g	19%
Protein	0.1 g	0%	0.4 g	1%
Salt	0.06 g	1%	0.2 g	3%
Serving Size	380 g			

SUPPLEMENTARY NUTRITIONAL INFORMATION

HFSS (HIGH IN FAT, SALT AND SUGAR)

HFSS Status No

HANDLING & STORAGE INFORMATION

Directions For Use

380ml Contains 1 Serving

Storage Instructions

Best served Chilled

Shelf Life from Time of Production 180 Days

ACCREDITATIONS/ CERTIFICATIONS/ ASSURANCE SCHEMES ORIGIN

Roundtable of Sustainable Palm Oil (RSPO)

Product Country of Origin/Place of Provenance United Kingdom

Additional Origin Details

As above

PRODUCT CHARACTERISTICS

Standards Testing

CONFIGURATION	Case Configuration	Inner Pack Configuration						
PRODUCT WEIGHTS	Total Quantity of Inner Components in Outer Case	24 Units						
	Is the Outer Case Splittable?	Yes						
	Inner Component							
	Variable Weight Consumer Item	No						
PRODUCT DIMENSIONS	Weight/Volume	380ml						
	Outer Case							
	Outer Case Gross Weight	10.08 kg						
	Outer Case Net Weight	9.41 kg						
	Inner Component							
	Inner Component Depth	60 mm						
	Inner Component Width	60 mm						
	Inner Component Height	202 mm						
	Outer Case							
	Outer Case Depth	360 mm						
Outer Case Width	240 mm							
Outer Case Height	204 mm							
PALLET INFORMATION	Quantity of Cases Per Pallet Layer	13 Cases	Pallet Height	1.6 MTR				
	Quantity of Layers Per Pallet	7 Layers	Pallet Gross Weight	940.73 kg				
	Quantity of Cases Per Pallet	91 Cases						
PACKAGING	Inner Component Packaging							
	Type	Materials	Weight	Recycled Plastic %	Recyclable	Returnable	Composite	
	Bottle	Plastic	24.4 g	- %				
	Outer Case Packaging							
	Type	Materials	Weight	Recycled Plastic %	Recyclable	Returnable	Composite	
	Case	Plastic	30.56 g	- %				
	Case	Paper/Cardboard	1 g	- %				
	OTHER INFORMATION CONTACT INFORMATION	Address						
		Suntory Beverage & Food GB&I						
		2 Longwalk Road,						
Stockley Park								
Uxbridge								
UB11 1BA								
England								
P. (Phone) 07785 432833								

The information on the [Erudus System](#) has been supplied by the manufacturers of the products and, whilst the owners of the Erudus System take steps to ensure the information is regularly updated, they give no warranty and no guarantee that the information is accurate. Product information and ingredients may change, please always read product labels carefully in addition to using the information provided by Erudus.

We do not accept liability for any inaccuracies or incorrect information contained on this site.
Please visit <http://www.erudus.com/terms-and-conditions> for full terms and conditions.