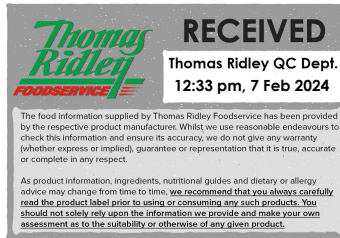


Changed Feb 07, 2024 11:18

Reviewed Feb 07, 2024 11:18

Erudus ID aa15ae9bf5dd4a37b32df26b05d44ef4

Version 2.0



**Thomas Ridley**  
FOODSERVICE

**RECEIVED**  
Thomas Ridley QC Dept.  
12:33 pm, 7 Feb 2024

The food information supplied by Thomas Ridley Foodservice has been provided by the respective product manufacturers. Whilst we use reasonable endeavours to check this information and ensure its accuracy, we do not give any warranty (whether express or implied), guarantee or representation that it is true, accurate or complete in any respect.

As product information, ingredients, nutritional guides and dietary or allergy advice may change from time to time, we recommend that you always carefully read the product label prior to using or consuming any such products. You should not solely rely upon the information we provide and make your own assessment as to the suitability or otherwise of any given product.



# TOFFEE CAKE (1 x 14 ptn)

Toffee Cake 1x1650g

## PRODUCT DESCRIPTION

A moist toffee sponge filled with a layer of toffee sauce and filled and topped with toffee icing. The cake is finished with a toffee sauce drizzle and a sprinkling of toffee pieces.

Brand	The Handmade Cake Co.
Manufacturer Product Code	070914
Product Type	Food
Product Category	Cakes and Tarts
Storage Type	Frozen
Erudus ID	aa15ae9bf5dd4a37b32df26b05d44ef4
Specification Type	Bakery Products



Outer Case GTIN 5060044070914



## INGREDIENTS

### Ingredient Declaration

**WHEAT** Flour (with Calcium Carbonate, Niacin, Iron, Thiamin), Soft Dark Brown Sugar [Sugar, Cane Molasses], Toffee Sauce (15%) [Glucose Syrup, Invert Sugar Syrup, Sweetened Condensed Skimmed **MILK**, Sugar, Butter Oil (**MILK**), Water, Colour (Caramel), Stabiliser (Pectin), Natural Flavouring], Sugar, Water, Pasteurised Free Range **EGG**, Salted Butter [Butter (**MILK**), Salt], Vegetable Margarine [Palm Oil, Rapeseed Oil, Water, Salt, Emulsifier (E471), Natural Flavouring], Skimmed **MILK** Powder, Baking Powder [Raising Agents (E575, E500(ii), E336(i)), Maize Starch], Toffee Pieces (0.8%) [Sugar, Glucose Syrup, Sweetened Condensed Milk (Whole **MILK**, Sugar), Palm Oil, Butter Oil (**MILK**), Natural Flavouring, Coconut Oil, Glazing Agent (Carnauba Wax)], Toffee Flavouring (0.3%).

## ALLERGENS

Product Contains:

<b>Celery/Celериac</b>	No	<b>Mustard</b>	No
<b>Cereals Containing Gluten</b>	Yes	<b>Nuts (Tree)</b>	May Contain
<b>Barley</b>	No	<b>Almond nuts</b>	May Contain
<b>Oats</b>	No	<b>Brazil nuts</b>	May Contain
<b>Rye</b>	No	<b>Cashew nuts</b>	May Contain
<b>Wheat (including Spelt and Khorasan)</b>	Yes	<b>Hazelnuts</b>	May Contain
<b>Crustacea</b>	No	<b>Macadamia (Queensland) nuts</b>	May Contain
<b>Eggs</b>	Yes	<b>Pecan nuts</b>	May Contain
<b>Fish</b>	No	<b>Pistachio nuts</b>	May Contain
<b>Lupin</b>	No	<b>Walnuts</b>	May Contain
<b>Milk</b>	Yes	<b>Peanuts</b>	No
<b>Molluscs</b>	No	<b>Sesame Seeds</b>	No
		<b>Soybeans</b>	No
		<b>Sulphur Dioxide and Sulphites</b>	No

Risk Source:

<b>Tree Nuts (Risk Source)</b>	Raw Material	<b>Almond nuts (Risk Source)</b>	Factory
<b>Brazil nuts (Risk Source)</b>	Raw Material	<b>Cashew nuts (Risk Source)</b>	Raw Material
<b>Hazelnuts (Risk Source)</b>	Factory	<b>Macadamia nuts (Risk Source)</b>	Raw Material
<b>Pecan nuts (Risk Source)</b>	Factory	<b>Pistachio nuts (Risk Source)</b>	Factory
<b>Walnuts (Risk Source)</b>	Factory		

**Additional Allergen Information**

For allergens, including cereals containing gluten, see ingredients in BOLD. This product may contain traces of nuts as it has been made in a bakery that uses nut ingredients.

SUPPLEMENTARY  
INGREDIENT  
INFORMATION

<b>Palm Oil</b>	Yes
<b>Hydrogenated Vegetable Oil/Fat</b>	No
<b>GM Protein/DNA</b>	No

ADDITIVES

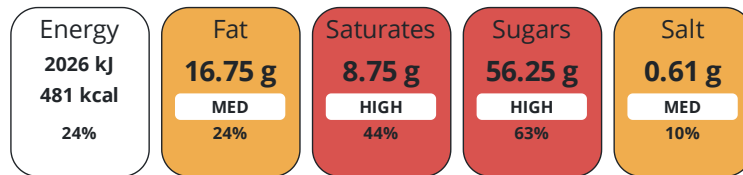
Product Contains:

<b>Artificial Antioxidants</b>	No	<b>Artificial Flavourings</b>	No
<b>Artificial Colours</b>	No	<b>Artificial Preservatives</b>	No
<b>Artificial Flavour Enhancers</b>	No	<b>Artificial Sweeteners</b>	No
<b>Vegan Diet</b>	No	<b>Vegetarian Diet</b>	Suitable for
<b>Halal Diet</b>	No	<b>Kosher Diet</b>	No

DIET  
SUITABILITY

NUTRITIONAL  
INFORMATION

Each 125g/ml serving contains:



of your reference intake.

Typical values per 125g/ml : Energy 481kcal / 2026kJ

Nutrient	per 100g	RI per 100g	per 125g serving	RI per 125g serving
<b>Energy (kJ)</b>	1621 kJ	19%	2026.3 kJ	24%
<b>Energy (kcal)</b>	385 kcal	19%	481.3 kcal	24%
<b>Fat</b>	13.4 g	19%	16.8 g	24%
<b>of which Saturates</b>	7 g	35%	8.8 g	44%
<b>Carbohydrate</b>	62.1 g	24%	77.6 g	30%
<b>of which Sugars</b>	45 g	50%	56.3 g	63%
<b>Fibre</b>	0.9 g		1.1 g	
<b>Protein</b>	3.5 g	7%	4.4 g	9%
<b>Salt</b>	0.49 g	8%	0.6 g	10%
<b>Serving Size</b>	125 g			
<b>Serving Size Description</b>	One slice of cake			
<b>Number of Servings</b>	14 Servings			

**Source of Nutritional Information** Calculation from known/accepted datasets

SUPPLEMENTARY  
NUTRITIONAL  
INFORMATION

HFSS (HIGH IN FAT, SALT AND SUGAR)  
HANDLING & STORAGE INFORMATION

**HFSS Status** Yes

**Directions For Use**

Remove wrapping before defrosting. Defrost at room temperature for 4 hours. Serve at room temperature. Once defrosted store in a cool dry place. Do not refreeze once defrosted. Consume within 5 days.

**Storage Instructions**

Keep frozen, store at -18°C or below.

**Shelf Life from Time of Production** 365 Days

**Exempt From Shelf Life Labelling** No

ACCREDITATIONS/  
CERTIFICATIONS/  
ASSURANCE  
SCHEMES



**Other Accreditation**

N/A

ORIGIN

**Product Country of Origin/Place of** United Kingdom

**Provenance**

PRODUCT CHARACTERISTICS

Standards Testing

**Do you undertake trend analysis of microbiological results?** Yes

**Is shelf life testing undertaken?** Yes

**Commercially Sterile** No

Microbiological Standards

Organism	Description	Frequency	Target	Maximum	Sample (g or ml)
Enterobacteriaceae (cfu/g or ml)		Annually	<10	100	1
Staphylococcus Aureus (cfu/g or ml)		Annually	<200	10000	1
Salmonella (cfu/g or ml)	Detected/Not detected in 25g	Annually	=0	1	25
Yeast (cfu/g or ml)		Annually	<100	10000	1
Moulds (cfu/g or ml)		Annually	<100	10000	1

CONFIGURATION

Case Configuration

Inner Pack Configuration

**Total Quantity of Inner Components in** 1 Units

**Outer Case**

**Is the Outer Case Splittable?** No

PRODUCT WEIGHTS

Inner Component

**Variable Weight Consumer Item** No

**Inner Component Weight** 1650 g

Outer Case

**Outer Case Gross Weight** 1.84 kg

**Outer Case Net Weight** 1.65 kg

PRODUCT DIMENSIONS

Inner Component	
<b>Inner Component Depth</b>	256 mm
<b>Inner Component Width</b>	256 mm
<b>Inner Component Height</b>	70 mm
Outer Case	
<b>Outer Case Depth</b>	259 mm
<b>Outer Case Width</b>	259 mm
<b>Outer Case Height</b>	96 mm

PALLET INFORMATION

<b>Quantity of Cases Per Pallet Layer</b>	12 Cases	<b>Pallet Height</b>	1.3 MTR
<b>Quantity of Layers Per Pallet</b>	12 Layers	<b>Pallet Gross Weight</b>	290.6 kg
<b>Quantity of Cases Per Pallet</b>	144 Cases		

PACKAGING

Inner Component Packaging						
Type	Materials	Weight	Recycled Plastic %	Recyclable	Returnable	Composite
Film	Plastic	3 g	- %			
Film	Paper/Cardboard	59 g	- %			
Outer Case Packaging						
Type	Materials	Weight	Recycled Plastic %	Recyclable	Returnable	Composite
Case	Paper/Cardboard	125 g	- %			
Transport Packaging						
Type	Materials	Weight	Recycled Plastic %	Recyclable	Returnable	Composite
Other	Plastic	2.08 g	- %			
Other	Paper/Cardboard	2.08 g	- %			
Other	Wood	173.61 g	- %			

OTHER INFORMATION

<b>Intrastat/Taric Code</b>	19059070
<b>Commodity Code</b>	1905907000

**Manufacturer Comments**

Transit packaging is given per case based on a full pallet load.

CONTACT INFORMATION

Address	Technical Contact
The Handmade Cake Co.	Technical Team
The Bakery	Maidenhead.Technical@mdesserts.com
Gardner Road	
Maidenhead	P: (Phone) 01628 770908 Ext. 1052
Berkshire	
SL6 7TU	
United Kingdom	
P: (Phone) 01628 770908	
Complaints Contact	
Technical Team	
Maidenhead.Technical@mdesserts.com	
P: (Phone) 01628 770908 Ext. 1052	

The information on the [Erudus System](#) has been supplied by the manufacturers of the products and, whilst the owners of the Erudus System take steps to ensure the information is regularly updated, they give no warranty and no guarantee that the information is accurate. Product information and ingredients may change, please always read product labels carefully in addition to using the information provided by Erudus.

We do not accept liability for any inaccuracies or incorrect information contained on this site.  
Please visit <http://www.erudus.com/terms-and-conditions> for full terms and conditions.