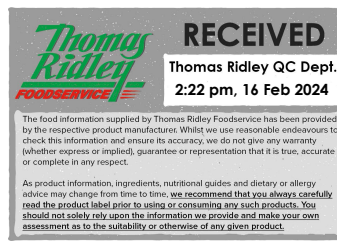


Changed Feb 16, 2024 10:46

Reviewed Feb 16, 2024 10:46

Erudus ID 1b7c4e81d6c34d2283de3664f98df0a1

Version 3.0



Raspberry & Clotted Cream Charlotte

Raspberry & Clotted Cream Charlotte

PRODUCT DESCRIPTION

A fine sugared roulade, compote of raspberries with clotted cream and white chocolate truffle.

Brand	Chantilly Patisserie
Manufacturer Product Code	01-14-001-2289
Product Type	Food
Product Category	Desserts
Storage Type	Frozen
Erudus ID	1b7c4e81d6c34d2283de3664f98df0a1
Specification Type	Bakery Products
Inner Component GTIN	5060076942289
Outer Case GTIN	5060076942289



INGREDIENTS

Ingredient Declaration

Cream (**MILK**), Vanilla Sponge (Wheat Flour (**WHEAT** Flour, Calcium Carbonate, Iron, Niacin, Thiamin), Sugar, Whole **EGG**, Rapeseed Oil, Water, Modified Maize Starch, Whey Powder (**MILK**), Raising Agents (Potassium Carbonate, Diphosphates), Emulsifiers (Lactic Acid Esters of Mono & Di-glycerides of Fatty Acids, Mono & Di-glycerides of Fatty Acids, Propane-1,2-diol Esters of Fatty Acids), Skimmed **MILK** Powder, Stabiliser (Diphosphates), Salt, Flavouring), Raspberry Filling (12%) (Raspberries, Water, Sugar, Modified Maize Starch), White Chocolate (8%) (Sugar, Cocoa Butter, Whole **MILK** Powder, Emulsifier (**SOYA** Lecithin), Natural Vanilla), Strawberry Glaze (Water, Glucose-Fructose Syrup, Sugar, Strawberry Puree, Gelling Agents (Pectin, Carrageenan, Xanthan Gum), Acidifying Agent (Citric Acid), Plant Extracts (Elderberry, Paprika, Turmeric), Acidity Regulators (Sodium Citrate, Calcium Phosphates), Concentrated Elder Juice, Flavour, Preservative (Potassium Sorbate)), Water, Raspberries (7%), Vanilla Roulade Sponge (Water, **EGG**, Wheat Flour (**WHEAT** Flour, Calcium Carbonate, Iron, Niacin, Thiamin), Sugar, Potato Starch, Dextrose, **EGG** White Powder, Modified Potato Starch, Whole **EGG**, Raising Agents (Diphosphates, Sodium Carbonates), Gelling Agents (Sodium Alginate, Ethyl Methyl Cellulose), Salt, Emulsifier (Lactic Acid Esters of Mono & Di-glycerides of Fatty Acids), **WHEAT** Starch, Dextrose, Sugar, **MILK** Proteins, Pea Flour, Rice Flour, Sorbitol, Preservative (Calcium Propionate)), Sugar, Clotted Cream (**MILK**) (2%), Dried Glucose Syrup, Beef Gelatine, Modified Potato Starch, **EGG** Yolk Powder, Dried **EGG** White, Acidity Regulator (Diphosphates, Citric Acid), Salt, Stabilisers (Carboxy Methyl Cellulose, Guar Gum).

ALLERGENS

Product Contains:

Celery/Celeriac	No
Cereals Containing Gluten	Yes
Barley	May Contain
Oats	May Contain
Rye	No
Wheat (including Spelt and Khorasan)	Yes
Crustacea	No
Eggs	Yes
Fish	No
Lupin	No
Milk	Yes
Molluscs	No

Mustard	No
Nuts (Tree)	May Contain
Almond nuts	May Contain
Brazil nuts	No
Cashew nuts	No
Hazelnuts	May Contain
Macadamia (Queensland) nuts	No
Pecan nuts	May Contain
Pistachio nuts	May Contain
Walnuts	No
Peanuts	No
Sesame Seeds	No
Soybeans	Yes
Sulphur Dioxide and Sulphites	No

Risk Source:

SUPPLEMENTARY
INGREDIENT
INFORMATION

Palm Oil	Yes
Hydrogenated Vegetable Oil/Fat	No
GM Protein/DNA	No

ADDITIVES

Product Contains:

Artificial Antioxidants	No
Artificial Colours	No
Artificial Flavour Enhancers	No

Artificial Flavourings	No
Artificial Preservatives	Yes
Artificial Sweeteners	No

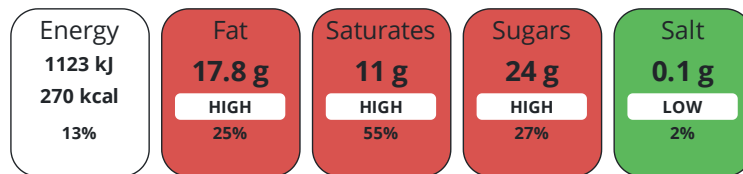
DIET
SUITABILITY

Vegan Diet	No
Halal Diet	No

Vegetarian Diet	No
Kosher Diet	No

NUTRITIONAL
INFORMATION

Each 100g/ml portion contains:



of your reference intake.

Typical values per 100g/ml : Energy 270kcal / 1123kj

Nutrient	per 100g	RI per 100g
Energy (kJ)	1123 kJ	13%
Energy (kcal)	270 kcal	14%
Fat	17.8 g	25%
of which Saturates	11 g	55%
of which Mono-unsaturates	5.2 g	
of which Polyunsaturates	0.5 g	
Carbohydrate	25.2 g	10%
of which Sugars	24 g	27%
of which Starch	1.1 g	
Fibre	0.9 g	
Protein	2.1 g	4%
Salt	0.1 g	2%
Sodium	0 mg	

VITAMINS AND MINERALS

Nutrient	per 100g	RI per 100g
Vitamin A	0.25 µg	0%
Vitamin C	2 mg	3%
Folate/Folic Acid	0 µg	0%
Calcium	52 mg	7%
Iron	0.1 mg	1%
Zinc	0.2 mg	2%

SUPPLEMENTARY NUTRITIONAL INFORMATION

Cholesterol per 100 g/ml (UK/FR)	0.04 g
Trans Fats per 100 g/ml	0.5 g
Fat Percentage in Dry Matter per 100 g/ml	0 %
Non Milk Extrinsic Sugars per 100 g/ml	18.3 g

HFSS (HIGH IN FAT, SALT AND SUGAR) HANDLING & STORAGE INFORMATION

HFSS Status	Yes
-------------	-----

Directions For Use

To defrost, remove all packaging & refrigerate for 12 hours. Once defrosted, keep refrigerated and use within 4 days. Do not re-freeze.

Storage Instructions

Store at -18°C.

Shelf Life from Time of Production	730 Days	Exempt From Shelf Life Labelling	No
------------------------------------	----------	----------------------------------	----

ACCREDITATIONS/ CERTIFICATIONS/ ASSURANCE SCHEMES



Other Accreditation

None

ORIGIN	Product Country of Origin/Place of Provenance	United Kingdom					
	Additional Origin Details	N/A					
PRODUCT CHARACTERISTICS	Standards Testing						
	Do you undertake trend analysis of microbiological results?	No	Is shelf life testing undertaken?		No		
	Microbiological Standards						
	Organism	Description	Frequency	Target	Maximum	Sample (g or ml)	
	E. Coli (cfu/g or ml)		Occasionally	<10	100	10	
	Enterobacteriaceae (cfu/g or ml)		Occasionally	<10	10000	10	
	Listeria Monocytogenes (cfu/g or ml)	Absent in 25g	Occasionally	<0	0	25	
	Staphylococcus Aureus (cfu/g or ml)		Occasionally	<20	100	10	
CONFIGURATION	Total Viable Count (TVC) (cfu/g or ml)		Occasionally	<1000	1000000	10	
	Salmonella (cfu/g or ml)	Absent in 25g	Occasionally	<0	0	25	
	Case Configuration	Inner Pack Configuration					
	Total Quantity of Inner Components in Outer Case	1 Units					
	Is the Outer Case Splittable?	No					
	PRODUCT WEIGHTS	Inner Component					
		Variable Weight Consumer Item	Yes				
		Net Drained Weight	0 g				
Outer Case							
Outer Case Gross Weight		1.66 kg					
Outer Case Net Weight		1.4 kg					
PRODUCT DIMENSIONS	Inner Component						
	Inner Component Depth	250 mm					
	Inner Component Width	250 mm					
	Inner Component Height	60 mm					
	Outer Case						
	Outer Case Depth	300 mm					
	Outer Case Width	295 mm					
	Outer Case Height	90 mm					
PALLET INFORMATION	Quantity of Cases Per Pallet Layer	12 Cases	Pallet Height		1.5 MTR		
	Quantity of Layers Per Pallet	15 Layers	Pallet Gross Weight		299 kg		
	Quantity of Cases Per Pallet	180 Cases					
PACKAGING	Inner Component Packaging						
	Type	Materials	Weight	Recycled Plastic %	Recyclable	Returnable	Composite
	Box	Paper/Cardboard	85 g	- %			

Outer Case Packaging

Type	Materials	Weight	Recycled Plastic %	Recyclable	Returnable	Composite
Case	Paper/Cardboard	175 g	- %			

Transport Packaging

Type	Materials	Weight	Recycled Plastic %	Recyclable	Returnable	Composite
Other	Plastic	275 g	- %		Yes	
Other	Paper/Cardboard	500 g	- %		Yes	

OTHER INFORMATION

Intrastat/Taric Code	0
-----------------------------	---

Manufacturer Comments

Minimum order quantities are for a single layer of product . Providing that a total minimum of 144 cases to a maximum 180 cases are ordered the pallet can consist of mixed products.

CONTACT INFORMATION

Address	Technical Contact
Chantilly Patisserie	Claire Dawson
Aspen Way Yalberton Industrial Estate	Technical Director
Aspen Way	cdawson@chantillypatisserie.co.uk
Paignton	
Paignton	<u>P: (Phone)</u> +441803663434
TQ4 7QR	
England	

P: (Phone) 01803 663434

Complaints Contact	Commercial Contact
Claire Dawson	Andrew Hart
Technical Director	Business Development Manager
cdawson@chantillypatisserie.co.uk	ahart@chantillypatisserie.co.uk
<u>P: (Phone)</u> +441803663434	<u>P: (Phone)</u> +441803663434

The information on the [Erudus System](#) has been supplied by the manufacturers of the products and, whilst the owners of the Erudus System take steps to ensure the information is regularly updated, they give no warranty and no guarantee that the information is accurate. Product information and ingredients may change, please always read product labels carefully in addition to using the information provided by Erudus.

We do not accept liability for any inaccuracies or incorrect information contained on this site. Please visit <http://www.erudus.com/terms-and-conditions> for full terms and conditions.