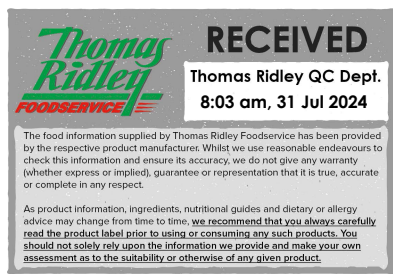


Changed Jul 29, 2024 13:31

Reviewed Jul 29, 2024 13:31

Erudus ID 511566d883504289b8f643d6bb276451

Version 2.0



18036

GLUTEN FREE SYRUP SPONGE PUDDING

Gluten Free Syrup Sponge Pudding 12x150g

PRODUCT DESCRIPTION

Individual portions of gluten free sponge pudding with a light syrup sauce topping. Packed 1 x 12 puddings per outer case.

Brand	CDT Sidoli (Welshpool) Ltd
Manufacturer Product Code	55407
Product Type	Food
Product Category	Desserts
Storage Type	Frozen
Erudus ID	511566d883504289b8f643d6bb276451
Specification Type	Generic



Outer Case GTIN 5015091554078



INGREDIENTS

Ingredient Declaration

Golden syrup, gluten free flour blend (flours (rice, potato, tapioca, maize, buckwheat), raising agents (mono-calcium phosphate, sodium bicarbonate), thickener (xanthan gum)), water, rapeseed oil, sugar, EGG, glucose syrup, raising agents (monocalcium phosphate, potassium hydrogen carbonate), modified maize starch, colours (curcumin, annatto norbixin).

ALLERGENS

Product Contains:

Celery/Celery	No	Mustard	No
Cereals Containing Gluten	No	Nuts (Tree)	May Contain
Barley	No	Almond nuts	May Contain
Oats	No	Brazil nuts	No
Rye	No	Cashew nuts	No
Wheat (including Spelt and Khorasan)	No	Hazelnuts	May Contain
Crustacea	No	Macadamia (Queensland) nuts	No
Eggs	Yes	Pecan nuts	May Contain
Fish	No	Pistachio nuts	May Contain
Lupin	No	Walnuts	May Contain
Milk	May Contain	Peanuts	No
Molluscs	No	Sesame Seeds	No
		Soybeans	No
		Sulphur Dioxide and Sulphites	No

Risk Source:

Milk (Risk Source)	Factory
Almond nuts (Risk Source)	Factory
Pecan nuts (Risk Source)	Factory
Walnuts (Risk Source)	Factory

Tree Nuts (Risk Source)	Factory
Hazelnuts (Risk Source)	Factory
Pistachio nuts (Risk Source)	Factory

Additional Allergen Information

MADE IN A FACTORY THAT ALSO HANDLES THE FOLLOWING ALLERGENS: MILK & NUTS.

SUPPLEMENTARY
INGREDIENT
INFORMATION

Palm Oil	No
Hydrogenated Vegetable Oil/Fat	No
GM Protein/DNA	No

ADDITIVES

Product Contains:

Artificial Antioxidants	No
Artificial Colours	No
Artificial Flavour Enhancers	No

Artificial Flavourings	No
Artificial Preservatives	No
Artificial Sweeteners	No

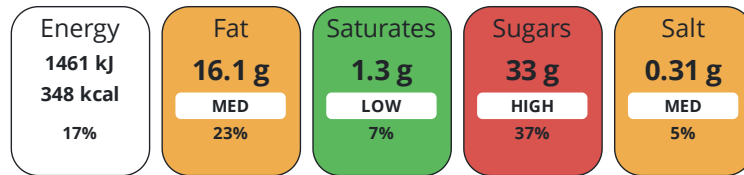
DIET
SUITABILITY

Vegan Diet	No
Halal Diet	No

Vegetarian Diet	Suitable for
Kosher Diet	No

NUTRITIONAL
INFORMATION

Each 100g/ml portion contains:



of your reference intake.

Typical values per 100g/ml : Energy 348kcal / 1461kJ

Nutrient	per 100g	RI per 100g	per 150g serving	RI per 150g serving
Energy (kJ)	1461 kJ	17%	2191.5 kJ	26%
Energy (kcal)	348 kcal	17%	522 kcal	26%
Fat	16.1 g	23%	24.2 g	35%
of which Saturates	1.3 g	7%	2 g	10%
Carbohydrate	49 g	19%	73.5 g	28%
of which Sugars	33 g	37%	49.5 g	55%
Fibre	0.1 g		0.2 g	
Protein	2.1 g	4%	3.2 g	6%
Salt	0.31 g	5%	0.5 g	8%

Serving Size 150 g

SUPPLEMENTARY
NUTRITIONAL
INFORMATION

HFSS (HIGH IN
FAT, SALT AND
SUGAR)

HFSS Status	Yes
HFSS Score	13

HANDLING &
STORAGE
INFORMATION

Directions For Use

Handling Instructions Re-heat prior to serving. Reheating Instructions Place container on a plate. Microwave from frozen on full power for approximately 65 seconds (800 watt microwave). Allow to stand for approximately 5 seconds before removing flowrap. Invert pudding on a plate, squeezing outside of the container to ease removal of pudding. Remove any excess sauce from the container using a spoon if required.

Storage Instructions

At or below minus 18°C (0°F)

Shelf Life from Time of Production 730 Days

ACCREDITATIONS/
CERTIFICATIONS/
ASSURANCE
SCHEMES
ORIGIN

BRCGS Certified

Other Accreditation

Product Country of Origin/Place of United Kingdom

Provenance

Additional Origin Details

N/a

PRODUCT
CHARACTERISTICS

Standards Testing

Do you undertake trend analysis of microbiological results? Yes **Is shelf life testing undertaken?** No

Microbiological Standards

Organism	Description	Frequency	Target	Maximum	Sample (g or ml)
Enterobacteriaceae (cfu/g or ml)	37 C for 24 hours	Occasionally	<10	10	100
E. Coli (cfu/g or ml)	44 C for 24 hours	Occasionally	<10	10	100
Total Viable Count (TVC) (cfu/g or ml)	30 C for 48 hours	Occasionally	<100.000	100.000	100
Staphylococcus Aureus (cfu/g or ml)	37 C for 48 Hours	Occasionally	<20	20	100

CONFIGURATION

Case Configuration

Inner Pack Configuration

Total Quantity of Inner Components in 12 Units

Outer Case

Is the Outer Case Splittable? No

PRODUCT
WEIGHTS

Inner Component

Variable Weight Consumer Item No

Inner Component Weight 150 g

Outer Case

Outer Case Gross Weight 2.6 kg

Outer Case Net Weight 1.8 kg

PRODUCT
DIMENSIONS

Inner Component

Inner Component Depth 107 mm

Inner Component Width 107 mm

Inner Component Height 60 mm

Outer Case

Outer Case Depth 329 mm

Outer Case Width 221 mm

Outer Case Height 140 mm

PALLET INFORMATION

Quantity of Cases Per Pallet Layer	15 Cases	Pallet Height	1.56 MTR
Quantity of Layers Per Pallet	10 Layers	Pallet Gross Weight	418 kg
Quantity of Cases Per Pallet	150 Cases		

PACKAGING

Inner Component Packaging

Type	Materials	Weight	Recycled Plastic %	Recyclable	Returnable	Composite
Poly Treated PET/PE	Plastic	10.6 g	60 %	Yes	No	
Layer Card	Paper/Cardboard / Paperboard	15 g	- %	Yes	No	
Bag	Plastic / OPP (Oriented Polypropylene)	2.5 g	0 %	No	No	

Outer Case Packaging

Type	Materials	Weight	Recycled Plastic %	Recyclable	Returnable	Composite
Case	Paper/Cardboard / Corrugated	136.7 g	- %	Yes	No	

OTHER INFORMATION

Intrastat/Taric Code 19059070

Manufacturer Comments

Gluten Free Product

CONTACT INFORMATION

Address

CDT Sidoli (Welshpool) Ltd
Henfaes Lane
Welshpool
Powys
SY21 7BE
Wales

P: (Phone) 01938 555234

Complaints Contact

Hera Gottschalk
Customers Service
customer_service@sidoli.co.uk

P: (Phone) 01935 555234

Technical Contact

Michele Fischetti
Technical Manager
mfischetti@sidoli.co.uk

P: (Phone) 01938 555234

Commercial Contact

Lorna Gries
Sales Manager
lgries@sidoli.co.uk

P: (Phone) 01938 555234

The information on the [Erudus System](#) has been supplied by the manufacturers of the products and, whilst the owners of the Erudus System take steps to ensure the information is regularly updated, they give no warranty and no guarantee that the information is accurate. Product information and ingredients may change, please always read product labels carefully in addition to using the information provided by Erudus.

We do not accept liability for any inaccuracies or incorrect information contained on this site.
Please visit <http://www.erudus.com/terms-and-conditions> for full terms and conditions.