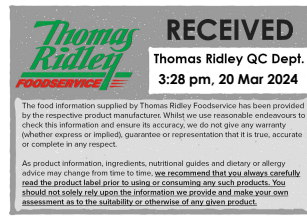


Changed Mar 18, 2024 15:20

Reviewed Mar 18, 2024 15:20

Erudus ID c5aa784107774ab68b4cf6bb5cc68772

Version 4.0



19127

# Jus-Rol Puff Pastry Block 4 x 1.5kg

Puff Pastry 4x1.5kg

## PRODUCT DESCRIPTION

Frozen uncooked puff pastry blocks

Brand	PA Ross Ltd
Manufacturer Product Code	I000235
Product Type	Food
Product Category	Pastry
Storage Type	Frozen
Erudus ID	c5aa784107774ab68b4cf6bb5cc68772
Specification Type	Generic
Inner Component GTIN	5010084109761
Outer Case GTIN	5010084109778



## INGREDIENTS

### Ingredient Declaration

WHEAT flour, water, vegetable oils and fats (palm, rapeseed), salt, emulsifier (mono- and diglycerides of fatty acids), flour treatment agent (ascorbic acid).

## ALLERGENS

Product Contains:

Celery/Celeriac	No	Mustard	No
Cereals Containing Gluten	Yes	Nuts (Tree)	No
Barley	No	Almond nuts	No
Oats	No	Brazil nuts	No
Rye	No	Cashew nuts	No
Wheat (including Spelt and Khorasan)	Yes	Hazelnuts	No
Crustacea	No	Macadamia (Queensland) nuts	No
Eggs	No	Pecan nuts	No
Fish	No	Pistachio nuts	No
Lupin	No	Walnuts	No
Milk	No	Peanuts	No
Molluscs	No	Sesame Seeds	No
		Soybeans	No
		Sulphur Dioxide and Sulphites	No

### Additional Allergen Information

For allergens, see ingredients in bold.

## SUPPLEMENTARY INGREDIENT INFORMATION

Palm Oil	Yes
Hydrogenated Vegetable Oil/Fat	No
GM Protein/DNA	No

ADDITIVES

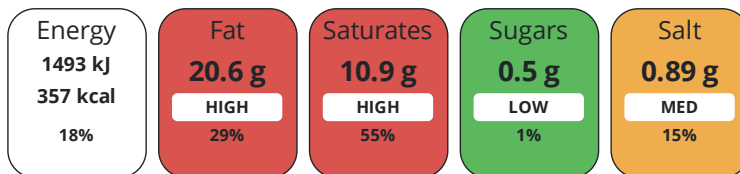
Product Contains:

<b>Artificial Antioxidants</b>	No	<b>Artificial Flavourings</b>	No
<b>Artificial Colours</b>	No	<b>Artificial Preservatives</b>	No
<b>Artificial Flavour Enhancers</b>	No	<b>Artificial Sweeteners</b>	No
<b>Vegan Diet</b>	Suitable for	<b>Vegetarian Diet</b>	Suitable for
<b>Halal Diet</b>	No	<b>Kosher Diet</b>	No

DIET  
SUITABILITY

NUTRITIONAL  
INFORMATION

Each 100g/ml portion contains:



of your reference intake.

Typical values per 100g/ml : Energy 357kcal / 1493kJ

Nutrient	per 100g	RI per 100g	per 50g serving	RI per 50g serving
<b>Energy (kJ)</b>	1493 kJ	18%	746.5 kJ	9%
<b>Energy (kcal)</b>	357 kcal	18%	178.5 kcal	9%
<b>Fat</b>	20.6 g	29%	10.3 g	15%
<b>of which Saturates</b>	10.9 g	55%	5.5 g	28%
<b>Carbohydrate</b>	37.2 g	14%	18.6 g	7%
<b>of which Sugars</b>	0.5 g	1%	0.3 g	0%
<b>Fibre</b>	1.2 g		0.6 g	
<b>Protein</b>	5.1 g	10%	2.6 g	5%
<b>Salt</b>	0.89 g	15%	0.4 g	7%

**Serving Size** 50 g

SUPPLEMENTARY  
NUTRITIONAL  
INFORMATION

HANDLING &  
STORAGE  
INFORMATION

**Directions For Use**

Ensure that the pastry is thoroughly defrosted before use. 1. Thaw at room temperature for approximately 2 hours. Alternatively thaw overnight in a refrigerator and stand at room temperature for 15 – 20 minutes before use. 2. Lightly flour both the work surface and pastry before rolling to required thickness. Allow to stand for 5 minutes to help reduce shrinkage. 3. Bake in a preheated oven at 220°C/425°F/Gas 7, or at the temperature required by your recipe.

**Storage Instructions**

KEEP FROZEN AT -18°C. DO NOT REFREEZE ONCE DEFROSTED. ONCE DEFROSTED USE WITHIN 24 HOURS.

**Shelf Life from Time of Production** 558 Days **Exempt From Shelf Life Labelling** No

ACCREDITATIONS/  
CERTIFICATIONS/  
ASSURANCE  
SCHEMES  
ORIGIN

**Roundtable of Sustainable Palm Oil (RSPO)** **Other Accreditation**

**Product Country of Origin/Place of** Great Britain

**Provenance**

PRODUCT  
CHARACTERISTICS

Standards Testing



The information on the [Erudus System](#) has been supplied by the manufacturers of the products and, whilst the owners of the Erudus System take steps to ensure the information is regularly updated, they give no warranty and no guarantee that the information is accurate. Product information and ingredients may change, please always read product labels carefully in addition to using the information provided by Erudus.

We do not accept liability for any inaccuracies or incorrect information contained on this site.  
Please visit <http://www.erudus.com/terms-and-conditions> for full terms and conditions.