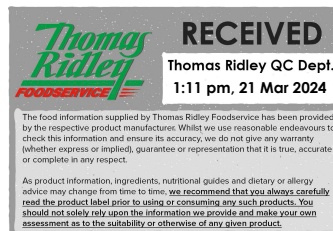


Changed Mar 21, 2024 12:10

Reviewed Mar 21, 2024 12:10

Erudus ID 969ce1a248854a8bb45ff9b46edc01dc

Version 2.0



19155

Fortified Cooking Wine Port 4.8% Vol. - 4 x 3L

Fortified Cooking Wine 21% Port 4x3litre

PRODUCT DESCRIPTION

A blend of de-alcoholised wine from concentrate and Port wine, lightly seasoned with salt.

Brand	Gourmet Classic
Manufacturer Product Code	7500-242
Product Type	Food
Product Category	Condiments
Storage Type	Ambient
Erudus ID	969ce1a248854a8bb45ff9b46edc01dc
Specification Type	Generic
Inner Component GTIN	5036582002625
Outer Case GTIN	05036582002694



INGREDIENTS

Ingredient Declaration

De-alcoholised wine from concentrate, Port (21%), Sugar, Brandy, Salt, Flavouring, Tartaric Acid, Preservatives (Potassium Sorbate, Sodium Benzoate, Potassium MetabiSULPHITE).

ALLERGENS

Product Contains:

Celery/Celeriac	No	Mustard	No
Cereals Containing Gluten	No	Nuts (Tree)	No
Barley	No	Almond nuts	No
Oats	No	Brazil nuts	No
Rye	No	Cashew nuts	No
Wheat (including Spelt and Khorasan)	No	Hazelnuts	No
Crustacea	No	Macadamia (Queensland) nuts	No
Eggs	No	Pecan nuts	No
Fish	No	Pistachio nuts	No
Lupin	No	Walnuts	No
Milk	No	Peanuts	No
Molluscs	No	Sesame Seeds	No
		Sulphur Dioxide and Sulphites	Yes
Palm Oil	No	Alcoholic Strength %Vol (ABV)	4.8 % Vol
Hydrogenated Vegetable Oil/Fat	No		
GM Protein/DNA	No		

SUPPLEMENTARY INGREDIENT INFORMATION

ADDITIVES

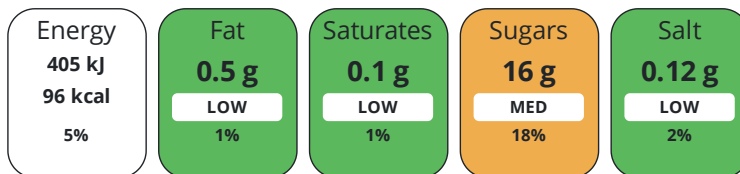
Product Contains:

Artificial Antioxidants	No	Artificial Flavourings	No
Artificial Colours	No	Artificial Preservatives	No
Artificial Flavour Enhancers	No	Artificial Sweeteners	No
Vegan Diet	Suitable for	Vegetarian Diet	Suitable for
Halal Diet	No	Kosher Diet	No

DIET
SUITABILITY

NUTRITIONAL
INFORMATION

Each 100g/ml portion contains:



of your reference intake.

Typical values per 100g/ml : Energy 96kcal / 405kj

Nutrient	per 100ml	RI per 100ml
Energy (kJ)	405 kJ	5%
Energy (kcal)	96 kcal	5%
Fat	< 0.5 g	1%
of which Saturates	< 0.1 g	1%
Carbohydrate	17 g	7%
of which Sugars	16 g	18%
Protein	< 0.5 g	1%
Salt	0.12 g	2%

Source of Nutritional Information Calculation from known/accepted datasets

SUPPLEMENTARY
NUTRITIONAL
INFORMATION

HANDLING &
STORAGE
INFORMATION

Directions For Use

Remove tamper-proof seal from packaging.

Storage Instructions

Store in a cool, dry place out of direct sunlight.

Storage Instructions After Opening

Keeps for up to 6 weeks after opening.

Shelf Life from Time of Production	730 Days	Exempt From Shelf Life Labelling	No
Shelf Life From Opening	42 Days		

ACCREDITATIONS/
CERTIFICATIONS/
ASSURANCE
SCHEMES
ORIGIN

BRCGS Certified		BRCGS Food Safety	
Sedex		The Vegan Society	

Product Country of Origin/Place of Portugal

Provenance

Additional Origin Details

Made in the UK

PRODUCT
CHARACTERISTICS

Standards Testing		Is shelf life testing undertaken?	Yes
Do you undertake trend analysis of microbiological results?	Yes	Commercially Sterile	No

Microbiological Standards

Organism	Description	Frequency	Target	Maximum	Sample (g or ml)
Yeast (cfu/g or ml)	cfu	Every Batch	<2	2	150
Moulds (cfu/g or ml)	cfu	Every Batch	<2	2	150
Aerobic Colony Count (ACC) (cfu/g or ml)	cfu	Every Batch	<1	1	150

Analytical Standards

Test	Description	Frequency	Target	Range	Sample (g or ml)
pH		Every Batch	<3.8	3 to 3.79	50
Specific Gravity	g/cm3	Every Batch	<1.06	1.02 to 1.06	100
Salt Content (%)	g/100ml	Every Batch	<0.11	0.09 to 0.11	0.15

ORGANOLEPTICS

Appearance	dark red colour
Aroma	on the nose: aromas of dark fruits
Taste	on the palate: full bodied and velvety with dark fruit flavours
Texture	liquid

HAZARD CONTROLS

Filters	Yes
----------------	-----

CONFIGURATION

Case Configuration	Inner Pack Configuration
Total Quantity of Inner Components in Outer Case	4 Units
Is the Outer Case Splittable?	Yes

PRODUCT WEIGHTS

Inner Component	
Variable Weight Consumer Item	No
Inner Component Volume	3 litre
Net Drained Weight	3.09 kg
Outer Case	
Outer Case Gross Weight	13.08 kg
Outer Case Net Weight	12.36 kg

PRODUCT DIMENSIONS

Inner Component	
Inner Component Depth	168 mm
Inner Component Width	104 mm
Inner Component Height	212 mm
Outer Case	
Outer Case Depth	336 mm
Outer Case Width	208 mm
Outer Case Height	212 mm

PALLET INFORMATION

Quantity of Cases Per Pallet Layer	14 Cases	Pallet Height	1.22 MTR
Quantity of Layers Per Pallet	5 Layers	Pallet Gross Weight	916 kg
Quantity of Cases Per Pallet	70 Cases		

PACKAGING

Inner Component Packaging

Type	Materials	Weight	Recycled Plastic %	Recyclable	Returnable	Composite
Bag	Plastic	35 g	- %			
Bag	Paper/Cardboard	145 g	- %			

Outer Case Packaging

Type	Materials	Weight	Recycled Plastic %	Recyclable	Returnable	Composite
Case	Plastic	140 g	- %			
Case	Paper/Cardboard	580 g	- %			

OTHER
INFORMATION
CONTACT
INFORMATION

Address

Gourmet Classic
Unit 14, Endeavour Business Park
Crow Arch Lane
Ringwood
Hampshire
BH24 1SF
England

P: (Phone) 01202 863040

The information on the [Erudus System](#) has been supplied by the manufacturers of the products and, whilst the owners of the Erudus System take steps to ensure the information is regularly updated, they give no warranty and no guarantee that the information is accurate. Product information and ingredients may change, please always read product labels carefully in addition to using the information provided by Erudus.

We do not accept liability for any inaccuracies or incorrect information contained on this site.
Please visit <http://www.erudus.com/terms-and-conditions> for full terms and conditions.