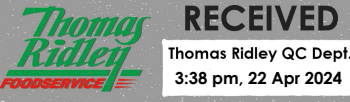


Changed Apr 18, 2024 13:46

Reviewed Apr 18, 2024 13:46

Erudus ID f84b5e4cda1b4977a141c4a53766216a

Version 2.1



**Thomas Ridley**  
FOODSERVICE

**RECEIVED**  
Thomas Ridley QC Dept.  
3:38 pm, 22 Apr 2024

The food information supplied by Thomas Ridley Foodservice has been provided by the respective product manufacturer. Whilst we use reasonable endeavours to check this information and ensure its accuracy, we do not give any warranty (whether express or implied), guarantee or representation that it is true, accurate or complete in any respect.

As product information, ingredients, nutritional guides and dietary or allergy advice may change from time to time, we recommend that you always carefully read the product label prior to using or consuming any such products. You should not solely rely upon the information we provide and make your own assessment as to the suitability or otherwise of any given product.



19177

# Whitby Whole Scampi 10\*450g

Whole Scampi 10x450g

## PRODUCT DESCRIPTION

Whole scampi (langoustine) tails in a crisp, golden crumb. Contains one or more tails per piece and added water.

Brand	Whitby Seafoods Ltd
Manufacturer Product Code	1601
Product Type	Food
Product Category	Prawns, Shrimp & Scampi
Storage Type	Frozen
Erudus ID	f84b5e4cda1b4977a141c4a53766216a
Specification Type	Fish and Seafood



Inner Component GTIN	5016316016012
Outer Case GTIN	05016316916015



## INGREDIENTS

### Ingredient Declaration

Scampi (CRUSTACEANS) (40%), Breadcrumbs (Wheat Flour [WHEAT Flour, Calcium Carbonate, Iron, Niacin, Thiamin], Salt, Yeast, rapeseed oil), Batter (Water, Wheat flour [WHEAT Flour, Calcium Carbonate, Iron, Niacin, Thiamin], Salt), Water, Stabilisers: E450, E451, E452.

## ALLERGENS

Product Contains:

<b>Celery/Celериac</b>	No	<b>Mustard</b>	No
<b>Cereals Containing Gluten</b>	Yes	<b>Nuts (Tree)</b>	No
<b>Barley</b>	No	<b>Almond nuts</b>	No
<b>Oats</b>	No	<b>Brazil nuts</b>	No
<b>Rye</b>	No	<b>Cashew nuts</b>	No
<b>Wheat (including Spelt and Khorasan)</b>	Yes	<b>Hazelnuts</b>	No
<b>Crustacea</b>	Yes	<b>Macadamia (Queensland) nuts</b>	No
<b>Eggs</b>	No	<b>Pecan nuts</b>	No
<b>Fish</b>	May Contain	<b>Pistachio nuts</b>	No
<b>Lupin</b>	No	<b>Walnuts</b>	No
<b>Milk</b>	No	<b>Peanuts</b>	No
<b>Molluscs</b>	May Contain	<b>Sesame Seeds</b>	No
		<b>Soybeans</b>	No
		<b>Sulphur Dioxide and Sulphites</b>	No

Risk Source:

<b>Fish (Risk Source)</b>	Factory	<b>Molluscs (Risk Source)</b>	Factory
---------------------------	---------	-------------------------------	---------

### Additional Allergen Information

For allergens including cereals containing GLUTEN please see ingredients in CAPITALS. May also contain FISH and MOLLUSCS.

#### SUPPLEMENTARY INGREDIENT INFORMATION

<b>Palm Oil</b>	No
<b>Hydrogenated Vegetable Oil/Fat</b>	No
<b>GM Protein/DNA</b>	No

#### ADDITIVES

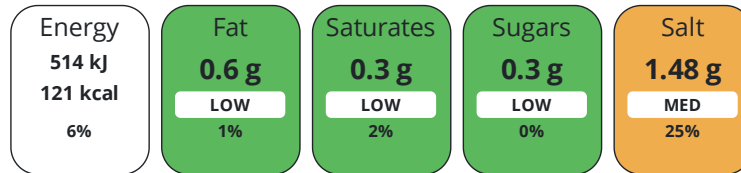
Product Contains:

<b>Artificial Antioxidants</b>	No	<b>Artificial Flavourings</b>	No
<b>Artificial Colours</b>	No	<b>Artificial Preservatives</b>	No
<b>Artificial Flavour Enhancers</b>	No	<b>Artificial Sweeteners</b>	No
<b>Halal Diet</b>	No	<b>Kosher Diet</b>	No

#### DIET SUITABILITY

#### NUTRITIONAL INFORMATION

Each 100g/ml portion contains:



of your reference intake.

Typical values per 100g/ml : Energy 121kcal / 514kJ

Nutrient	per 100g	RI per 100g
<b>Energy (kJ)</b>	514 kJ	6%
<b>Energy (kcal)</b>	121 kcal	6%
<b>Fat</b>	0.6 g	1%
of which Saturates	0.3 g	2%
<b>Carbohydrate</b>	20 g	8%
of which Sugars	0.3 g	0%
<b>Fibre</b>	1.7 g	
<b>Protein</b>	9.4 g	19%
<b>Salt</b>	1.48 g	25%

**Source of Nutritional Information**      Manufacturers analysis

#### SUPPLEMENTARY NUTRITIONAL INFORMATION

#### HANDLING & STORAGE INFORMATION

#### Directions For Use

Cooking Instructions: Always cook from frozen. The instructions below are just a guide; do make sure our scampi is piping hot throughout before serving. Once cooled do not reheat. Deep Fry: 4 mins. Deep fry from frozen. Preheat oil to 180°C (350°F). Cook for approximately 4 minutes until crisp and golden. "

#### Storage Instructions

Keep in the freezer at -18°C or colder and use by the best before date. Once defrosted, please don't refreeze.

<b>Shelf Life from Time of Production</b>	547 Days	<b>Exempt From Shelf Life Labelling</b>	No
<b>BRCGS Certified</b>		<b>Other Accreditation</b>	

#### ACCREDITATIONS/ CERTIFICATIONS/ ASSURANCE SCHEMES

ORIGIN	<b>Product Country of Origin/Place of Provenance</b> United Kingdom						
PRODUCT CHARACTERISTICS	<b>Additional Origin Details</b>						
	Scampi: Approved suppliers sourced from North Sea / Irish Sea. Breadcrumbs: Newlyweds Water: Whitby Seafoods Filtered Borehole Water Batter: Newlyweds Stabiliser: Fibrisol						
	Standards Testing						
	<b>Do you undertake trend analysis of microbiological results?</b>	No					
	<b>Is shelf life testing undertaken?</b>	No					
CONFIGURATION	Microbiological Standards						
	<b>Organism</b>	<b>Description</b>	<b>Frequency</b>	<b>Target</b>	<b>Maximum</b>	<b>Sample (g or ml)</b>	
	E. Coli (cfu/g or ml)		Annually	<10	10	1	
	Salmonella (cfu/g or ml)		Annually	<0	0	25	
	Coagulase-positive Staphylococci (cfu/g or ml)		Annually	<10	100	1	
PRODUCT WEIGHTS	Case Configuration		Inner Pack Configuration				
	<b>Total Quantity of Inner Components in Outer Case</b>	10 Units					
	<b>Is the Outer Case Splittable?</b>	No					
PRODUCT DIMENSIONS	Inner Component						
	<b>Variable Weight Consumer Item</b>	No					
	<b>Inner Component Weight</b>	450 g					
	Outer Case						
	<b>Outer Case Gross Weight</b>	4.68 kg					
PALLET INFORMATION	<b>Outer Case Net Weight</b>	4.5 kg					
	Inner Component						
	<b>Inner Component Depth</b>	280 mm					
	<b>Inner Component Width</b>	190 mm					
	<b>Inner Component Height</b>	50 mm					
	Outer Case						
	<b>Outer Case Depth</b>	108 mm					
PACKAGING	<b>Outer Case Width</b>	295 mm					
	<b>Outer Case Height</b>	395 mm					
	<b>Quantity of Cases Per Pallet Layer</b>	10 Cases	<b>Pallet Height</b>	1.68 MTR			
	<b>Quantity of Layers Per Pallet</b>	14 Layers	<b>Pallet Gross Weight</b>	683.9 kg			
	<b>Quantity of Cases Per Pallet</b>	140 Cases					
PACKAGING	Inner Component Packaging						
	<b>Type</b>	<b>Materials</b>	<b>Weight</b>	<b>Recycled Plastic %</b>	<b>Recyclable</b>	<b>Returnable</b>	<b>Composite</b>
	Bag	Plastic	8 g	- %			
	Bag	Other	8 g	- %			
	Outer Case Packaging						
	<b>Type</b>	<b>Materials</b>	<b>Weight</b>	<b>Recycled Plastic %</b>	<b>Recyclable</b>	<b>Returnable</b>	<b>Composite</b>
	Case	Paper/Cardboard	105 g	- %			

Transport Packaging

Type	Materials	Weight	Recycled Plastic %	Recyclable	Returnable	Composite
Other	Plastic	350 g	- %		Yes	
Other	Wood	28000 g	- %		Yes	

OTHER INFORMATION

Identification/Health Marks

GB YK 006

**Manufacturer Comments**

Amount in Bag: 30 (+/- 5)

CONTACT INFORMATION

Address

Whitby Seafoods Ltd  
 Fairfield way  
 Whitby Business park  
 Whitby  
 North Yorkshire  
 YO22 4PU  
 England

P: (Phone) 01947 829193

Complaints Contact

Neve Saltmarsh  
 Technical Services Coordinator  
 neve.saltmarsh@whitby-seafoods.com

The information on the [Erudus System](#) has been supplied by the manufacturers of the products and, whilst the owners of the Erudus System take steps to ensure the information is regularly updated, they give no warranty and no guarantee that the information is accurate. Product information and ingredients may change, please always read product labels carefully in addition to using the information provided by Erudus.

We do not accept liability for any inaccuracies or incorrect information contained on this site.  
 Please visit <http://www.erudus.com/terms-and-conditions> for full terms and conditions.