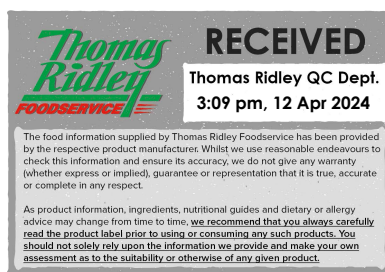


Changed Apr 11, 2024 13:30

Reviewed Apr 11, 2024 13:30

Erudus ID ee9c0fd8946649eba5c9b48623f7de00

Version 3.0



19217

White Mini Mallows 4x1kg

White Mini Mallows 4x1kg 4x1000g

PRODUCT DESCRIPTION

White cylindrical tubes, diameter 12mm +/- 1.5mm, length 11m +/- 1.5mm

Brand	Orchard Valley Foods Ltd
Manufacturer Product Code	OVF0544
Product Type	Food
Product Category	Confectionery
Storage Type	Ambient
Erudus ID	ee9c0fd8946649eba5c9b48623f7de00
Specification Type	Generic
Inner Component GTIN	5060292432021
Outer Case GTIN	5060292431994

INGREDIENTS

Ingredient Declaration

Glucose-Fructose Syrup, Sugar, Water, Gelatine (Pork), Dextrose, Maize Starch, Flavouring: Natural Vanilla.

ALLERGENS

Product Contains:

Celery/Celeriac	No	Mustard	No
Cereals Containing Gluten	No	Nuts (Tree)	No
Barley	No	Almond nuts	No
Oats	No	Brazil nuts	No
Rye	No	Cashew nuts	No
Wheat (including Spelt and Khorasan)	No	Hazelnuts	No
Crustacea	No	Macadamia (Queensland) nuts	No
Eggs	No	Pecan nuts	No
Fish	No	Pistachio nuts	No
Lupin	No	Walnuts	No
Milk	No	Peanuts	No
Molluscs	No	Sesame Seeds	No
		Soybeans	No
		Sulphur Dioxide and Sulphites	No

Additional Allergen Information

Wheat derived dextrose is used as an ingredient in the recipe at <20ppm. Milk, Soya and Fish are allergens handled on site, allergen controls are in place preventing the requirement to alibi label. Sulphites are naturally present in raw materials used in the recipe such as; glucose syrup and sugar at <10ppm. No allergen testing is conducted on the finished product - marshmallows.

SUPPLEMENTARY INGREDIENT INFORMATION

Palm Oil	No
Hydrogenated Vegetable Oil/Fat	No
GM Protein/DNA	No

ADDITIVES

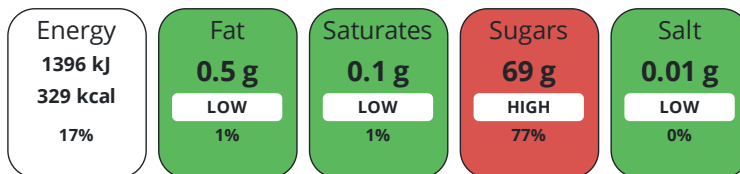
Product Contains:

Artificial Antioxidants	No	Artificial Flavourings	No
Artificial Colours	No	Artificial Preservatives	No
Artificial Flavour Enhancers	No	Artificial Sweeteners	No
Vegan Diet	No	Vegetarian Diet	No
Halal Diet	No	Kosher Diet	No

DIET SUITABILITY

NUTRITIONAL INFORMATION

Each 100g/ml portion contains:



of your reference intake.

Typical values per 100g/ml : Energy 329kcal / 1396kJ

Nutrient	per 100g	RI per 100g
Energy (kJ)	1396 kJ	17%
Energy (kcal)	329 kcal	16%
Fat	< 0.5 g	1%
of which Saturates	< 0.1 g	1%
Carbohydrate	79 g	30%
of which Sugars	69 g	77%
Protein	3.2 g	6%
Salt	< 0.01 g	0%
Sodium	< 0.01 mg	

SUPPLEMENTARY NUTRITIONAL INFORMATION

HFSS (HIGH IN FAT, SALT AND SUGAR) HANDLING & STORAGE INFORMATION

HFSS Status	Yes
--------------------	-----

Directions For Use

Ready to eat marshmallows

Storage Instructions

Store cool and dry away from sunlight. Maximum temperature 25°C.

Shelf Life from Time of Production	517 Days	Exempt From Shelf Life Labelling	No
---	----------	---	----

BRCGS Certified

ACCREDITATIONS/ CERTIFICATIONS/ ASSURANCE SCHEMES ORIGIN

Product Country of Origin/Place of Provenance Belgium

Additional Origin Details

Please refer to specification for ingredients country of origin information

PRODUCT CHARACTERISTICS

Standards Testing

Do you undertake trend analysis of microbiological results?	No	Is shelf life testing undertaken?	No
--	----	--	----

Microbiological Standards

Organism	Description	Frequency	Target	Maximum	Sample (g or ml)
E. Coli (cfu/g or ml)	cfu/g	Annually	<10	10	1
Staphylococcus Aureus (cfu/g or ml)	cfu/g	Annually	<10	100	1
Total Viable Count (TVC) (cfu/g or ml)	cfu/g	Annually	<1000	100000	1
Salmonella (cfu/g or ml)	25g	Annually	<0	0	25
Yeast (cfu/g or ml)	cfu/g	Annually	<100	1000	1
Moulds (cfu/g or ml)	cfu/g	Annually	<100	1000	1

CONFIGURATION

Case Configuration

Inner Pack Configuration

Total Quantity of Inner Components in Outer Case 4 Units

PRODUCT WEIGHTS

Inner Component

Variable Weight Consumer Item No

Inner Component Weight 1000 g

Outer Case

Outer Case Gross Weight 4.5 kg

Outer Case Net Weight 4 kg

PRODUCT DIMENSIONS

Inner Component

Inner Component Depth 600 mm

Inner Component Width 405 mm

Inner Component Height 0 mm

Outer Case

Outer Case Depth 590 mm

Outer Case Width 390 mm

Outer Case Height 125 mm

PALLET INFORMATION

Quantity of Cases Per Pallet Layer 5 Cases

Pallet Height 2.2 MTR

Quantity of Layers Per Pallet 9 Layers

Quantity of Cases Per Pallet 45 Cases

PACKAGING

Inner Component Packaging

Type	Materials	Weight	Recycled Plastic %	Recyclable	Returnable	Composite
Bag	Plastic	14.98 g	- %			

Outer Case Packaging

Type	Materials	Weight	Recycled Plastic %	Recyclable	Returnable	Composite
Case	Paper/Cardboard	487 g	- %			

OTHER INFORMATION

Commodity Code 17049099

CONTACT
INFORMATION

Address

Orchard Valley Foods Ltd
4 Lower Teme Business Park
Burford
Tenbury Wells
Worcestershire
WR15 8SZ
England

P. (Phone) 01584 811137

Technical Contact

Technical
Technical Team
qa@orchard-valley.co.uk

The information on the [Erudus System](#) has been supplied by the manufacturers of the products and, whilst the owners of the Erudus System take steps to ensure the information is regularly updated, they give no warranty and no guarantee that the information is accurate. Product information and ingredients may change, please always read product labels carefully in addition to using the information provided by Erudus.

We do not accept liability for any inaccuracies or incorrect information contained on this site.
Please visit <http://www.erudus.com/terms-and-conditions> for full terms and conditions.