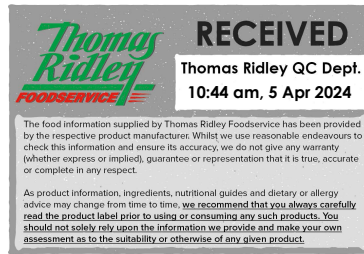


Changed Apr 03, 2024 09:17

Reviewed Apr 03, 2024 09:17

Erudus ID 03adf07356e544b6b81341a1c0ba0c43

Version 2.1



**Thomas Ridley**  
FOODSERVICE

**RECEIVED**  
Thomas Ridley QC Dept.  
10:44 am, 5 Apr 2024

The food information supplied by Thomas Ridley Foodservice has been provided by the respective product manufacturer. Whilst we use reasonable endeavours to check this information and ensure its accuracy, we do not give any warranty (whether express or implied), guarantee or representation that it is true, accurate or complete in any respect.

As product information, ingredients, nutritional guides and dietary or allergy advice may change from time to time, we recommend that you always carefully read the product label prior to using or consuming any such products. You should not solely rely upon the information we provide and make your own assessment as to the suitability or otherwise of any given product.



# Fish Stock Mix 700g

Fish Stock Mix 2x700g

## PRODUCT DESCRIPTION

A composite material produced by the dry blending of food ingredients. A fine, deep beige coloured free-flowing powder, with a distinctive odour of fish. It has the characteristic appearance and flavour of Fish Stock when reconstituted with water.

<b>Brand</b>	Essential Cuisine Limited
<b>Manufacturer Product Code</b>	SW00049 – ECFS/1
<b>Manufacturer Version Number</b>	1
<b>Effective Date</b>	Mar 3, 2023
<b>Product Type</b>	Food
<b>Product Category</b>	Gravy / Bouillon
<b>Storage Type</b>	Ambient
<b>Erudus ID</b>	03adf07356e544b6b81341a1c0ba0c43
<b>Specification Type</b>	Generic
<b>Inner Component GTIN</b>	5029540000030
<b>Outer Case GTIN</b>	05029540000672



## INGREDIENTS

### Ingredient Declaration

Ingredients when reconstituted:

Fish Stock (Water, FISH, Onion, CELERIAC, Leek, Carrot Extract, Spice, Herb), Salt, Maltodextrin, Yeast Extract, Rapeseed Oil.

## ALLERGENS

Product Contains:

<b>Celery/Celeriac</b>	Yes	<b>Mustard</b>	No
<b>Cereals Containing Gluten</b>	No	<b>Nuts (Tree)</b>	No
<b>Barley</b>	No	<b>Almond nuts</b>	No
<b>Oats</b>	No	<b>Brazil nuts</b>	No
<b>Rye</b>	No	<b>Cashew nuts</b>	No
<b>Wheat (including Spelt and Khorasan)</b>	No	<b>Hazelnuts</b>	No
<b>Crustacea</b>	No	<b>Macadamia (Queensland) nuts</b>	No
<b>Eggs</b>	No	<b>Pecan nuts</b>	No
<b>Fish</b>	Yes	<b>Pistachio nuts</b>	No
<b>Lupin</b>	No	<b>Walnuts</b>	No
<b>Milk</b>	No	<b>Peanuts</b>	No
<b>Molluscs</b>	No	<b>Sesame Seeds</b>	No
		<b>Soybeans</b>	No
		<b>Sulphur Dioxide and Sulphites</b>	No

## FREE FROM CLAIMS

<b>Gluten-Free</b>	Yes
--------------------	-----

SUPPLEMENTARY  
INGREDIENT  
INFORMATION

<b>Palm Oil</b>	No
<b>Hydrogenated Vegetable Oil/Fat</b>	No
<b>GM Protein/DNA</b>	No

ADDITIVES

Product Contains:

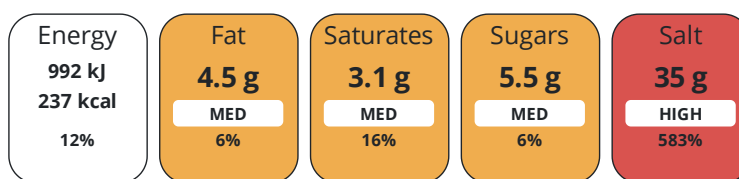
<b>Artificial Antioxidants</b>	No	<b>Artificial Flavourings</b>	No
<b>Artificial Colours</b>	No	<b>Artificial Preservatives</b>	No
<b>Artificial Flavour Enhancers</b>	No	<b>Artificial Sweeteners</b>	No

DIET  
SUITABILITY

<b>Vegan Diet</b>	No	<b>Vegetarian Diet</b>	No
<b>Halal Diet</b>	No	<b>Kosher Diet</b>	No

NUTRITIONAL  
INFORMATION

Each 100g/ml portion contains:



of your reference intake.

Typical values per 100g/ml : Energy 237kcal / 992kJ

Nutrient	per 100g	RI per 100g
<b>Energy (kJ)</b>	992 kJ	12%
<b>Energy (kcal)</b>	237 kcal	12%
<b>Fat</b>	4.5 g	6%
<b>of which Saturates</b>	3.1 g	16%
<b>Carbohydrate</b>	22.5 g	9%
<b>of which Sugars</b>	5.5 g	6%
<b>Fibre</b>	2.7 g	
<b>Protein</b>	26.5 g	53%
<b>Salt</b>	35 g	583%

SUPPLEMENTARY  
NUTRITIONAL  
INFORMATION

HANDLING &  
STORAGE  
INFORMATION

**Directions For Use**

To make stock, simply add the required amount of stock mix (12 - 20g) into 1 litre (1.75 pints) of boiling water and stir until dissolved.

**Storage Instructions**

Always reseal after use and keep in a cool, dry place.

<b>Shelf Life from Time of Production</b>	547 Days	<b>Exempt From Shelf Life Labelling</b>	No
---	----------	---	----

ACCREDITATIONS/  
CERTIFICATIONS/  
ASSURANCE  
SCHEMES  
ORIGIN

<b>BRCGS Certified</b>	<b>Food for Life Supplier Scheme</b>
<b>Other Accreditation</b>	

**Product Country of Origin/Place of** United Kingdom

**Provenance**

**Additional Origin Details**

Manufactured in the UK using materials sourced from EU and non EU countries.

PRODUCT  
CHARACTERISTICS

Standards Testing

CONFIGURATION	Case Configuration		Inner Pack Configuration					
	<b>Total Quantity of Inner Components in Outer Case</b>	2 Units						
	<b>Is the Outer Case Splittable?</b>	Yes						
PRODUCT WEIGHTS	Inner Component							
	<b>Variable Weight Consumer Item</b>	No						
	<b>Inner Component Weight</b>	700 g						
	Outer Case							
	<b>Outer Case Gross Weight</b>	1.6 kg						
	<b>Outer Case Net Weight</b>	1.4 kg						
PRODUCT DIMENSIONS	Inner Component							
	<b>Inner Component Depth</b>	132 mm						
	<b>Inner Component Width</b>	132 mm						
	<b>Inner Component Height</b>	132 mm						
	Outer Case							
	<b>Outer Case Depth</b>	265 mm						
	<b>Outer Case Width</b>	132 mm						
	<b>Outer Case Height</b>	135 mm						
	PALLET INFORMATION	<b>Quantity of Cases Per Pallet Layer</b>	35 Cases	<b>Pallet Height</b>	1.3 MTR			
		<b>Quantity of Layers Per Pallet</b>	8 Layers	<b>Pallet Gross Weight</b>	482 kg			
<b>Quantity of Cases Per Pallet</b>		280 Cases						
PACKAGING	Inner Component Packaging							
	<b>Type</b>	<b>Materials</b>	<b>Weight</b>	<b>Recycled Plastic %</b>	<b>Recyclable</b>	<b>Returnable</b>	<b>Composite</b>	
	Tub	Plastic	66 g	- %				
	Outer Case Packaging							
	<b>Type</b>	<b>Materials</b>	<b>Weight</b>	<b>Recycled Plastic %</b>	<b>Recyclable</b>	<b>Returnable</b>	<b>Composite</b>	
	Paper/Polyethylene	Plastic	10 g	- %				
	Paper/Polyethylene	Paper/Cardboard	1 g	- %				
	Transport Packaging							
	<b>Type</b>	<b>Materials</b>	<b>Weight</b>	<b>Recycled Plastic %</b>	<b>Recyclable</b>	<b>Returnable</b>	<b>Composite</b>	
	Other	Plastic	500 g	- %				
	Other	Paper/Cardboard	5000 g	- %				
	Other	Wood	30000 g	- %				
	MARKETING INFORMATION	<b>Marketing Description</b>						
		A white fish stock made with quality whole fish with a characteristic flavour of delicious chef made fish stock. Looks like fish stock, tastes as a fish stock should, add it to your cream reductions at the last minute and taste the difference.						
	OTHER INFORMATION	<b>Intrastat/Taric Code</b>	2103					
<b>Manufacturer Comments</b>								
N/A								

CONTACT  
INFORMATION

Address

Essential Cuisine Limited  
Essential Cuisine Ltd  
Browning Way  
Winsford  
Cheshire  
CW7 2RH  
United Kingdom

P. (Phone) 01606 541490

The information on the [Erudus System](#) has been supplied by the manufacturers of the products and, whilst the owners of the Erudus System take steps to ensure the information is regularly updated, they give no warranty and no guarantee that the information is accurate. Product information and ingredients may change, please always read product labels carefully in addition to using the information provided by Erudus.

We do not accept liability for any inaccuracies or incorrect information contained on this site.  
Please visit <http://www.erudus.com/terms-and-conditions> for full terms and conditions.