

JUS ROL Shortcrust Pastry Block (4 x 1500g)

Shortcrust Pastry 4x1.5kg

PRODUCT DESCRIPTION

Frozen, uncooked Shortcrust Pastry blocks

Brand	PA Ross Ltd
Manufacturer Product Code	I000238
Product Type	Food
Product Category	Pastry
Storage Type	Frozen
Erudus ID	797592c395d44f48b0fbdeded1a5cf6
Specification Type	Generic



Inner Component GTIN	5010084303688
Outer Case GTIN	5010084303695



INGREDIENTS

Ingredient Declaration

WHEAT flour, vegetable oils and fats (palm, rapeseed), water, sugar, salt, emulsifier (mono- and diglycerides of fatty acids), flour treatment agent (ascorbic acid).

ALLERGENS

Product Contains:

Celery/Celeriac	No	Mustard	No
Cereals Containing Gluten	Yes	Nuts (Tree)	No
Barley	No	Almond nuts	No
Oats	No	Brazil nuts	No
Rye	No	Cashew nuts	No
Wheat (including Spelt and Khorasan)	Yes	Hazelnuts	No
Crustacea	No	Macadamia (Queensland) nuts	No
Eggs	No	Pecan nuts	No
Fish	No	Pistachio nuts	No
Lupin	No	Walnuts	No
Milk	No	Peanuts	No
Molluscs	No	Sesame Seeds	No
		Soybeans	No
		Sulphur Dioxide and Sulphites	No

Additional Allergen Information

For allergens, see ingredients in bold.

SUPPLEMENTARY INGREDIENT INFORMATION

Palm Oil	Yes
Hydrogenated Vegetable Oil/Fat	No
GM Protein/DNA	No

ADDITIVES

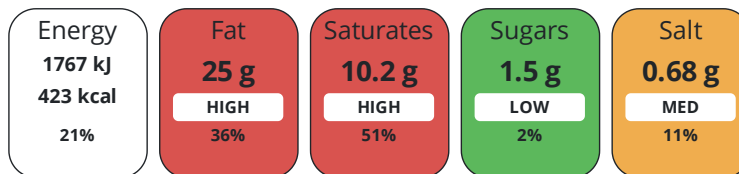
Product Contains:

Artificial Antioxidants	No	Artificial Flavourings	No
Artificial Colours	No	Artificial Preservatives	No
Artificial Flavour Enhancers	No	Artificial Sweeteners	No
Vegan Diet	Suitable for	Vegetarian Diet	Suitable for
Halal Diet	No	Kosher Diet	No

DIET
SUITABILITY

NUTRITIONAL
INFORMATION

Each 100g/ml portion contains:



of your reference intake.

Typical values per 100g/ml : Energy 423kcal / 1767kJ

Nutrient	per 100g	RI per 100g	per 50g serving	RI per 50g serving
Energy (kJ)	1767 kJ	21%	883.5 kJ	11%
Energy (kcal)	423 kcal	21%	211.5 kcal	11%
Fat	25 g	36%	12.5 g	18%
of which Saturates	10.2 g	51%	5.1 g	26%
Carbohydrate	43.1 g	17%	21.6 g	8%
of which Sugars	1.5 g	2%	0.8 g	1%
Fibre	1.3 g		0.7 g	
Protein	5.8 g	12%	2.9 g	6%
Salt	0.68 g	11%	0.3 g	5%

Serving Size 50 g

SUPPLEMENTARY
NUTRITIONAL
INFORMATION

HANDLING &
STORAGE
INFORMATION

Directions For Use

Ensure the pastry is thoroughly defrosted before use. 1. Remove required amount of blocks from outer packaging and defrost at room temperature for at least 2½ hours before use. Alternatively, defrost overnight in a refrigerator and then stand at room temperature for at least 1 hour before use. 2. After defrosting the pastry should be cool and flexible. 3. Cut the block into 2 2. Lightly flour both the work surface and the pastry. Roll out each piece to the desired thickness (about 3 - 4mm is recommended). Allow the sheet to stand for 5 minutes to help reduce shrinkage. If the pastry is difficult to roll out it may still be too cold and must be left to defrost longer. 4. Bake in a preheated oven at 200°C/400°F/Gas Mark 6 or at the temperature required by your recipe. For best results for hand rolling cut the block into 2 2 and roll out each separately. Each half rolls to approximately 50cm x 38cm. Alternatively the whole block can be rolled down to a sheet of approximately 70cm x 50cm. If you have mechanical rolling equipment the sheet will roll down to approximately 120cm x 30cm. As a guide, depending on the size of sheet used and its final thickness, each block will yield the approximate quantities of pastry items listed below.

Storage Instructions

KEEP FROZEN AT -18°C. DO NOT REFREEZE ONCE DEFROSTED. ONCE DEFROSTED USE WITHIN 24 HOURS.

Shelf Life from Time of Production	558 Days	Exempt From Shelf Life Labelling	No
---	----------	---	----

Other Accreditation

BS EN ISO 22000:2005 FSSC 22000 Certification ISO/TS 22002-1:2009

ORIGIN

Product Country of Origin/Place of Great Britain

Provenance

PRODUCT CHARACTERISTICS CONFIGURATION

Standards Testing

Case Configuration

Inner Pack Configuration

Total Quantity of Inner Components in 4 Units

Outer Case

Is the Outer Case Splittable? No

PRODUCT WEIGHTS

Inner Component

Variable Weight Consumer Item No

Inner Component Weight 1.5 kg

Outer Case

Outer Case Gross Weight 6.18 kg

Outer Case Net Weight 6 kg

PRODUCT DIMENSIONS

Inner Component

Inner Component Depth 325 mm

Inner Component Width 25 mm

Inner Component Height 217 mm

Outer Case

Outer Case Depth 345 mm

Outer Case Width 225 mm

Outer Case Height 108 mm

PALLET INFORMATION

Quantity of Cases Per Pallet Layer 13 Cases

Pallet Height 1.4 MTR

Quantity of Layers Per Pallet 12 Layers

Pallet Gross Weight 988 kg

Quantity of Cases Per Pallet 156 Cases

PACKAGING

Inner Component Packaging

Type	Materials	Weight	Recycled Plastic %	Recyclable	Returnable	Composite
Film	Plastic	7.35 g	- %			

Outer Case Packaging

Type	Materials	Weight	Recycled Plastic %	Recyclable	Returnable	Composite
Case	Paper/Cardboard	146 g	- %			

OTHER INFORMATION

CONTACT
INFORMATION

Address

PA Ross Ltd
Ruskin Chambers
Drury Lane
Knutsford
Cheshire
WA166HA
United Kingdom

~~P. (Phone)~~ 01565 755500

Commercial Contact

Lucy Filby
Sales Director
lucy.filby@paross.co.uk

~~P. (Phone)~~ 07872 822708

The information on the [Erudus System](#) has been supplied by the manufacturers of the products and, whilst the owners of the Erudus System take steps to ensure the information is regularly updated, they give no warranty and no guarantee that the information is accurate. Product information and ingredients may change, please always read product labels carefully in addition to using the information provided by Erudus.

We do not accept liability for any inaccuracies or incorrect information contained on this site.
Please visit <http://www.erudus.com/terms-and-conditions> for full terms and conditions.