

Changed Apr 02, 2024 11:13

Reviewed Apr 02, 2024 11:13

Erudus ID 220c3d7d1ed34eccbb893fec9e58676b

Version 2.0

21155

# Premier Veal Jus 1kg

Veal Jus 2x1kg

## PRODUCT DESCRIPTION

A composite paste, produced by the blending of food ingredients. A dark brown coloured viscous paste, with a distinctive odour of veal. It has the characteristic appearance and flavour of Veal Jus when reconstituted with water as directed.

Brand	Essential Cuisine Limited
Manufacturer Product Code	SW00003 - ECPVJ/5
Manufacturer Version Number	1
Effective Date	May 12, 2022
Product Type	Food
Product Category	Gravy / Bouillon
Storage Type	Ambient
Erudus ID	220c3d7d1ed34eccbb893fec9e58676b
Specification Type	Generic

Inner Component GTIN	5029540000252
Outer Case GTIN	05029540000269



## INGREDIENTS

### Ingredient Declaration

Ingredients when reconstituted:

Veal Stock (Water, Veal Juice, Veal Fat, Carrot, Tomato, Mushroom, Garlic), Beef Stock (Water, Beef Stock), Modified Tapioca Starch, Salt, Sugar, Flavouring, Yeast Extract, Colour (Caramel), Sunflower Oil.

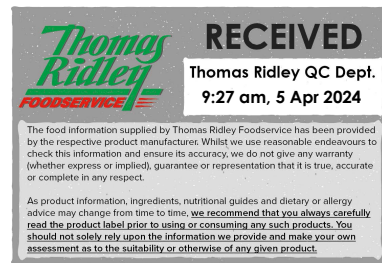
## ALLERGENS

Product Contains:

Celery/Celeriac	No	Mustard	No
Cereals Containing Gluten	No	Nuts (Tree)	No
Barley	No	Almond nuts	No
Oats	No	Brazil nuts	No
Rye	No	Cashew nuts	No
Wheat (including Spelt and Khorasan)	No	Hazelnuts	No
Crustacea	No	Macadamia (Queensland) nuts	No
Eggs	No	Pecan nuts	No
Fish	No	Pistachio nuts	No
Lupin	No	Walnuts	No
Milk	No	Peanuts	No
Molluscs	No	Sesame Seeds	No
		Soybeans	No
		Sulphur Dioxide and Sulphites	No

## FREE FROM CLAIMS

Gluten-Free	Yes
-------------	-----



SUPPLEMENTARY  
INGREDIENT  
INFORMATION

<b>Palm Oil</b>	No
<b>Hydrogenated Vegetable Oil/Fat</b>	No
<b>GM Protein/DNA</b>	No

ADDITIVES

*Product Contains:*

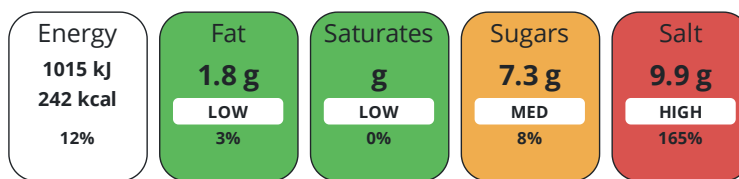
<b>Artificial Antioxidants</b>	No	<b>Artificial Flavourings</b>	Yes
<b>Artificial Colours</b>	Yes	<b>Artificial Preservatives</b>	No
<b>Artificial Flavour Enhancers</b>	No	<b>Artificial Sweeteners</b>	No

DIET  
SUITABILITY

<b>Vegan Diet</b>	No	<b>Vegetarian Diet</b>	No
<b>Halal Diet</b>	No	<b>Kosher Diet</b>	No

NUTRITIONAL  
INFORMATION

Each 100g/ml portion contains:



of your reference intake.

Typical values per 100g/ml : Energy 242kcal / 1015kj

Nutrient	per 100g	RI per 100g
<b>Energy (kJ)</b>	1015 kJ	12%
<b>Energy (kcal)</b>	242 kcal	12%
<b>Fat</b>	1.8 g	3%
<b>of which Saturates</b>	0 g	0%
<b>Carbohydrate</b>	30.7 g	12%
<b>of which Sugars</b>	7.3 g	8%
<b>Fibre</b>	0 g	
<b>Protein</b>	25.6 g	51%
<b>Salt</b>	9.9 g	165%
<b>Sodium</b>	3900 mg	

SUPPLEMENTARY  
NUTRITIONAL  
INFORMATION

HANDLING &  
STORAGE  
INFORMATION

**Directions For Use**

To make jus, simply whisk or stir 125g of Premier jus concentrate into 1litre of warm water in a suitable saucepan. Bring to the boil stirring constantly and allow to simmer for 2-3 minutes. Your Premier Jus is now ready to use.

**Storage Instructions**

Always reseal after use and keep in a cool, dry place.

<b>Shelf Life from Time of Production</b>	456 Days	<b>Exempt From Shelf Life Labelling</b>	No
-------------------------------------------	----------	-----------------------------------------	----

ACCREDITATIONS/  
CERTIFICATIONS/  
ASSURANCE  
SCHEMES  
ORIGIN

<b>BRCGS Certified</b>		<b>Food for Life Supplier Scheme</b>	
------------------------	--	--------------------------------------	--

**Other Accreditation**

**Product Country of Origin/Place of** United Kingdom

**Provenance**

**Additional Origin Details**

N/A

PRODUCT CHARACTERISTICS CONFIGURATION

Standards Testing

Case Configuration

Inner Pack Configuration

**Total Quantity of Inner Components in Outer Case** 2 Units

**Outer Case**

**Is the Outer Case Splittable?** Yes

PRODUCT WEIGHTS

Inner Component

**Variable Weight Consumer Item** No

**Inner Component Weight** 1 kg

Outer Case

**Outer Case Gross Weight** 2.2 kg

**Outer Case Net Weight** 2 kg

PRODUCT DIMENSIONS

Inner Component

**Inner Component Depth** 132 mm

**Inner Component Width** 132 mm

**Inner Component Height** 132 mm

Outer Case

**Outer Case Depth** 265 mm

**Outer Case Width** 132 mm

**Outer Case Height** 135 mm

PALLET INFORMATION

**Quantity of Cases Per Pallet Layer** 35 Cases

**Pallet Height** 1.3 MTR

**Quantity of Layers Per Pallet** 8 Layers

**Pallet Gross Weight** 678 kg

**Quantity of Cases Per Pallet** 280 Cases

PACKAGING

Inner Component Packaging

Type	Materials	Weight	Recycled Plastic %	Recyclable	Returnable	Composite
Tub	Plastic	55 g	- %			

Outer Case Packaging

Type	Materials	Weight	Recycled Plastic %	Recyclable	Returnable	Composite
Paper/Polyethylene	Plastic	10 g	- %			
Paper/Polyethylene	Paper/Cardboard	1 g	- %			

Transport Packaging

Type	Materials	Weight	Recycled Plastic %	Recyclable	Returnable	Composite
Other	Plastic	500 g	- %			
Other	Paper/Cardboard	5000 g	- %			
Other	Wood	30000 g	- %			

MARKETING INFORMATION

**Marketing Description**

5 star jus in minutes. Tastes and performs like a kitchen-made jus, without the time consuming make up.

OTHER INFORMATION

**Intrastat/Taric Code** 2103

**Manufacturer Comments**

N/A

CONTACT  
INFORMATION

Address

Essential Cuisine Limited  
Essential Cuisine Ltd  
Browning Way  
Winsford  
Cheshire  
CW7 2RH  
United Kingdom

P. (Phone) 01606 541490

The information on the [Erudus System](#) has been supplied by the manufacturers of the products and, whilst the owners of the Erudus System take steps to ensure the information is regularly updated, they give no warranty and no guarantee that the information is accurate. Product information and ingredients may change, please always read product labels carefully in addition to using the information provided by Erudus.

We do not accept liability for any inaccuracies or incorrect information contained on this site.  
Please visit <http://www.erudus.com/terms-and-conditions> for full terms and conditions.