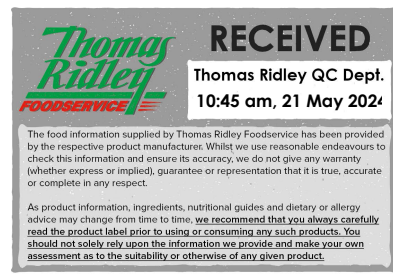


Changed May 20, 2024 15:19
Reviewed May 20, 2024 15:19
Erudus ID da3e739c6ec74d6c8956e9e191d7e3cf
Version 5.0



21156

No.1 Savoury Gravy Mix 1.5kg

No.1 Savoury Gravy Mix 2x1.5kg

PRODUCT DESCRIPTION

A composite material produced by the dry blending of food ingredients. A fine, light greyish-brown coloured, free-flowing powder with a distinctive odour of savoury vegetables. It has the characteristic appearance and flavour of a rich tasting savoury gravy when reconstituted with water.

| | |
|------------------------------------|----------------------------------|
| Brand | Essential Cuisine Limited |
| Manufacturer Product Code | SW00592 |
| Manufacturer Version Number | 2 |
| Effective Date | Feb 27, 2024 |
| Product Type | Food |
| Product Category | Gravy / Bouillon |
| Storage Type | Ambient |
| Erudus ID | da3e739c6ec74d6c8956e9e191d7e3cf |
| Specification Type | Generic |



| | |
|-----------------------------|----------------|
| Inner Component GTIN | 5029540000801 |
| Outer Case GTIN | 05029540000825 |



INGREDIENTS

Ingredient Declaration

Ingredients when reconstituted:

Vegetable Stock (Water, Onion, Tomato, Carrot Extract, Herb), Modified Tapioca Starch, Flavourings, Glucose Syrup, Sugar, Salt, Yeast Extracts, Colour (Caramel), Maltodextrin, Rapeseed Oil.

ALLERGENS

Product Contains:

| | |
|---|----|
| Celery/Celeriac | No |
| Cereals Containing Gluten | No |
| Barley | No |
| Oats | No |
| Rye | No |
| Wheat (including Spelt and Khorasan) | No |
| Crustacea | No |
| Eggs | No |
| Fish | No |
| Lupin | No |
| Milk | No |
| Molluscs | No |
| Mustard | No |
| Nuts (Tree) | No |
| Almond nuts | No |
| Brazil nuts | No |
| Cashew nuts | No |
| Hazelnuts | No |
| Macadamia (Queensland) nuts | No |
| Pecan nuts | No |
| Pistachio nuts | No |
| Walnuts | No |
| Peanuts | No |
| Sesame Seeds | No |
| Soybeans | No |
| Sulphur Dioxide and Sulphites | No |

FREE FROM CLAIMS

| | |
|--------------------|-----|
| Gluten-Free | Yes |
|--------------------|-----|

SUPPLEMENTARY INGREDIENT INFORMATION

| | |
|---------------------------------------|----|
| Palm Oil | No |
| Hydrogenated Vegetable Oil/Fat | No |
| GM Protein/DNA | No |

ADDITIVES

Product Contains:

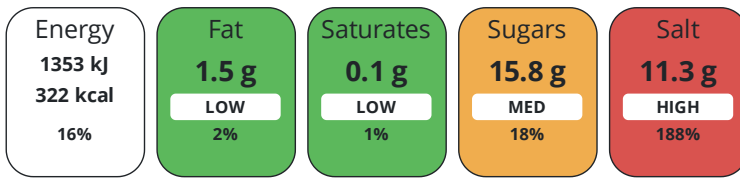
| | |
|-------------------------------------|-----|
| Artificial Antioxidants | No |
| Artificial Colours | Yes |
| Artificial Flavour Enhancers | No |
| Artificial Flavourings | Yes |
| Artificial Preservatives | No |
| Artificial Sweeteners | No |

DIET SUITABILITY

| | | | |
|-------------------|--------------|------------------------|--------------|
| Vegan Diet | Suitable for | Vegetarian Diet | Suitable for |
| Halal Diet | No | Kosher Diet | No |

NUTRITIONAL INFORMATION

Each 100g/ml portion contains:



of your reference intake.

Typical values per 100g/ml : Energy 322kcal / 1353kj

| Nutrient | per 100g | RI per 100g |
|--------------------|----------|-------------|
| Energy (kJ) | 1353 kJ | 16% |
| Energy (kcal) | 322 kcal | 16% |
| Fat | 1.5 g | 2% |
| of which Saturates | 0.1 g | 1% |
| Carbohydrate | 71.8 g | 28% |
| of which Sugars | 15.8 g | 18% |
| Fibre | 0.3 g | |
| Protein | 5.5 g | 11% |
| Salt | 11.3 g | 188% |
| Sodium | 4500 mg | |

SUPPLEMENTARY NUTRITIONAL INFORMATION

HANDLING & STORAGE INFORMATION

Directions For Use

To make savoury gravy, simply whisk 75g of gravy mix into 1 litre of lukewarm (not hot) water in a suitable saucepan. Bring to boil, stirring constantly. Allow to simmer for 4-5 minutes. Your gravy is now ready to use.

Storage Instructions

Always reseal after use and keep in a cool place.

Shelf Life from Time of Production

547 Days

Exempt From Shelf Life Labelling

No

ACCREDITATIONS/ CERTIFICATIONS/ ASSURANCE SCHEMES

BRCGS Certified

School Approved (The Requirement for School Food Regulation 2014)

Food for Life Supplier Scheme

Other Accreditation

ORIGIN

Product Country of Origin/Place of

United Kingdom

Provenance

Additional Origin Details

Manufactured in the UK using materials from EU and non EU sources

PRODUCT CHARACTERISTICS

Standards Testing

CONFIGURATION

Case Configuration

Total Quantity of Inner Components in Outer Case

2 Units

Is the Outer Case Splittable?

Yes

Inner Pack Configuration

PRODUCT WEIGHTS

Inner Component

| | |
|--------------------------------------|---------|
| Variable Weight Consumer Item | No |
| Inner Component Weight | 1.5 kg |
| Outer Case | |
| Outer Case Gross Weight | 3.27 kg |
| Outer Case Net Weight | 3 kg |

PRODUCT DIMENSIONS

Inner Component

| | |
|-------------------------------|--------|
| Inner Component Depth | 175 mm |
| Inner Component Width | 175 mm |
| Inner Component Height | 157 mm |

Outer Case

| | |
|--------------------------|--------|
| Outer Case Depth | 350 mm |
| Outer Case Width | 175 mm |
| Outer Case Height | 157 mm |

PALLET INFORMATION

| | |
|---|-----------|
| Quantity of Cases Per Pallet Layer | 20 Cases |
| Quantity of Layers Per Pallet | 7 Layers |
| Quantity of Cases Per Pallet | 140 Cases |
| Pallet Height | 1.5 MTR |
| Pallet Gross Weight | 478 kg |

PACKAGING

Inner Component Packaging

| Type | Materials | Weight | Recycled Plastic % | Recyclable | Returnable | Composite |
|------|-----------------|--------|--------------------|------------|------------|-----------|
| Tub | Plastic | 230 g | - % | | | |
| Tub | Paper/Cardboard | 2 g | - % | | | |

Outer Case Packaging

| Type | Materials | Weight | Recycled Plastic % | Recyclable | Returnable | Composite |
|------|-----------------|---------|--------------------|------------|------------|-----------|
| Case | Plastic | 20 g | - % | | | |
| Case | Paper/Cardboard | 23.23 g | - % | | | |

Transport Packaging

| Type | Materials | Weight | Recycled Plastic % | Recyclable | Returnable | Composite |
|-------|-----------------|---------|--------------------|------------|------------|-----------|
| Other | Plastic | 500 g | - % | | | |
| Other | Paper/Cardboard | 500 g | - % | | | |
| Other | Wood | 30000 g | - % | | | |

MARKETING INFORMATION

Marketing Description

No 1 Savoury Gravy is made with the finest ingredients to give balanced, flavourful gravy, which is suitable for vegans, vegetarians and coeliac's. This savoury gravy answers the demand for a meat-free gravy that tastes as gravy should. It also meets 2024 salt targets.

OTHER INFORMATION

| | |
|-----------------------------|------|
| Intrastat/Taric Code | 2103 |
|-----------------------------|------|

Manufacturer Comments

N/A

CONTACT INFORMATION

Address

Essential Cuisine Limited

Essential Cuisine Ltd

Browning Way

Winsford

Cheshire

CW7 2RH

United Kingdom

P: (Phone) 01606 541490

The information on the [Erudus System](#) has been supplied by the manufacturers of the products and, whilst the owners of the Erudus System take steps to ensure the information is regularly updated, they give no warranty and no guarantee that the information is accurate. Product information and ingredients may change, please always read product labels carefully in addition to using the information provided by Erudus.

We do not accept liability for any inaccuracies or incorrect information contained on this site.
Please visit <http://www.erudus.com/terms-and-conditions> for full terms and conditions.