

Changed Jul 04, 2024 13:52

Erudus ID c7fb4c77c08447b3a7469805390bce7d

Version 2.0

21162

GF Apricot Macaroon Slice (1 x 18)

Apricot Macaroon Slice 18x

PRODUCT DESCRIPTION

Individually wrapped. Crumbly shortbread base layered with a sticky, fruity apricot and sultana filling, finished with a toasted, coconut macaroon style topping. Wheat, gluten and milk-free. Suitable for vegetarians and coeliacs. Defrosted shelf-life = 21 days. (1 x 18)

Brand	Central Foods Group Ltd
Manufacturer Product Code	WLC0623
Product Type	Food
Product Category	Bakery - General
Storage Type	Frozen
Erudus ID	c7fb4c77c08447b3a7469805390bce7d
Specification Type	Legacy



Inner Component GTIN	5028931006231
Outer Case GTIN	05028931176231



INGREDIENTS

Ingredient Declaration


Apricot Filling (36%) (Apricot Jam (61%) (Glucose-fructose Syrup, Apricot Concentrate, Sugar, Gelling Agent (E440), Acidity Regulators (E330, E331), Preservative (E202), Flavouring), Dried Apricots (17%), Sultanas (14%), Gluten-free **OATS**, Water, Rice Flour, Sunflower Oil, Preservative (**SULPHUR DIOXIDE**)), Macaroon Topping (Desiccated Coconut (43%), **EGG**, Rapeseed Oil, Sugar, Rice Flour, Tapioca Starch, Rice Syrup, Concentrated Grape Juice, Raising Agents (E341, E500)), Shortbread Base (30%) (Rice Flour, Sugar, Palm Oil, Desiccated Coconut, Tapioca Starch, Water, Rapeseed Oil, Thickener (E415), Salt, Colour (E150a), Emulsifier (E471)).

ALLERGENS

Product Contains:

Celery/Celery	No	Mustard	No
Cereals Containing Gluten	Yes	Nuts (Tree)	May Contain
Barley	No	Almond nuts	May Contain
Oats	Yes	Brazil nuts	May Contain
Rye	No	Cashew nuts	May Contain
Wheat (including Spelt and Khorasan)	No	Hazelnuts	May Contain
Gluten content <20ppm	Yes	Macadamia (Queensland) nuts	No
Crustacea	No	Pecan nuts	May Contain
Eggs	Yes	Pistachio nuts	May Contain
Fish	No	Walnuts	May Contain
Lupin	No	Peanuts	No
Milk	No	Sesame Seeds	No
Molluscs	No	Soybeans	No
		Sulphur Dioxide and Sulphites	Yes

Risk Source:



RECEIVED
Thomas Ridley QC Dept.
8:47 am, 9 Jul 2024

The food information supplied by Thomas Ridley Foodservice has been provided by the respective product manufacturer. Whilst we use reasonable endeavours to check this information and ensure its accuracy, we do not give any warranty (whether express or implied), guarantee or representation that it is true, accurate or complete in any respect.

As product information, ingredients, nutritional guides and dietary or allergy advice may change from time to time, we recommend that you always carefully read the product label prior to using or consuming any such products. You should not solely rely upon the information we provide and make your own assessment as to the suitability or otherwise of any given product.



Additional Allergen Information

For allergens, see ingredients in CAPITALS.

SUPPLEMENTARY INGREDIENT INFORMATION

Palm Oil	Yes
Hydrogenated Vegetable Oil/Fat	No
GM Protein/DNA	No

ADDITIVES

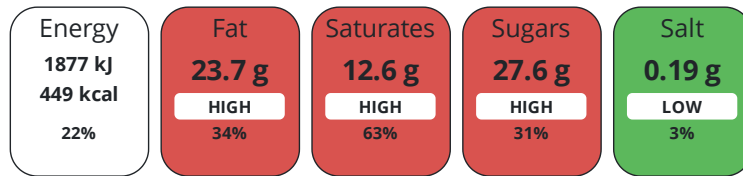
Product Contains:

Artificial Antioxidants	No	Artificial Flavourings	No
Artificial Colours	No	Artificial Preservatives	No
Artificial Flavour Enhancers	No	Artificial Sweeteners	No
Suitable for Coeliacs	Yes	Halal Diet	No
Kosher Diet	No	Vegetarian Diet	Suitable for
Vegan Diet	No		

DIET SUITABILITY

NUTRITIONAL INFORMATION

Each 100g/ml portion contains:



of your reference intake.

Typical values per 100g/ml : Energy 449kcal / 1877kJ

Nutrient	per 100g/ml	RI per 100g/ml	per 60g/ml serving	RI per 60g/ml serving
Energy (kJ)	1877 kJ	22%	1126.2 kJ	13%
Energy (kcal)	449 kcal	22%	269.4 kcal	13%
Fat	23.7 g	34%	14.2 g	20%
of which Saturates	12.6 g	63%	7.6 g	38%
Carbohydrate	52.3 g	20%	31.4 g	12%
of which Sugars	27.6 g	31%	16.6 g	18%
Fibre	5.9 g		3.5 g	
Protein	3.8 g	8%	2.3 g	5%
Salt	0.19 g	3%	0.1 g	2%
Sodium	76 mg		45.6 mg	

Serving Size 60 g

SUPPLEMENTARY NUTRITIONAL INFORMATION

HFSS (HIGH IN
FAT, SALT AND
SUGAR)

HANDLING &
STORAGE
INFORMATION

HFSS Status Yes

Directions For Use

From Frozen unless otherwise stated Defrost at room temperature for 6 hours. Once defrosted do not refreeze. Once defrosted, label each individual product with Best Before Date: Day of defrost +21 days.

Storage Instructions

Keep Frozen. Store at -18°C or below

Shelf Life from Time of Production 342 Days

ACCREDITATIONS/
CERTIFICATIONS/
ASSURANCE
SCHEMES
ORIGIN

BRCGS Certified

Other Accreditation

Roundtable of Sustainable Palm Oil (RSPO)

Product Country of Origin/Place of United Kingdom

Provenance

Additional Origin Details

United Kingdom

PRODUCT
CHARACTERISTICS

Standards Testing

Do you undertake trend analysis of No

Is shelf life testing undertaken? No

microbiological results?

Microbiological Standards

Organism	Description	Frequency	Target	Maximum	Sample (g or ml)
Bacillus Cereus (cfu/g or ml)		Quarterly	<1000	1000	-
E. Coli (cfu/g or ml)		Quarterly	<100	100	-
Enterobacteriaceae (cfu/g or ml)		Quarterly	<1000	1000	-
Listeria Monocytogenes (cfu/g or ml)	Not detected in 25g	Quarterly	=0	0	25
Staphylococcus Aureus (cfu/g or ml)		Quarterly	<100	100	-
Total Viable Count (TVC) (cfu/g or ml)		Quarterly	<5000	5000	-
Salmonella (cfu/g or ml)	Not detected in 25g	Quarterly	=0	0	25
Yeast (cfu/g or ml)		Quarterly	<1000	1000	-
Moulds (cfu/g or ml)		Quarterly	<1000	1000	-

CONFIGURATION

Case Configuration

Inner Pack Configuration

Total Quantity of Inner Components in 18 Units

Outer Case

Is the Outer Case Splittable? Yes

PRODUCT
WEIGHTS

Inner Component

Variable Weight Consumer Item No

Net Drained Weight 0 kg

Weight/Volume

N/A

Outer Case

Outer Case Gross Weight 1.21 kg

Outer Case Net Weight 1.08 kg

PRODUCT
DIMENSIONS

Inner Component

Inner Component Depth 0 mm

Inner Component Width 0 mm

Inner Component Height 0 mm

Outer Case

Outer Case Depth 270 mm

Outer Case Width 115 mm

Outer Case Height 90 mm

PALLET INFORMATION

Quantity of Cases Per Pallet Layer	30 Cases	Pallet Height	1.05 MTR
Quantity of Layers Per Pallet	10 Layers	Pallet Gross Weight	378 kg
Quantity of Cases Per Pallet	300 Cases		

PACKAGING

Inner Component Packaging

Type	Materials	Weight	Recycled Plastic %	Recyclable	Returnable	Composite
Paper/Polyethylene	Plastic	9 g	- %			
Paper/Polyethylene	Paper/Cardboard	121 g	- %			

Transport Packaging

Type	Materials	Weight	Recycled Plastic %	Recyclable	Returnable	Composite
Other	Plastic	280 g	- %		Yes	

OTHER INFORMATION CONTACT INFORMATION

Address

Central Foods Group Ltd
 Maple Court
 Ash Lane, Collingtree
 Collingtree
 Northants
 NN4 0NB
 England

P: (Phone) 01604 858 522

Complaints Contact

Karen Wright
 Customer Care Admin Assistant
 kwright@centralfoods.co.uk

P: (Phone) 01604 878 299

Technical Contact

Chris Stobart
 Technical Manager
 technical@centralfoods.co.uk

P: (Phone) 01604 878 276

Commercial Contact

Oliver Sampson
 Commercial Manager
 osampson@centralfoods.co.uk

P: (Phone) 07715 073 273

The information on the [Erudus System](#) has been supplied by the manufacturers of the products and, whilst the owners of the Erudus System take steps to ensure the information is regularly updated, they give no warranty and no guarantee that the information is accurate. Product information and ingredients may change, please always read product labels carefully in addition to using the information provided by Erudus.

We do not accept liability for any inaccuracies or incorrect information contained on this site.
 Please visit <http://www.erudus.com/terms-and-conditions> for full terms and conditions.